

8吨石材叉车零件目录

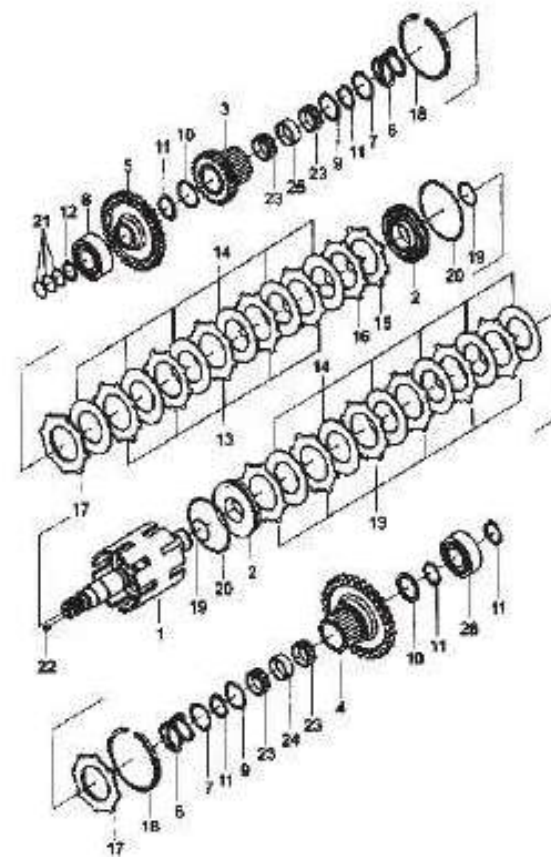
| | |
|--|----|
| 发动机安装/ENGINE | 3 |
| 空滤器安装/AIR CLEANER ASS'Y | 4 |
| 冷却系统/CLOOLING SYSTEM | 5 |
| 燃油系统/FUEL SYSTEM | 6 |
| 排气系统/EXHUAST SYSTEM | 7 |
| 变矩器冷却系统/TOR-CON OIL COOLING SYSTEM | 8 |
| 电气系统/ELECTRIC SYSTEM | 9 |
| 传动装置安装/DRIVE UNIT MOUNT | 10 |
| 停车制动器总成/PARKING BRAKE ASS'Y | 11 |
| 离合器I/HYDRAULIC CLUTCH I | 12 |
| 离合器II/HYDRAULIC CLUTCH II | 13 |
| 驱动桥/DRIVE AXLE | 14 |
| 减速器和差速器/REDUCTION & DIFERENTIAL | 16 |
| 驱动轮/DRIVE WHEEL | 18 |
| 变速操纵/CONTROL LINKAGE | 19 |
| 转向系统/STEERING SYSTEM | 21 |
| 护顶架/OVERHEAD GUARD | 22 |
| 转向桥/STEERING AXLE | 23 |
| 转向轮/SPEERING WHEEL | 25 |
| 转向油缸/STEERING CYLINDER | 26 |

8吨石材叉车零件目录

| | |
|--|----|
| 油门操纵/ACCELERATOR PEDAL | 27 |
| 行车制动与微动操纵/BRAKE & INCHING CONTROL | 28 |
| 行车制动管路系统/BRAKE PIPING SYSTEM | 30 |
| 标牌/DECAL | 31 |
| 停车制动/PARKING BRAKE HANDLE | 32 |
| 车架与平衡重/FRAME & COUNTER WEIGHT | 33 |
| 机罩、底板及座椅/HOOD FLOOR BOARD & SEAT | 34 |
| 密封及隔热垫/SEAL & INSULATOR | 36 |
| 液压油箱/OIL TANK | 37 |
| 阀操纵（二片）/VALVE CONTROL LINKAGE（TWO-THROW） | 38 |
| 阀操纵（三片）/VALVE CONTROL LINKAGE（THREE-THROW） | 39 |
| 阀操纵（四片）/VALVE CONTROL LINKAGE（FOUR-THROW） | 40 |
| 液压管路系统/HYDRAULIC SYSTEM | 41 |
| 门架管路系统/HYDRAULIC SYSTEM MAST | 44 |
| 货叉及货叉架/FORK & LIFT BRACKET | 46 |
| 门架/MAST | 47 |
| 起升油缸总成/LIFT CYLINDER ASS'Y | 49 |
| 倾斜油缸/TILT CYLINDER | 51 |

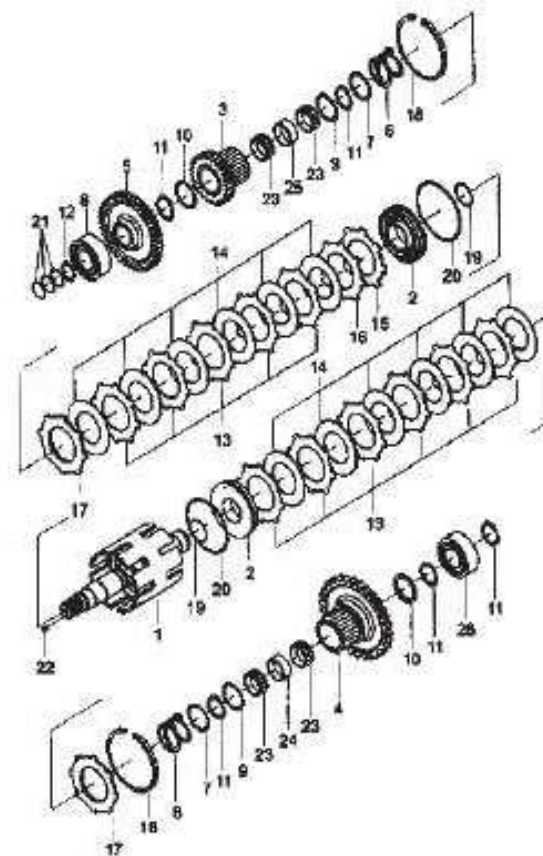
离合器/HYDRAULIC CLUTCH I

| 序号 No. | 图号 Part No. | 零部件名称 Description | 件数 Q'ty | 备注 Remark |
|-----------|----------------|----------------------|------------|--------------|
| 1 | FDA0YD-C4400 | Shaft ass'y | 轴总成 | 1 |
| 2 | FDA0YD-C4500 | Piston ass'y | 活塞总成 | 2 |
| 3 | FDA0YD-C4015 | Gear | 齿轮II | 1 |
| 4 | FDA0YD-C4016 | Gear | 齿轮I | 1 |
| 5 | FDA0YD-C4017 | Gear | 齿轮III | 1 |
| 6 | FDA0YD-C4018 | Spring | 弹簧 | 2 |
| 7 | FDA0YD-C4019 | Seat, spring | 弹簧座 | 2 |
| 8 | GB276-1994 | Bearing | 轴承309 | 1 |
| 9 | FDA0YD-C4021 | Ring, thrust | 止推环 | 2 |
| 10 | FDA0YD-C4022 | Ring, thrust | 止推环 | 2 |
| 11 | GB894.1-86 | Snap ring | 挡圈50 | 5 |
| 12 | GB894.1-86 | Snap ring | 挡圈45 | 1 |
| 13 | FDA0YD-C4023 | Plate,separator | 隔片 | 13 |
| 14 | FDA0YD-C4600 | Plate,friction ass'y | 摩擦片总成 | 14 |
| 15 | FDA0YD-C4024 | Plate | 蝶形板 | 1 |
| 16 | FDA0YD-C4025 | Plate | 压板 | 1 |
| 17 | FDA0YD-C4026 | Plate, end | 端板 | 2 |
| 18 | FDA0YD-C4027 | Snap ring | 卡环 | 2 |
| 19 | FDA0YD-C4028 | Ring | 密封环 | 2 |
| 20 | FDA0YD-C4029 | Ring | 密封环 | 2 |
| 21 | FDA0YD-C4031 | Ring | 密封环 | 3 |
| 22 | FDA0YD-C4032 | Plug | 螺塞 | 2 |
| 23 | FDA0YD-C4033 | Bearing, needle | 滚针轴承 | 4 |
| 24 | FDA0YD-C4034 | Spacer | 隔圈 | 1 |
| 25 | FDA0YD-C4035 | Spacer | 隔圈 | 1 |
| 26 | GB276-1994 | Bearing | 轴承210 | 1 |



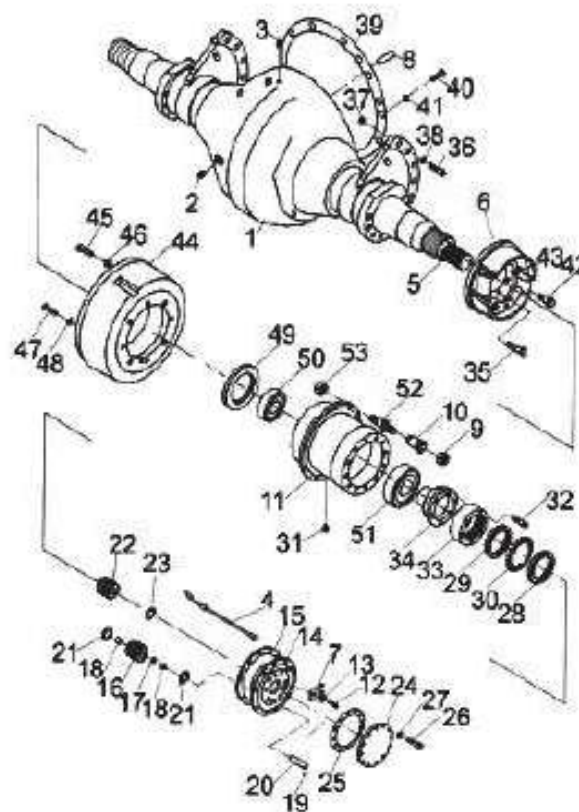
离合器II/HYDRAULIC CLUTCH II

| 序号 No. | 图号 Part No. | 零部件名称 Description | 件数 Q'ty | 备注 Remark |
|-----------|----------------|----------------------|------------|--------------|
| 1 | FDA0YD-C4400 | Shaft ass'y | 轴总成 | 1 |
| 2 | FDA0YD-C4500 | Piston ass'y | 活塞总成 | 2 |
| 3 | FDA0YD-C4015 | Gear | 齿轮II | 1 |
| 4 | FDA0YD-C4016 | Gear | 齿轮I | 1 |
| 5 | FDA0YD-C4036 | Gear | 齿轮IV | 1 |
| 6 | FDA0YD-C4018 | Spring | 弹簧 | 2 |
| 7 | FDA0YD-C4019 | Seat, spring | 弹簧座 | 2 |
| 8 | GB276-1994 | Bearing | 轴承309 | 1 |
| 9 | FDA0YD-C4021 | Ring, thrust | 止推环 | 2 |
| 10 | FDA0YD-C4022 | Ring, thrust | 止推环 | 2 |
| 11 | GB894.1-86 | Snap ring | 挡圈50 | 5 |
| 12 | GB894.1-86 | Snap ring | 挡圈45 | 1 |
| 13 | FDA0YD-C4023 | Plate,separator | 隔片 | 13 |
| 14 | FDA0YD-C4600 | Plate,friction ass'y | 摩擦片总成 | 14 |
| 15 | FDA0YD-C4024 | Plate | 蝶形板 | 1 |
| 16 | FDA0YD-C4025 | Plate | 压板 | 1 |
| 17 | FDA0YD-C4026 | Plate, end | 端板 | 2 |
| 18 | FDA0YD-C4027 | Snap ring | 卡环 | 2 |
| 19 | FDA0YD-C4028 | Ring | 密封环 | 2 |
| 20 | FDA0YD-C4029 | Ring | 密封环 | 2 |
| 21 | FDA0YD-C4031 | Ring | 密封环 | 3 |
| 22 | FDA0YD-C4032 | Plug | 螺塞 | 2 |
| 23 | FDA0YD-C4033 | Bearing, needle | 滚针轴承 | 4 |
| 24 | FDA0YD-C4034 | Spacer | 隔圈 | 1 |
| 25 | FDA0YD-C4035 | Spacer | 隔圈 | 1 |
| 26 | GB276-1994 | Bearing | 轴承210 | 1 |



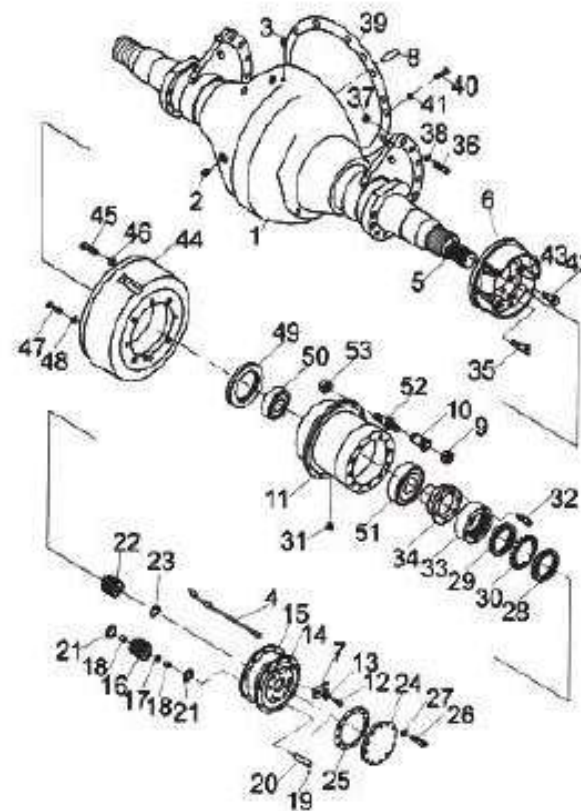
驱动桥/DRIVE AXLE

| 序号 No. | 图号 Part No. | 零部件名称 Description | 件数 Q'ty | 备注 Remark |
|-----------|----------------|-----------------------|------------|---------------|
| 1 | FD70HD-C1100 | Housing axil | 1 | 驱动桥壳总成 |
| 2 | FD70HD-C1001 | Plug, drain | 2 | 桥壳螺塞 |
| 3 | FD70HD-C1200 | Breather | 1 | 通气塞总成 |
| 4 | FD70HD-C1002 | Pipe | 2 | 充气接管 |
| 5 | FD70HD-C1003 | Shaft, axle | 2 | 半轴 |
| 6 | FD70HD-C1300 | Wheel brake ass'y L.H | 1 | 制动器总成(左) |
| 7 | FD70HD-C1400 | Wheel brake ass'y R.H | 1 | 制动器总成(右) |
| 8 | GB119-86 | Pin | 2 | 销 |
| 9 | FD70HD-C1005 | Nut, hub outer | 20 | 外螺母 |
| 10 | FD70HD-C1006 | Nut, hub inner | 20 | 内螺母 |
| 11 | FD70HD-C1007 | Hub | 2 | 轮毂 |
| 12 | FD70HD-C1008 | Bolt | 20 | 螺栓 |
| 13 | GB93-87 | Rubber washer | 20 | 垫圈14 |
| 14 | FD70HD-C1009 | Carrier, planet | 2 | 行星架 |
| 15 | FD70HD-C1011 | Packing | 2 | 纸垫 |
| 16 | FD70HD-C1012 | Gear, planet | 6 | 行星齿轮 |
| 17 | FD70HD-C1013 | Spacer | 6 | 滚子隔垫 |
| 18 | GB305-77 | Needle | 348 | 滚针4X21.8l |
| 19 | GB308-77 | Boll, steel | 6 | 钢球Φ9.5 |
| 20 | FD70HD-C1014 | Shaft, Planet gear | 6 | 行星齿轮轴 |
| 21 | FD70HD-C1015 | Washer, thrust | 12 | 止推垫片 |
| 22 | FD70HD-C1016 | Gear, sun | 2 | 太阳齿轮 |
| 23 | FD70HD-C1017 | Ring | 2 | 轴向卡环 |
| 24 | FD70HD-C1500 | Cap, axle shaft | 2 | 半轴端盖总成 |
| 25 | FD70HD-C1018 | Gasket | 2 | 端盖纸垫 |
| 26 | GB5786-2000 | Bolt | 12 | 螺栓M12X1.25X30 |
| 27 | GB93-87 | Washer, lock | 12 | 垫圈12 |
| 28 | FD70HD-C1019 | Lock nut, outer | 2 | 锁紧螺母(外)M7.5X2 |
| 29 | FD70HD-C1021 | Lock nut, inner | 2 | 锁紧螺母(内)M7.5X2 |



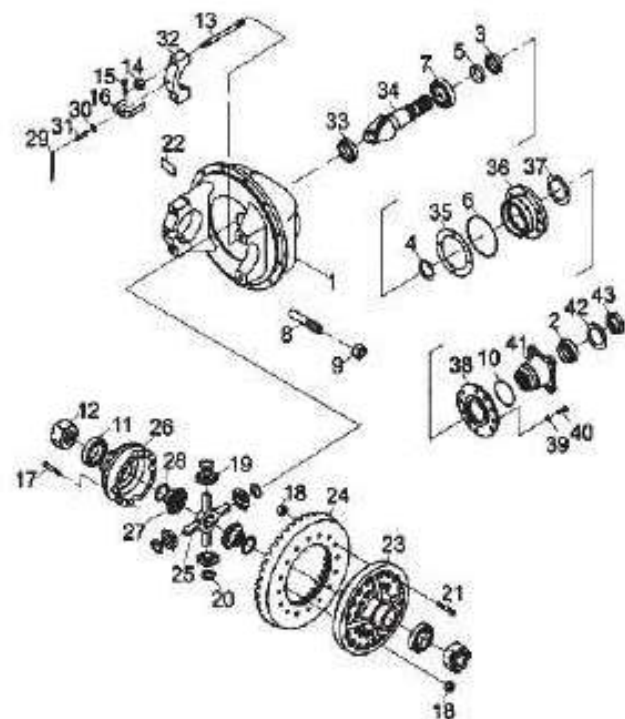
驱动桥/DRIVE AXLE

| 序号 No. | 图号 Part No. | 零部件名称 Description | 件数 Q'ty | 备注 Remark |
|-----------|----------------|------------------------|---------------|--------------|
| 30 | FD70HD-C1022 | Washer, lock | 防松垫圈 | 12 |
| 31 | FD70HD-C1023 | Plug | 堵塞 | 4 |
| 32 | FD70HD-C1024 | Bolt | 内齿圈螺栓 | 16 |
| 33 | FD70HD-C1025 | Gear, internal | 内齿圈 | 2 |
| 34 | FD70HD-C1026 | Gear, internal seat | 内齿圈座 | 2 |
| 35 | GB5786-2000 | Bolt | 螺栓M12X1.25X25 | 12 |
| 36 | GB5786-2000 | Bolt | 螺栓M24X2X70 | 12 |
| 37 | GB6171-2000 | Nut | 螺母M24X2 | 12 |
| 38 | FD70HD-C1027 | Washer, lock | 垫圈 | 12 |
| 39 | FD70HD-C1028 | Packing | 纸垫 | 1 |
| 40 | GB5786-2000 | Bolt | 螺栓M14X1.25X40 | 14 |
| 41 | GB93-87 | Washer, lock | 垫圈14 | 14 |
| 42 | GB5785-2000 | Bolt | 螺栓M12X1.25X40 | 24 |
| 43 | FD70HD-C1029 | Pin | 销 | 4 |
| 44 | FD70HD-C1031 | Drum | 制动鼓 | 2 |
| 45 | FD70HD-C1032 | Bolt, reamer | 铰制螺栓 | 4 |
| 46 | FD70HD-C1033 | Washer | 垫圈 | 4 |
| 47 | FD70HD-C1034 | Bolt | 螺栓 | 20 |
| 48 | FD70HD-C1035 | Washer, conical spring | 锥形垫圈 | 20 |
| 49 | FD70HD-C1036 | Seal, oil | 油封 | 2 |
| 50 | FD70HD-C1037 | Bearing, taper roller | 小轴承 | 2 |
| 51 | FD70HD-C1038 | Bearing, taper roller | 大轴承 | 2 |
| 52 | FD70HD-C1039 | Bolt, hub | 轮毂螺栓 | 20 |
| 53 | GB6171-2000 | Nut, hub | 轮毂螺母M20X1.5 | 20 |
| | | | | |
| | | | | |
| | | | | |
| | | | | |
| | | | | |



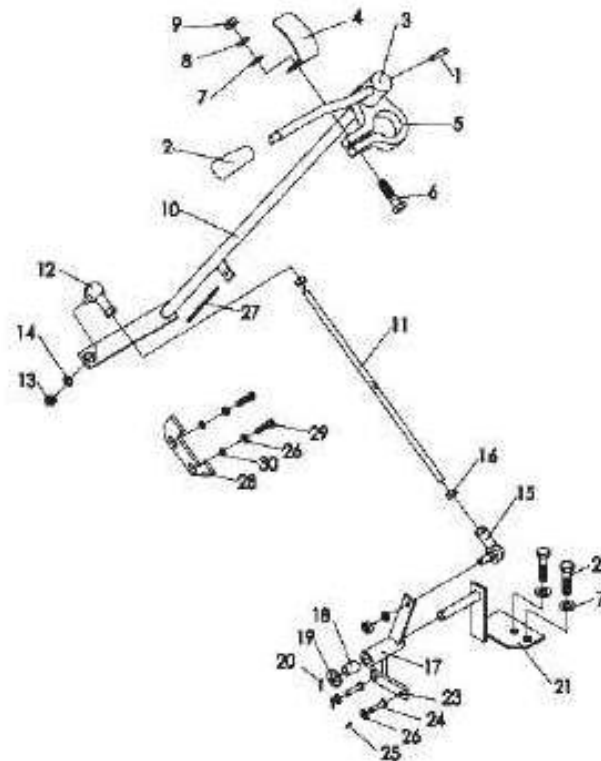
减速器和差速器/REDUCTION & DIFERENTIAL

| 序号 No. | 图号 Part No. | 零部件名称 Description | 件数 Q'ty | 备注 Remark |
|-----------|----------------|----------------------|------------|----------------|
| 1 | FD70HD-C1600 | Carrier | 1 | 主传动器壳体 |
| 2 | FD70HD-C1041 | Oil seal | 1 | 油封SG70X95X12 |
| 3 | FD70HD-C1042 | Bearing | 1 | 小轴承 |
| 4 | FD70HD-C1043 | Washer, thrust | 1 | 调整垫片 按需 |
| 5 | FD70HD-C1044 | Piece distance | 1 | 隔块 |
| 6 | GB1235-76 | Snap ring | 1 | O型固定密封圈140X3.1 |
| 7 | FD70HD-C1045 | Bearing | 1 | 大轴承 |
| 8 | FD70HD-C1046 | Bolt ass'y | 1 | 调整螺柱总成 |
| 9 | GB6173-2000 | Nut | 1 | 螺母M22X1.5 |
| 10 | GB1235-76 | O-ring | 1 | O型圈40.64X5.34 |
| 11 | GB297-64 | bearing | 2 | 轴承7514 |
| 12 | FD70HD-C1047 | Nut | 2 | 调整螺母 |
| 13 | FD70HD-C1048 | Bolt | 4 | 盖用双头螺栓 |
| 14 | FD70HD-C1049 | Nut | 4 | 螺母 |
| 15 | GB91-2000 | Pin cotter | 4 | 开口销Φ4X40 |
| 16 | FD70HD-C1051 | Lock adjuster | 2 | 锁片 |
| 17 | FD70HD-C1052 | Bolt | 8 | 螺栓 |
| 18 | GB6176-2000 | Nut | 20 | 螺母M14X1.5 |
| 19 | FD70HD-C1053 | Gear, planet | 4 | 行星齿轮 |
| 20 | FD70HD-C1054 | Washer, thrust | 4 | 推力垫片 |
| 21 | FD70HD-C1055 | Bolt | 12 | 螺栓 |
| 22 | FD70HD-C1056 | Snap ring, spring | 1 | 轴用弹簧挡圈 |
| 23 | FD70HD-C1057 | Case, L.H.cross | 1 | 差速器左壳体 |
| 24 | FD70HD-C1058 | Gear | 1 | 大螺伞齿轮 |
| 25 | FD70HD-C1059 | Spider | 1 | 十字轴 |
| 26 | FD70HD-C1061 | Case, R.H.cross | 1 | 差速器右壳体壳体 |
| 27 | FD70HD-C1062 | Gear side | 2 | 半轴齿轮 |
| 28 | FD70HD-C1063 | Washer, adjuster | 1 | 调整垫片 按需 |
| 29 | FD70HD-C1064 | Steel wire | 2 | 钢丝10X100 |



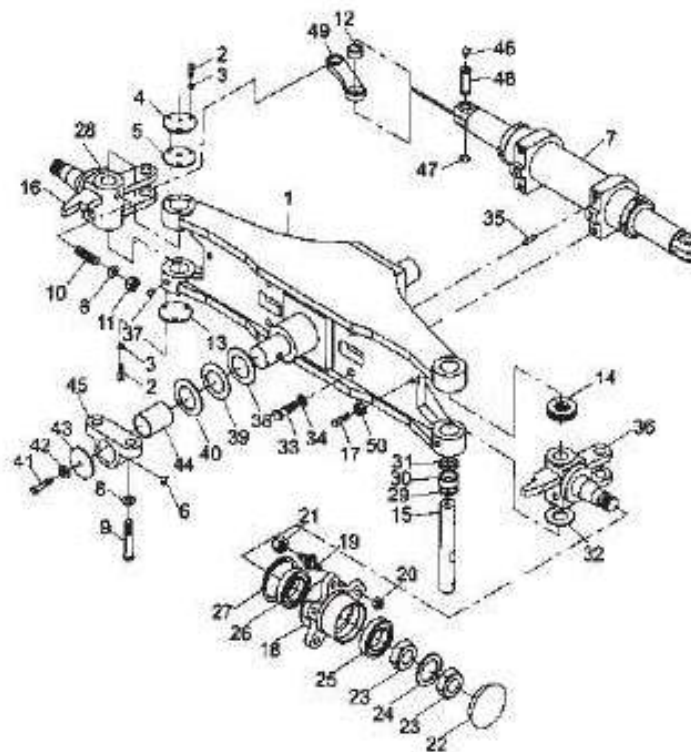
变速操纵/CONTROL LINKAGE

| 序号 No. | 图号 Part No. | 零部件名称 Description | 件数 Q'ty | 备注 Remark |
|-----------|----------------|---------------------------|------------|--------------|
| 1 | GB879.1-20001 | Pin 弹性圆柱销6×30 | 1 | |
| 2 | FD70HD-L4100 | Knob 变速杆手柄套 | 1 | |
| 3 | FD70HD-L4200 | Lever 变速杆总成 | 1 | |
| 4 | FD70HD-L4300 | Bracket 标牌支架 | 1 | |
| 5 | FD70HD-L4001 | Bracket 轴座 | 1 | |
| 6 | GB5782-2000 | Bolt 螺栓 M10×40 | 1 | |
| 7 | GB97.1-2002 | Washer 垫圈10 | 3 | |
| 8 | GB93-87 | Washer,lock 垫圈10 | 5 | |
| 9 | GB6170-2000 | Nut 螺母 M10 | 1 | |
| 10 | FD70HD-L4400 | Shaft 转轴 | 1 | |
| 11 | FD70HD-L4002 | Link 杆 | 1 | |
| 12 | FD70HD-L4003 | Bushing 弯杆型球头轴承 I | 1 | |
| 13 | GB6170-2000 | Nut 螺母M8 | 3 | |
| 14 | GB93-87 | Washer,lock 垫圈8 | 2 | |
| 15 | FD70HD-L4004 | Bushing 弯杆型球头轴承 II | 1 | |
| 16 | GB6170-2000 | Nut 螺母 M8 (左旋) | 1 | |
| 17 | FD70HD-L4500 | Rocking arm 摇臂 | 1 | |
| 18 | SF-1-1220 | Bushing 钢背轴承 1220 | 1 | |
| 19 | GB97.1-2002 | Washer 垫圈12 | 1 | |
| 20 | GB91-2000 | Pin, cotter 开口销 3.2X26 | 1 | |
| 21 | FD70HD-L4600 | Bracket 支架 | 1 | |
| 22 | GB5786-2000 | Bolt 螺栓 M10×1.25X20 | 2 | |
| 23 | FD70HD-L4005 | Link 连杆 | 2 | |
| 24 | GB882-2000 | Pin 销 B6X26 | 2 | |
| 25 | GB91-2000 | Pin, cotter 开口销 1.6X10 | 2 | |
| 26 | GB97.1-2002 | Washer 垫圈6 | 4 | |
| 27 | FD70HD-L4006 | Spring 拉簧 | 1 | |
| 28 | FD70HD-L4007 | Valve retainer 限位板 | 1 | |
| 29 | GB5782-2000 | Bolt 螺栓 M6X25 | 2 | |



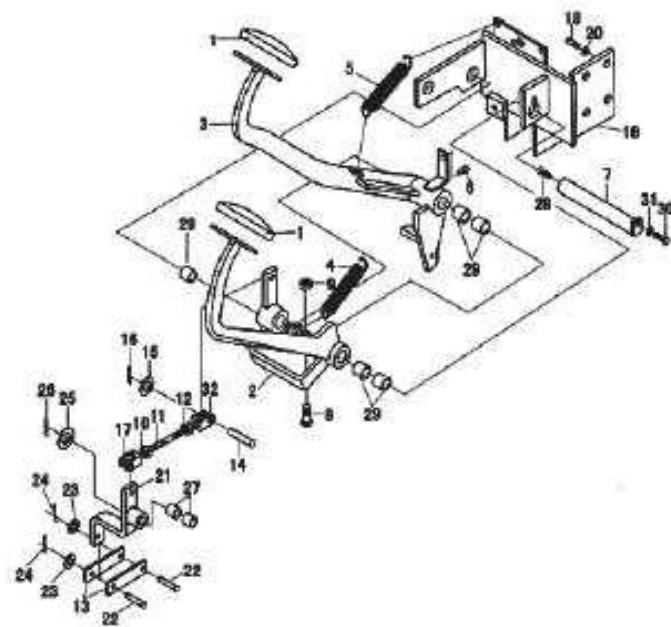
转向桥/STEERING AXLE

| 序号 No. | 图号 Part No. | 零部件名称 Description | 件数 Q'ty | 备注 Remark |
|-----------|----------------|----------------------|------------|---------------|
| 1 | FD70HD-B1100 | Axle | 1 | 转向桥体 |
| 2 | GB5782-2000 | Bolt | 8 | 螺栓M8X16 |
| 3 | GB93-87 | Washer,lock | 8 | 垫圈8 |
| 4 | FD70HD-B1001 | Cap,king pin | 2 | 主销盖 |
| 5 | FD70HD-B1002 | Washer | 2 | 密封垫片 |
| 6 | FD70HD-B1003 | Fitting,grease | 2 | 弯颈式滑脂嘴 |
| 7 | FD70HD-B1200 | Power cylinder | 1 | 转向油缸 |
| 8 | GB93-87 | Washer,lock | 8 | 垫圈16 |
| 9 | GB5785-2000 | Bolt | 8 | 螺栓M16X1.5X60 |
| 10 | FD70HD-B1004 | Pin,lock | 2 | 锁紧销 |
| 11 | GB97.1-2002 | Washer | 2 | 垫圈10 |
| 12 | GB93-87 | Washer,lock | 2 | 垫圈10 |
| 13 | GB6173-2000 | Nut | 2 | 螺母M10X1.25 |
| 14 | FD70HD-B1005 | Bearing | 2 | 止推轴承 |
| 15 | FD70HD-B1006 | Pin, king | 2 | 转向节主销销 |
| 16 | GB9459-88 | Nut | 2 | 槽型螺母M30X2 |
| 17 | GB91-2000 | Pin,cotter | 2 | 开口销6X550 |
| 18 | FD70HD-B1200 | Hub | 2 | 轮毂 |
| 19 | FD70HD-B1007 | Bolt, hub | 12 | 轮毂螺栓 |
| 20 | FD70HD-B1008 | Nut, hub | 12 | 轮毂螺母 |
| 21 | GB6173-2000 | Nut | 12 | 螺母M20X1.5 |
| 22 | FD70HD-B1009 | Cap, hub | 2 | 轮毂盖 |
| 23 | GB812-88 | Nut | 4 | 螺母M55X2 |
| 24 | GB858-88 | Washer | 2 | 垫圈55 |
| 25 | GB297-1994 | Bearing | 2 | 轴承7511E |
| 26 | GB297-1994 | Bearing | 2 | 轴承7515E |
| 27 | GB9877.1-88 | Seal, oil | 2 | 油封B95X130X12D |
| 28 | FD70HD-B1300 | Knuckle,R.H. | 1 | 右转向节总成 |
| 29 | FD70HD-B1011 | Seal, oil | 4 | 油封 |



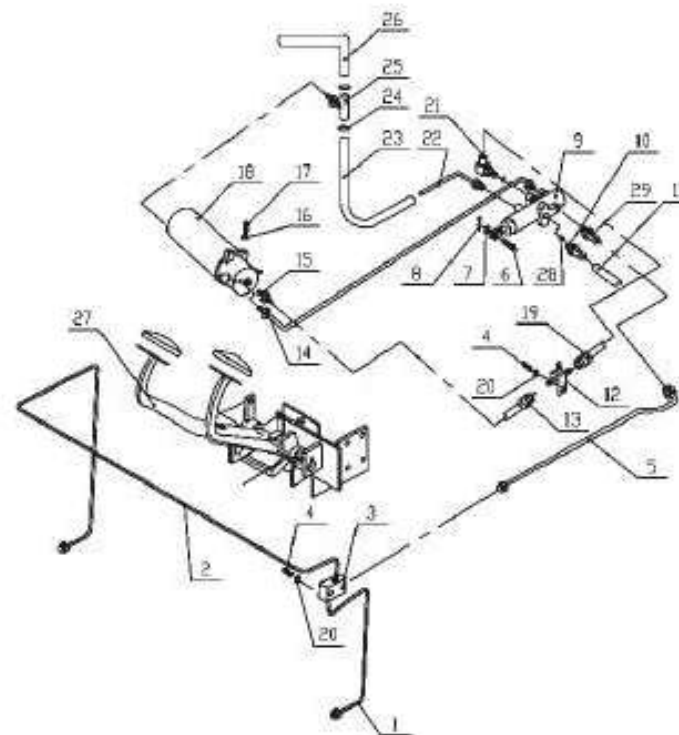
行车制动与微动操纵/BRAKE & INCHING CONTROL

| 序号 No. | 图号 Part No. | 零部件名称 Description | 件数 Q'ty | 备注 Remark |
|-----------|----------------|----------------------|------------|--------------|
| 1 | FD70HD-L1701 | Cover, pedal | 2 | 踏板垫 |
| 2 | FD70HD-L1710 | Pedal, inching | 1 | 微动踏板总成 |
| 3 | FDA0YD-L3620 | pedal, brake | 1 | 制动踏板总成 |
| 4 | FD70HD-L1702 | Spring | 1 | 微动拉簧 |
| 5 | FD70HD-L1703 | Spring | 1 | 制动拉簧 |
| 6 | FD70HD-L1704 | Rubber | 1 | 橡皮顶轴 |
| 7 | FD70HD-L1705 | Shaft, oil | 1 | 油轴 |
| 8 | GB5781-2000 | Bolt | 3 | 螺栓M10X40 |
| 9 | GB6170-2000 | Nut | 3 | 螺母M10 |
| 10 | GB6170-2000 | Nut(L.H.) | 1 | 左旋螺母M8 |
| 11 | FD70HD-L1706 | Rod | 1 | 丝杆 |
| 12 | GB6170-2000 | Nut | 1 | 螺母M8 |
| 13 | FD70HD-L1707 | Link | 2 | 连杆 |
| 14 | GB882-2000 | Pin | 2 | 销轴Φ6X25 |
| 15 | GB95-2002 | Washer | 2 | 平垫圈6 |
| 16 | GB91-2000 | Pin,cotter | 2 | 开口销1.6X16 |
| 17 | FD70HD-L1708 | Clevis L.H. | 1 | 支耳(左) |
| 18 | FD70HD-L1709 | Bracket | 1 | 托架 |
| 19 | GB5783-2000 | Bolt | 4 | 螺栓M12X20 |
| 20 | GB93-87 | Washer,lock | 4 | 垫圈12 |
| 21 | FD70HD-L1711 | Link | 1 | 连杆 |
| 22 | GB882-2000 | Pin | 3 | 销轴Φ10X30 |
| 23 | GB95-2002 | Washer | 3 | 平垫圈10 |
| 24 | GB91-2000 | Pin,cotter | 3 | 开口销3.2X20 |
| 25 | GB95-2002 | Washer | 1 | 平垫圈16 |
| 26 | GB91-2000 | Pin,cotter | 1 | 开口销3.2X26 |
| 27 | SF-1-1612 | Bushing | 2 | 钢背轴承1612 |
| 28 | FD70HD-L1712 | Fitting grease | 1 | 直通式滑脂嘴7/8" |
| 29 | SF-1-2525 | Bushing | 1 | 钢背轴承2525 |



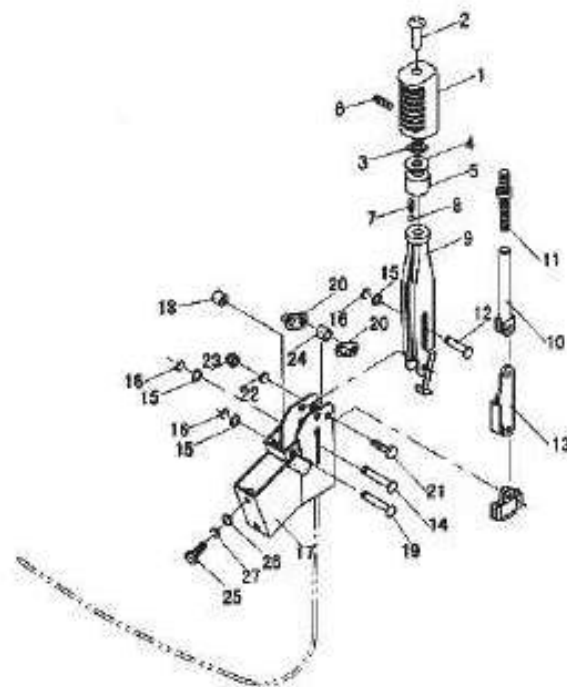
行车制动管路系统/BRAKE PIPING SYSTEM

| 序号 No. | 图号 Part No. | 零部件名称 Description | 件数 Q'ty | 备注 Remark |
|-----------|-----------------|----------------------------|------------|--------------|
| 1 | FD70HD-L5100 | Pipe ass'y 制动钢管1 | 1 | |
| 2 | FD70HD-L5200 | Pipe ass'y 制动钢管2 | 1 | |
| 3 | FDA0YD-L1002 | Three way 三通接头 | 1 | |
| 4 | GB/T5786-2000 | Bolt 螺栓M10X1.25X30 | 2 | |
| 5 | FDA0YD-L1300 | Pipe ass'y 油管总成 | 1 | |
| 6 | GB/T882-2000 | Pin 销轴B10X28 | 1 | |
| 7 | GB/T97.1-2002 | Washer 垫圈10 | 1 | |
| 8 | GB/T91-2000 | Pin, cotter 开口销3.2X20 | 1 | |
| 9 | OBV-L25E | Brake valve 动力制动阀 | 1 | |
| 10 | FDA0YD-L1003 | Connector 接头 | 1 | |
| 11 | FDA0YD-L1004 | Hose 回油管 ϕ 13X950 | 1 | |
| 12 | GJT-062-00 | Three way 三通接头 | 1 | |
| 13 | TGLBI-06090 | Hose H.P. 高压胶管 | 1 | |
| 14 | FDA0YD-L1400 | Pipe ass'y 油管 | 1 | |
| 15 | FDA0YD-L1005 | Connector 直通接头 | 1 | |
| 16 | GB/T97.1-2002 | Washer 垫圈8 | 2 | |
| 17 | GB/T5783-2000 | Bolt 螺栓M8X20 | 2 | |
| 18 | HXQa | Reserve 蓄能器 | 1 | |
| 19 | TGLBI-06120 | Hose H.P. 高压胶管 | 1 | |
| 20 | GB/T93-87 | Washer, lock 垫圈10 | 6 | |
| 21 | FDA0YD-L1006 | Joint 直角接头 | 1 | |
| 22 | FDA0YD-L1500 | Pipe ass'y 弯管总成 | 1 | |
| 23 | FDA0YD-L1007 | Hose 输油管 ϕ 6X410 | 1 | |
| 24 | JB/T8870-1999 | Clip 双钢丝卡箍 ϕ 18 | 4 | |
| 25 | GJT-063-00 | Three way 三通总成 | 1 | |
| 26 | FDA0YD-L1008 | Hose 输油管 ϕ 10X1200 | 1 | |
| 27 | FD70HD-L5300 | Foot brake ass'y 脚制动总成 | 1 | |
| 28 | GB/T3452.1-2005 | O-ring O型圈15.8X2.4 | 1 | |
| 29 | FDA0YD-L1700 | Safety valve 安全阀 | 1 | |



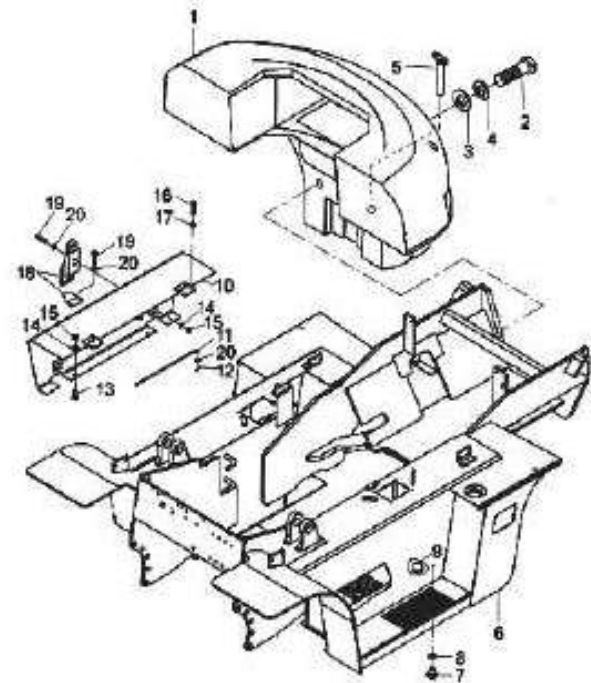
停车制动/PARKING BRAKE HANDLE

| 序号 No. | 图号 Part No. | 零部件名称 Description | 件数 Q'ty | 备注 Remark |
|-----------|----------------|----------------------|---------------|--------------|
| 1 | FDA0YD-L2001 | Grip | 手柄头 | 1 |
| 2 | FDA0YD-L2002 | Adjust rod | 调节杆 | 1 |
| 3 | GB39-88 | Nut | 方螺母M8 | 1 |
| 4 | GB96.1-2002 | Washer | 大垫圈8 | 1 |
| 5 | FDA0YD-L2003 | Seat | 手柄座 | 1 |
| 6 | GB80-85 | Screw | 内六角紧定螺钉M4X4 | 1 |
| 7 | FDA0YD-L2004 | Spring | 弹簧 | 1 |
| 8 | GB304-64 | Ball | 钢球Φ6 | 1 |
| 9 | FDA0YD-L2005 | Lever | 闸把体 | 1 |
| 10 | FDA0YD-L2006 | Rod | 拉杆体 | 1 |
| 11 | FDA0YD-L2007 | Screw rod | 螺杆 | 1 |
| 12 | FDA0YD-L2008 | Pin | 平头销d8X35 | 1 |
| 13 | FDA0YD-L2009 | Link | 拉板总成 | 1 |
| 14 | FDA0YD-L2011 | Pin | 平头销d8X45 | 1 |
| 15 | GB97.1-2002 | Washer | 垫圈8 | 2 |
| 16 | GB896-86 | Snap ring | 开口挡圈6 | 2 |
| 17 | FDA0YD-L2100 | Bracket | 支架总成 | 1 |
| 18 | FDA0YD-L2012 | Plate | 缓冲垫圈 | 1 |
| 19 | FDA0YD-L2013 | Pin | 销轴 | 1 |
| 20 | FDA0YD-L2200 | Plate | 支撑板总成 | 2 |
| 21 | GB5782-2000 | Bolt | 螺栓M10X45 | 1 |
| 22 | GB93-87 | Washer,lock | 垫圈10 | 1 |
| 23 | GB802-86 | Nut | 组合式盖形螺母M10 | 1 |
| 24 | FDA0YD-L2014 | Washer | 垫圈II | 1 |
| 25 | GB5786-2000 | Bolt | 螺栓M10X1.25X25 | 2 |
| 26 | GB97.1-2002 | Washer | 垫圈10 | 2 |
| 27 | GB93-87 | Washer,lock | 垫圈10 | 2 |



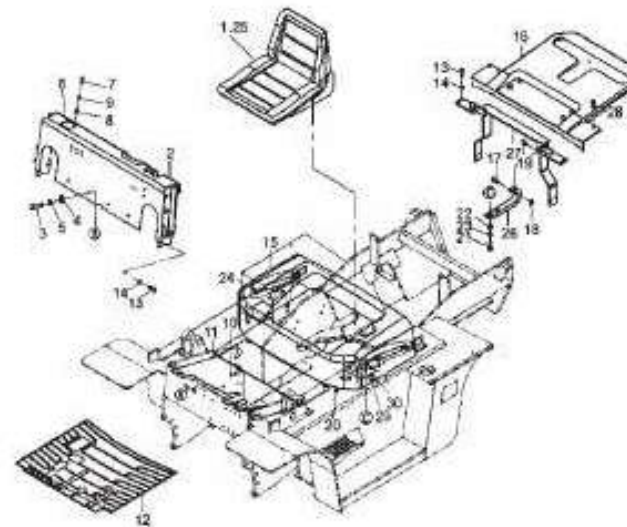
车架与平衡重/FRAME & COUNTER WEIGHT

| 序号 No. | 图号 Part No. | 零部件名称 Description | 件数 Q'ty | 备注 Remark |
|-----------|----------------|------------------------|------------|--------------|
| 1 | FD80HDS-A4001 | Counter weight 平衡重 | 1 | |
| 2 | GB5782-2000 | Bolt 螺栓M36X300 | 2 | |
| 3 | FDA0YD-A0007 | Washer 垫圈 | 2 | |
| 4 | GB93-87 | Washer,lock 垫圈36 | 2 | |
| 5 | FD70HD-A8100 | Pin,drag 牵引销 | 1 | |
| 6 | FD80HDS-A1000 | Fram 车架 | 1 | |
| 7 | FD30MA-D1007 | Plug,drain 放油螺塞 | 1 | |
| 8 | JB982-1977 | Washer 垫圈20 | 2 | |
| 9 | FD30MA-A0001 | Magnet 磁铁Φ68/Φ37X14 | 2 | |
| 10 | FDA0YD-A3000 | Cover ass'y 电瓶罩总成 | 1 | |
| 11 | FDA0YD-A3200 | Rod 撑杆 | 1 | |
| 12 | GB91-2000 | Pin,cotter 销2X20 | 1 | |
| 13 | FDA0YD-A3002 | Rubber 胶垫 | 2 | |
| 14 | GB93-87 | Washer,lock 垫圈6 | 2 | |
| 15 | GB6170-2000 | Nut 螺母M6 | 6 | |
| 16 | GB5781-2000 | Bolt 螺栓M8X16 | 4 | |
| 17 | GB93-87 | Washer,lock 垫圈8 | 4 | |
| 18 | FDA0YD-A3300 | Catch 搭扣 | 2 | |
| 19 | GB5783-2000 | Bolt 螺栓M8X16 | 8 | |
| 20 | GB97.1-2002 | Washer 垫圈8 | 8 | |
| | | | | |
| | | | | |
| | | | | |
| | | | | |
| | | | | |
| | | | | |
| | | | | |
| | | | | |
| | | | | |
| | | | | |
| | | | | |
| | | | | |
| | | | | |



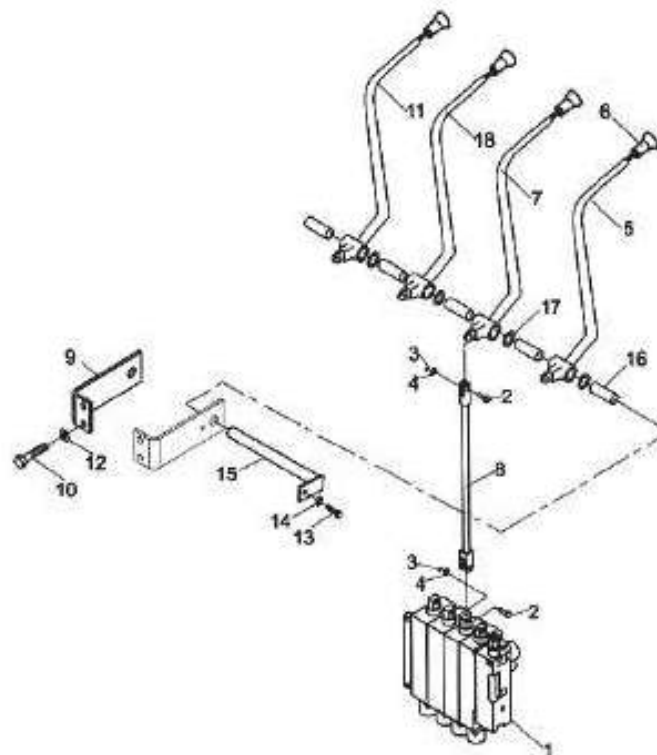
机罩、底板及座椅/HOOD FLOOR BOARD & SEAT

| 序号 No. | 图号 Part No. | 零部件名称 Description | 件数 Q'ty | 备注 Remark |
|-----------|----------------|----------------------|-----------------|--------------|
| 1 | FD30MA-A7500 | Seat | 座椅总成 | 1 |
| 2 | FD70HD-A1100 | Cabinet | 仪表架 | 1 |
| 3 | GB5786-2000 | Bolt | 螺栓M10X1.25X20 | 4 |
| 4 | GB97.1-2002 | Washer | 垫圈10 | 4 |
| 5 | GB93-87 | Washer,lock | 垫圈10 | 8 |
| 6 | FD30MA-A7003 | Box | 工具箱 | 1 |
| 7 | GB818-2000 | Screw | 螺钉M6X16 | 2 |
| 8 | GB97.1-2002 | Washer | 垫圈6 | 3 |
| 9 | GB93-87 | Washer,lock | 垫圈6 | 2 |
| 10 | FD70HD-A3000 | Floor board,rear | 后底板总成 | 1 |
| 11 | FD70HD-A2000 | Floor board,front | 前底板总成 | 1 |
| 12 | FD70HD-A0001 | Gasket | 底板垫 | 1 |
| 13 | GB5786-2000 | Bolt | 螺栓M12X1.25X25 | 4 |
| 14 | GB93-87 | Washer,lock | 垫圈12 | 4 |
| 15 | FD70HD-A4000 | Bonnet | 机罩总成 | 1 |
| 16 | FD70HD-A7000 | Cover | 水箱盖板总成 | 1 |
| 17 | GB882-2000 | Pin | 销轴B10X48 | 2 |
| 18 | GB91-2000 | Pin,cotter | 销3.2X20 | 2 |
| 19 | SF-1-1020 | Bushing | 钢背轴承1020 | 2 |
| 20 | FDA0YD-A6001 | Rubber,cushion | 缓冲胶垫 | 2 |
| 21 | GB5786-2000 | Bolt | 螺栓M8X16 | 10 |
| 22 | GB97.1-2002 | Washer | 垫圈8 | 6 |
| 23 | GB93-87 | Washer,lock | 垫圈8 | 14 |
| 24 | FD70HD-A9000 | Shock,absorber | 气弹簧QC20-245-735 | 2 |
| 25 | FDA0YD-A7510 | Safety belt | 安全带 | 1 |
| 26 | FDA0YD-A6002 | Hinge | 铰链 | 2 |
| 27 | FD70HD-A5000 | Bracket,ass'y | 横梁总成 | 1 |
| 28 | FD70HD-A0004 | Screw | 滚花螺钉 | 5 |
| 29 | FDA0YD-A3300 | Articulation | 增孔 | 2 |



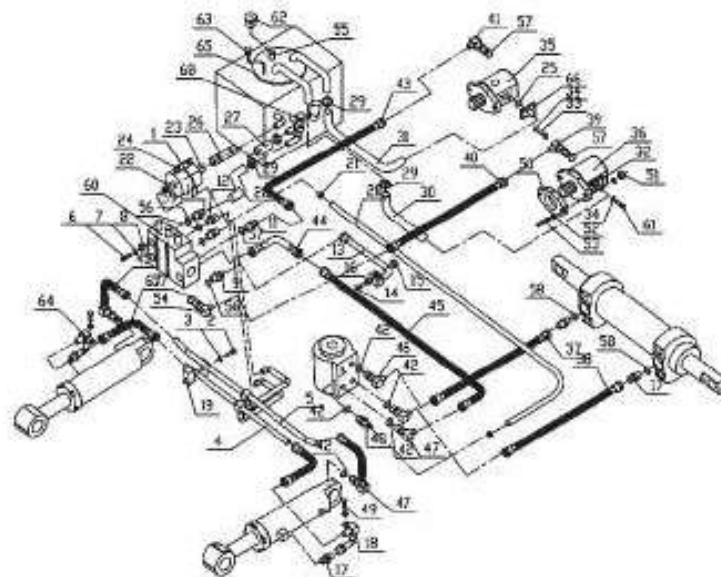
阀操纵（四片）/ VALVE CONTROL LINKAGE（FOUR-THROW）

| 序号 No. | 图号 Part No. | 零部件名称 Description | 件数 Q'ty | 备注 Remark |
|-----------|----------------|----------------------|---------------|--------------|
| 1 | FD70HD-Y6100*4 | Control valve | 多路阀 1 | 四片阀 |
| 2 | GB882-2000 | Pin,clevis | 销轴B8X26 8 | |
| 3 | GB91-2000 | Pin,cotter | 销Φ3.2X16 8 | |
| 4 | GB97.1-2002 | Washer | 垫圈8 8 | |
| 5 | FDA0YD-Y6400 | Lever,lift | 升降操纵手柄 1 | |
| 6 | FD30MA-Y9006 | Knob,lever | 手柄 4 | |
| 7 | FDA0YD-Y6500 | Lever,tilt | 倾斜操纵手柄 1 | |
| 8 | FDA0YD-Y6100 | Rod | 连接杆 4 | |
| 9 | FDA0YD-Y6300 | Bracket | 阀杆支架 1 | |
| 10 | GB5783-2000 | Bolt | 螺栓M10X25 2 | |
| 11 | FDA0YD-Y6600 | Lever | 第三片阀杆 1 | |
| 12 | GB93-87 | Washer,lock | 垫圈10 2 | |
| 13 | GB5783-2000 | Bolt | 螺栓M6X12 1 | |
| 14 | GB93-87 | Washer,lock | 垫圈6 1 | |
| 15 | FDA0YD-Y6200*2 | Shaft,lever | 连杆轴 1 | |
| 16 | FDA0YD-Y6001 | Spacer | 调节套 5 | |
| 17 | FDA0YD-Y6002 | Shim | 垫片 4 | |
| 18 | FDA0YD-Y6700 | Lever | 第四片阀杆 1 | |



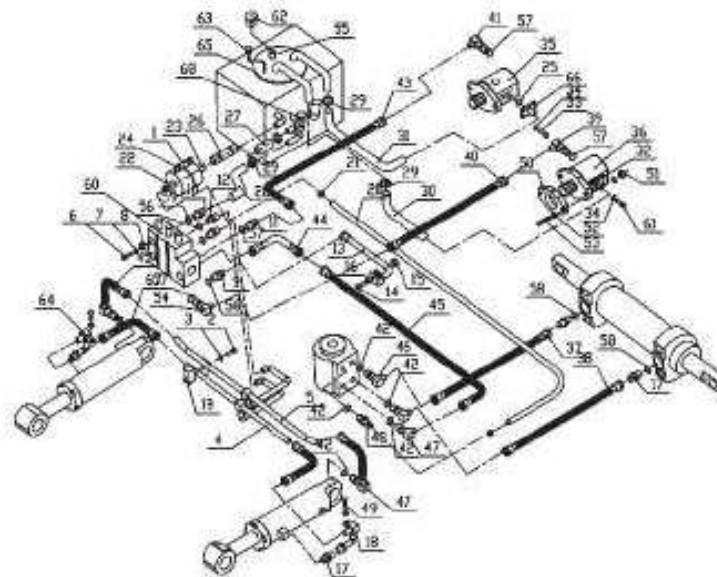
液压管路系统/HYDRAULIC SYSTEM

| 序号 | 图号 | 零部件名称 | 件数 | 备注 |
|-----|---------------|------------------|-----|-------------|
| Np. | Part No. | Description | Qty | Remark |
| 1 | JB/T8870-1999 | 卡箍90-110 | 2 | |
| 2 | GB5781-2000 | Bolt | 2 | 螺栓M8x25 |
| 3 | GB93-87 | Washer,lock | 12 | 垫圈8 |
| 4 | FDA0YD-Y1000 | Steel pipe ass'y | 1 | 倾斜油缸钢管总成(前) |
| 5 | FDA0YD-Y2000 | Steel pipe ass'y | 1 | 倾斜油缸钢管总成(后) |
| 6 | GB5782-2000 | Bolt | 4 | 螺栓M12x50 |
| 7 | GB6172.1-2000 | Nut | 4 | 螺母M12 |
| 8 | GB93-87 | Washer,lock | 4 | 垫圈12 |
| 9 | GJT-050-00 | Nipple | 1 | 直通管接头 |
| 10 | GJT-051-00 | Nipple | 1 | 回油接头 |
| 11 | GJT-052-00 | Nipple | 1 | 直通管接头 |
| 12 | GJT-053-00 | Nipple | 2 | 直通管接头 |
| 13 | FDA0YD-Y3000 | Steel pipe ass'y | 1 | 升降钢管总成 |
| 14 | GB5781-2000 | Bolt | 1 | 螺栓M8x30 |
| 15 | GB6172.1-2000 | Nut | 1 | 螺母M8 |
| 16 | GB97.2-2002 | Washer | 3 | 垫圈8 |
| 17 | GJT-054-00 | Nipple | 4 | 直通管接头 |
| 18 | FD70HD-Y3000 | Nipple | 1 | 接头总成 |
| 19 | FDA0YD-Y0001 | Clip | 2 | 管卡 |
| 20 | FDA0YD-Y0002 | Hose | 1 | 回油管1 |
| 21 | JB/T8870-1999 | Clip | 10 | 卡箍25-28 |
| 22 | JB/T8870-1999 | Clip | 1 | 卡箍84-108 |
| 23 | YK0812A3 | Filter | 1 | 滤油器 |
| 24 | FDA0YD-D3103 | Clip | 1 | 卡板 |
| 25 | GB1235-76 | O-ring | 2 | O型密封圈45x3.1 |
| 26 | FDA0YD-Y0004 | Hose | 1 | 回油管2 |
| 27 | FDA0YD-Y0005 | Hose | 1 | 回油管3 |
| 28 | FDA0YD-Y0006 | Hose | 1 | 多路阀回油管 |
| 29 | JB/T8870-1999 | Clip | 6 | 卡箍38-57 |



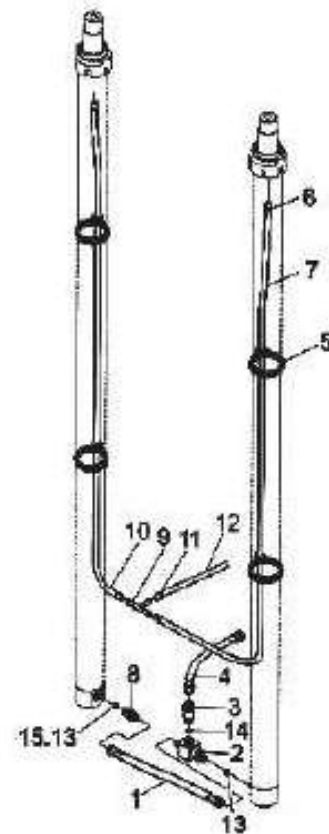
液压管路系统/HYDRAULIC SYSTEM

| 序号 | 图号 | 零部件名称 | 件数 | 备注 |
|-----|-------------------|----------------|-----|--------|
| No. | Part No. | Description | Qty | Remark |
| 30 | FD70HD-Y0002 | 后泵吸油管 | 1 | |
| 31 | FD70HD-Y0001 | 前泵吸油管 | 1 | |
| 32 | FDA0YD-Y4000 | 后泵进油口法兰 | 1 | |
| 33 | GB5785-2000 | 螺栓M10X1.25X25 | 4 | |
| 34 | GB93-87 | 垫圈10 | 8 | |
| 35 | CBFZ-G36/F4.5AFK1 | 双联齿轮泵(右旋) | 1 | |
| 36 | CBFT-G432ALK1X-A | 齿轮泵(左旋) | 1 | |
| 37 | TGIBI-10275 | 高压胶管 | 1 | |
| 38 | TGIBI-10285 | 高压胶管 | 1 | |
| 39 | GJT-055-00 | 直角接头 | 1 | |
| 40 | TGIBII-19094 | 高压胶管 | 1 | |
| 41 | GJT-056-00 | 直角接头 | 1 | |
| 42 | GB3452.1 | O形密封圈18X2.65 | 6 | |
| 43 | TGIBII-19048 | 高压胶管 | 1 | |
| 44 | FDA0YD-Y9000 | 弯头 | 1 | |
| 45 | TGIBI-10044 | 高压胶管 | 1 | |
| 46 | GJT-057-00 | 直角接头 | 2 | |
| 47 | GJT-058-00 | 直角接头 | 3 | |
| 48 | GJT-059-00 | 直通接头 | 1 | |
| 49 | GB5783-2000 | 螺母M10X1.25 | 10 | |
| 50 | FDA0YD-Y0009 | 垫 | 2 | |
| 51 | GB6173-2000 | 螺母M10X1.25 | 4 | |
| 52 | GB93-87 | 垫圈10 | 4 | |
| 53 | GB97.2-2002 | 垫圈10 | 4 | |
| 54 | FDA0YD-Y0003 | 双头螺栓 | 4 | |
| 55 | GJT-060-00 | 直角接头 | 1 | |
| 56 | FD70HD-Y1000 | 液压油箱盖板 | 1 | |
| 57 | GB1235-76 | O型密封圈32X3.1 | 1 | |
| 58 | GB3452.1 | O型密封圈23.5X3.55 | 1 | |



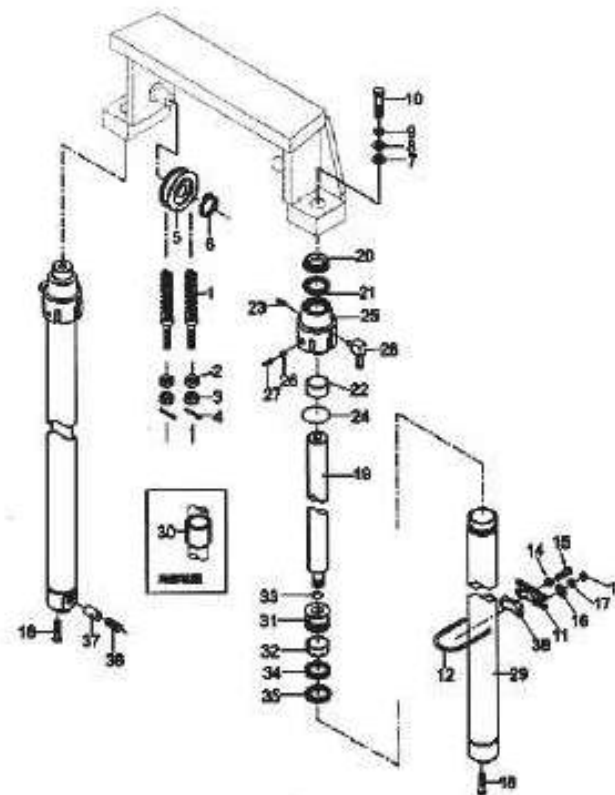
门架管路系统/HYDRAULIC SYSTEM MAST

| 序号 | 图号 | 零部件名称 | 件数 | 备注 |
|-----|----------------|----------------|-----|------------|
| Np. | Part No. | Description | Qty | Remark |
| | TCB19-19056 | Hose H.P. | 1 | 高压胶管 |
| 2 | GJT-109-00 | Nipple | 1 | 三通接头 |
| 3 | FD70HD-K5100 | Flow regulator | 1 | 限速阀 |
| 4 | FD70HD-K5200 | Hose H.P. | 1 | 高压胶管 |
| 5 | GB/T22344-2008 | Band | 4 | 尼龙扎带8X350 |
| 6 | JB/T8870-1999 | Clip | 6 | 双钢丝卡箍10-16 |
| 7 | FD70HD-K5001 | Hose | 1 | 耐油管 I |
| 8 | GJT-110-00 | Nipple | 1 | 直通接头 |
| 9 | FDA0YD-K3001 | Nipple | 1 | 回油接头 |
| 10 | FD70HD-K5001 | Hose | 1 | 耐油管 I |
| 11 | JB/T8870-1999 | Clip | 1 | 夹箍25-28 |
| 12 | FD70HD-K5002 | Hose | 1 | 耐油管 II |
| 13 | GB1235-76 | O-ring | 1 | O型密封圈 |
| 14 | GB1235-76 | O-ring | 1 | O型密封圈 |
| 15 | GB1235-76 | O-ring | 1 | O型密封圈 |



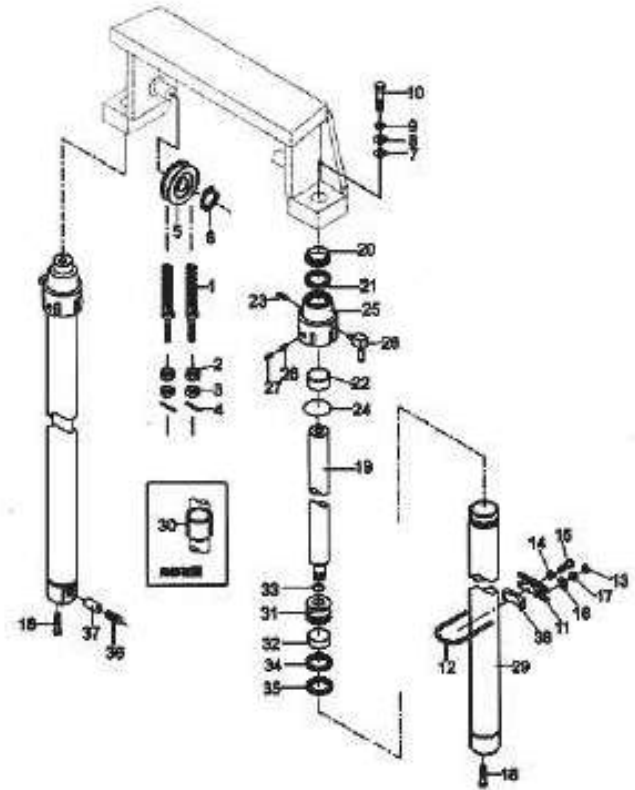
起升油缸总成/LIFT CYLINDER ASS'Y

| 序号 | 图号 | 零部件名称 | 件数 | 备注 |
|-----|---------------|---------------|-----|--------------|
| Np. | Part No. | Description | Qty | Remark |
| 1 | FD80HDS-K3300 | 链条总成 | 2 | |
| 2 | FD70HD-K3101 | Nut | 4 | 球形螺母 |
| 3 | GB6171-2000 | Nut | 4 | 螺母18X1.5 |
| 4 | GB91-2000 | Pin | 4 | 开口销4X40 |
| 5 | FDA0YD-K2200 | Sheave | 2 | 链轮 |
| 6 | GB894.1-55 | Snap ring | 2 | 弹性挡圈55 |
| 7 | FD70HD-K3004 | Shim | 2 | 调整垫 |
| 8 | FD70HD-K3005 | Shim | 4 | 调整垫 |
| 9 | GB5785-2000 | Bolt | 2 | 螺栓M30X2X70 |
| 10 | GB93-87 | Washer,lock | 2 | 垫圈30 |
| 11 | FD70HD-K3003 | Support | 2 | 油缸支撑块 |
| 12 | FD70HD-K3001 | U-bolt | 2 | U型螺栓 |
| 13 | GB6171-2000 | Nut | 4 | 螺母M12X1.25 |
| 14 | GB6173-2000 | Nut | 2 | 螺母M16X1.5 |
| 15 | GB5786-2000 | Bolt | 2 | 螺栓M16X1.5X50 |
| 16 | GB97.2-2002 | Washer | 4 | 垫圈12 |
| 17 | FDA0YD-K2004 | Bolt | 2 | 台阶螺栓 |
| 18 | FD80HDS-K3100 | Lift cylinder | 2 | 起升油缸 |
| 19 | FD80HDS-K3101 | Rod | 2 | 活塞杆 |
| 20 | FD80HDS-K3102 | Seal,dust | 2 | 防尘圈 |
| 21 | FD80HD-K3103 | U-ring | 2 | U型密封圈 |
| 22 | SF-2-7035 | Bushing | 2 | 钢背轴承(7035) |
| 23 | FD80HDS-K3104 | Plug | 2 | 螺塞ZG3/8" |
| 24 | GB3452.1 | O-ring | 2 | O型密封圈 |
| 25 | FD80HDS-K3105 | Cap | 2 | 缸盖 |
| 26 | FD80HDS-K3106 | Plug | 4 | 塞子 |
| 27 | GB80-85 | Screw | 2 | 螺钉M8X12 |
| 28 | GJT-060-00 | Nipple | 2 | 管接头 |
| 29 | FD80HDS-K3107 | Cylinder body | 2 | 缸体 |



起升油缸总成/LIFT CYLINDER ASS'Y

| 序号 | 图号 | 零部件名称 | 件数 | 备注 |
|-----|---------------|----------------------|-----|--------|
| No. | Part No. | Description | Qty | Remark |
| 30 | FD80HDS-K3108 | Sleeve,adjusted | 2 | 调整轴套 |
| 31 | FD80HDS-K3110 | Piston | 2 | 活塞 |
| 32 | FD80HDS-K3109 | Wearing | 2 | 支撑环 |
| 33 | FD80HDS-K3111 | Stop ring,steel wire | 2 | 钢丝挡圈 |
| 34 | FD80HDS-K3112 | Snap ring | 2 | 挡片 |
| 35 | FD80HDS-K3113 | U-ring | 2 | U型密封圈 |
| 36 | FD80HDS-K3114 | Piston | 2 | 滑阀 |
| 37 | FD80HDS-K3115 | Spring | 2 | 挡圈 |
| 38 | FD80HDS-K3116 | Rubber washer | 2 | 橡胶垫 |



倾斜油缸/TILT CYLINDER

| 序号 | 图号 | 零部件名称 | 件数 | 备注 |
|-----|---------------|----------------------|-----|---------------|
| No. | Part No. | Description | Qty | Remark |
| 1 | FD80HDS-K4001 | Ear ring | 1 | 耳环 |
| 2 | SF-2-5060 | Bushing | 1 | 钢背轴承5060B |
| 3 | FD80HDS-K4002 | Washer | 4 | 垫片 |
| 4 | GB79-85 | Screw | 1 | 螺钉M10X12 |
| 5 | FD80HDS-K4003 | Plug | 1 | 塞子 |
| 6 | FD80HDS-K4004 | Spacer | 1 | 调整轴套 |
| 7 | FD80HDS-K4005 | Guide sleeve | 1 | 导向套 |
| 8 | FD80HDS-K4006 | Dust seal | 1 | 防尘圈72 |
| 9 | FD80HDS-K4007 | Snap ring | 1 | 挡圈72 |
| 10 | FD80HDS-K4007 | Snap ring | 1 | 挡圈 |
| 11 | FD80HDS-K4008 | Snap ring | 1 | 挡圈 |
| 12 | FD80HDS-K4009 | U-ring | 1 | U型密封圈 |
| 13 | FD80HDS-K4011 | O-ring | 1 | O型密封圈 |
| 14 | SF-2-5030 | Bushing | 1 | 钢背轴承5030 |
| 15 | FD80HDS-K4012 | Tube, cylinder ass'y | 1 | 缸体 |
| 16 | FD80HDS-K4013 | Body, piston ass'y | 1 | 活塞体 |
| 17 | FD80HDS-K4014 | Spacer | 1 | 调整套 |
| 18 | FD80HDS-K4015 | Yx-ring | 2 | Yx型密封圈D100 |
| 19 | FD80HD-K4016 | Wearing | 1 | 支撑环 |
| 20 | SF-2-5058 | Bushing | 1 | 钢背轴承5058B |
| 21 | GB5782-2000 | Bolt | 1 | 螺栓M16X70 |
| 22 | GB93-87 | Washer, lock | 1 | 垫圈16 |
| 23 | GB6170-2000 | Nut | 1 | 螺母M16 |
| 24 | FD80HDS-K4017 | Snap ring | 1 | 挡圈 |
| 25 | FD80HDS-K4018 | Plate | 2 | 卡板 |
| 26 | FD80HDS-K4019 | Pin | 2 | 轴 |
| 27 | GB5786-2000 | Bolt | 4 | 螺栓M10X1.25X20 |
| 28 | GB93-87 | Washer, lock | 4 | 垫圈10 |

