



Spare Parts Catalogue

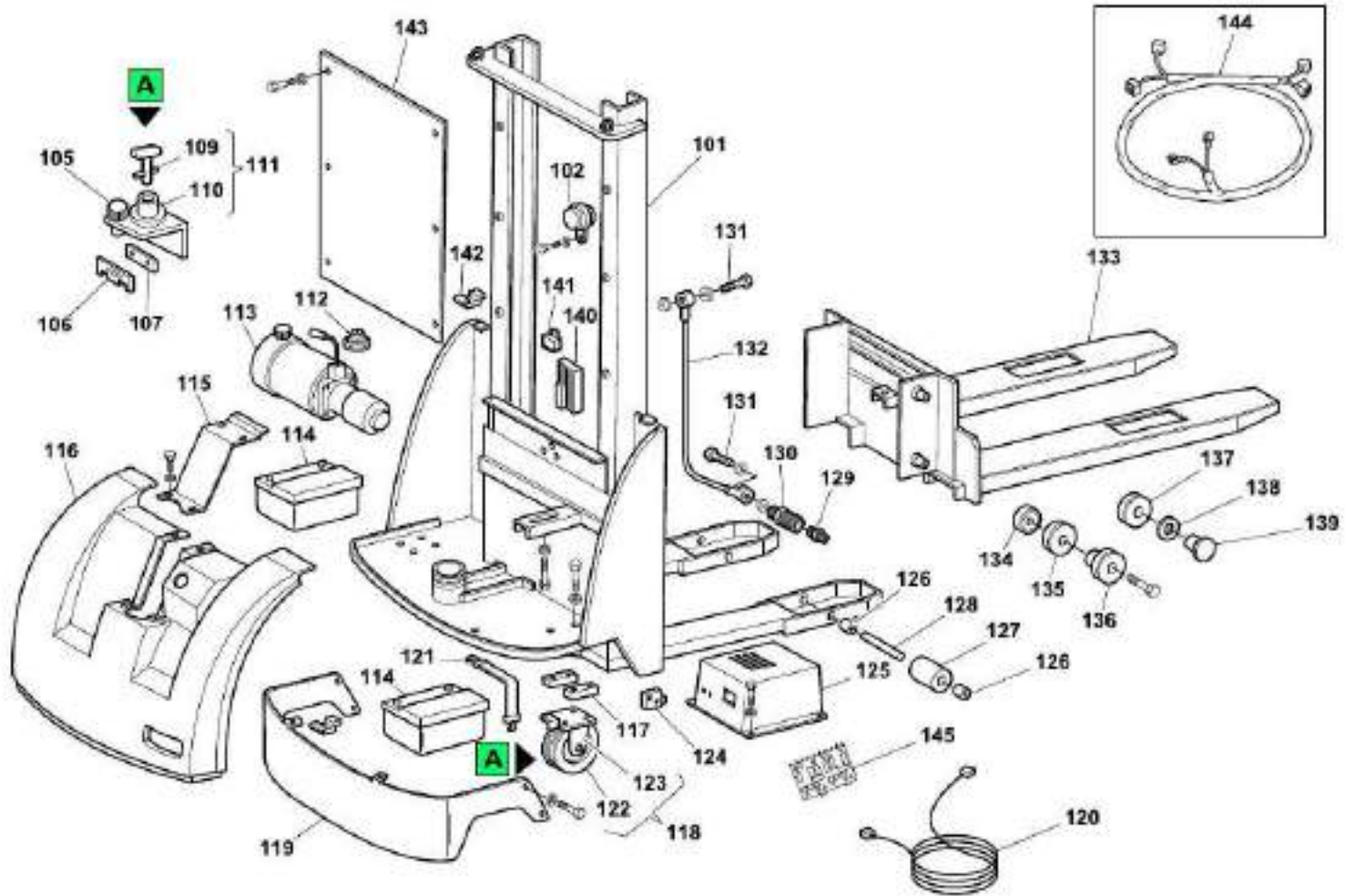
# GX10-09

Handling systems | **Deichselstapler**




Valid for machine code: **HC010000000**

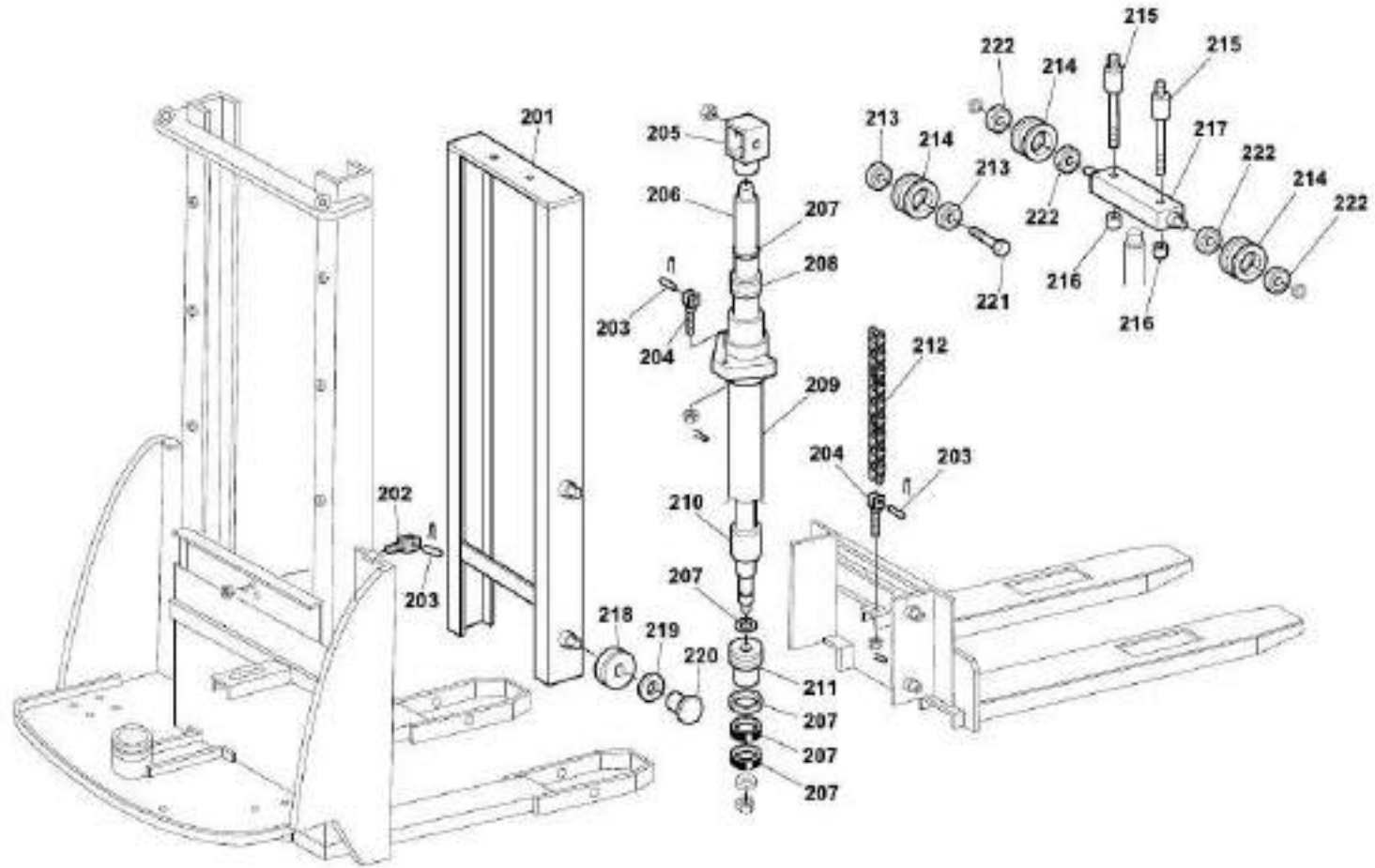
Revision: **0 (12/2006)**

Copyright 2010 Pramac Group, All Rights Reserved.

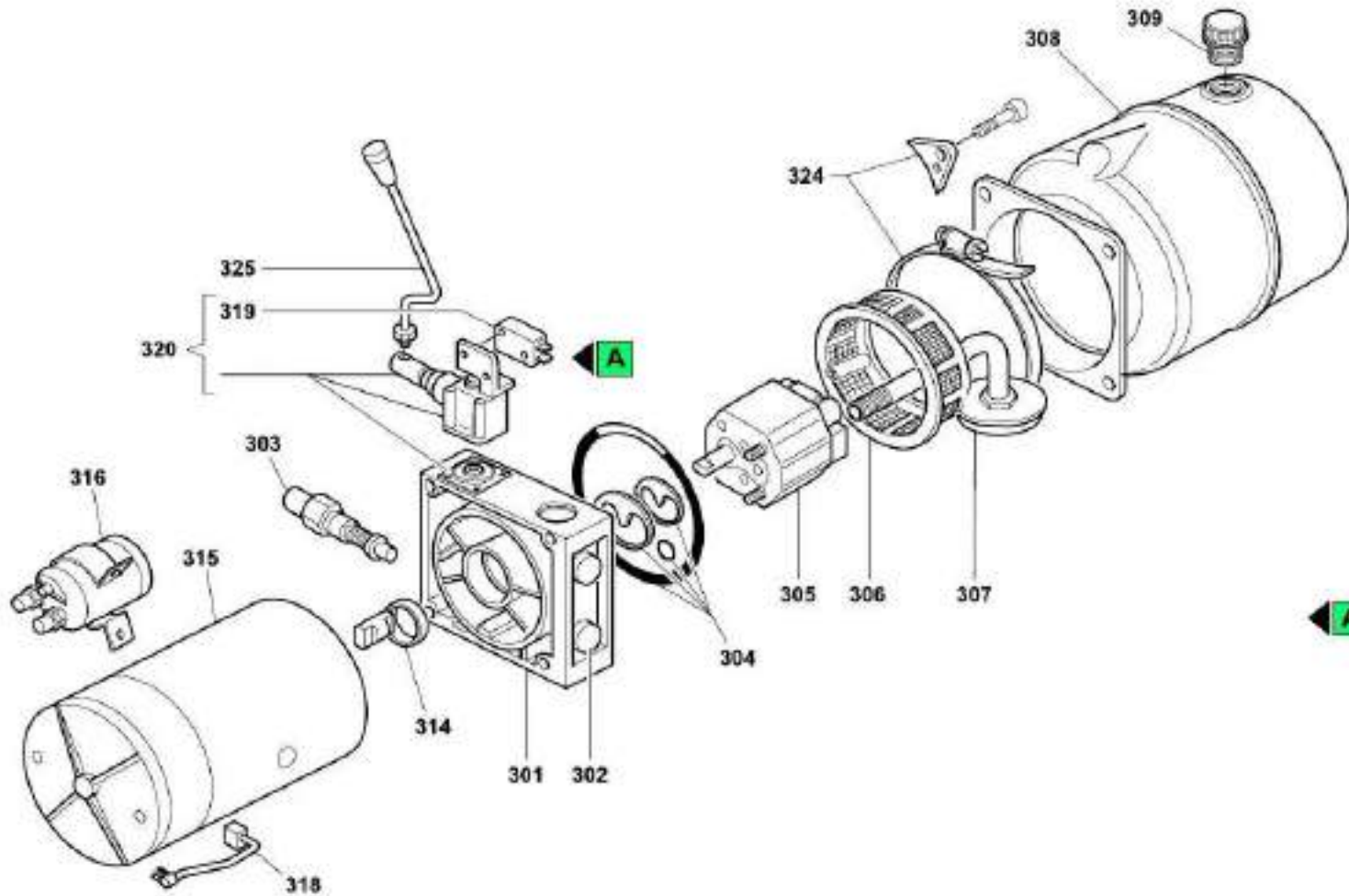


Position	Part Number	Description	Notes
100	RPR0050	Wheel Shield (lag 150)	-
101	V0311070058-PRAMAC	Telaio Gx 10/09 Vern.verde Pramac	-
102	G075110	Horn 24v Dc	-
105	G070625	Fuse Holder Screw Cap + Fuse 6.3a	-
106	G077540	Fuse 160a (rfm Reghel)	-
107	G070603	Fuse Holder X Fuse 160amp	-
109	G075220	Key X Battery Disconnecting Switch	-
110	G075221	Battery Disconnecting Switch Block	-
111	G075102	Battery Disconnecting Switch 1 Pole	-
112	G052002	Rubber Bellows (for Stackers)(0-rab/010)	-
113	▲ G081035	Hydraulic Power Pack '06 Tx12-gx10/12	Gültig für Produkte mit der Seriennummer bis 2003HG001450 Gültig für Produkte mit der Seriennummer ab 2003HG001451
	▲ G081021	Hydraulic Unit 222353003 Up100 (tx12- Gx10-12)	
	▲ G081029	Central S3010001.000 X Tx12 - Gx10/12	
114	G089701	Battery "exide Gel" 70ah-12v	-
	G099300024	Battery 74ah-12v	-
115	V0310018015-PRAMAC	Hood Guard Lock Gx10-12 Green Pram.	-
116	S0310018010	Hood Guard Gx 10-12	-
117	V01941-9005	Painted Wheel Spacer '06 Gx	-
118	G053328	Polyurethane Wheel T150x40/49 Cc Spgp60 +par.	-
119	S0313010039	Motor Wheel Protection Gx10 Painted	-
120	G079311	Battery Charger Cable L1500mm Schuko Socket	-
121	G000112	Battery Elastic Webbing Gx10/12	-
122	G053334	Polyurethane/aluminium Wheel T8017cc New X G10-te Supporto Ruota 150-160/50 H.m.120 Mm.40	-
123	G053412		-
124	G075006	Microswitch Rolle	-
125	G008007	Open Frame Battery Charger 14a-24v X Gx10-12 Gel	-
	G099300026	Open Frame Battery Charger 13a-24v(tx12-gx10)240v	-
	G099300058	Open Frame Battery Charger 13a-24v X Tx12-gx10	-
	G099300065	Open Frame Battery Charger 13a-24v(straddle)120v	-
126	S0302016026	Roller Spacer Sing.tx-gx (L15) Zinc	-
127	S0302020117	Polyurethane Roller D82x70 + Bearing	-
128	S0302015025	Clevis Pin Tx/gx/lx "burnished"	-
129	G084103	Male/male Adaptors 3/8"	-
130	G085003	Flow Control Valve 3/8"	-
131	G084001	Screw Perforate (4 Holes ) 3/8" L 29 -0,5/0 Ch22	-
132	G083012	Tube R1at 3/8"	-
133	V0317010035-9005	Complete Fork Painted Gx 10/09-22	-

Position	Part Number	Description	Notes
134	<b>G010151</b>	Bearing 6305 (25-62-17)	-
135	<b>S0207016006</b>	Sliding Roll Fork Tmc 10/16	-
136	<b>S0207018001</b>	Fork Roller Guide Gx/tx	-
137	<b>G019306</b>	Bearing D70 (csf.002)	-
138	<b>G019310</b>	Pushing Disc (10004.102)	-
139	<b>G019309</b>	Side Sliding Block (10002.102)	-
140	<b>G075050</b>	Pramac Controller Rf050h70-120a X Gx 10	-
141	<b>G077201</b>	Relay 30a 24v Contatto A Scambio	-
142	<b>G034903</b>	Cage Nut M8 Zn	-
143	<b>S0200038004</b>	Plexiglass Guard Tx-gx10/09 Vers.2	-
144	 <b>S0318028013</b>	Electric Wiring Cables Gx 10-12 (pramac)	Gültig für Produkte mit der Seriennummer bis 2003HG001450
	 <b>S000045001</b>	Cablaggio Elettrico Gx 10-12 (pramac)	Gültig für Produkte mit der Seriennummer ab 2003HG001451
	 <b>POCD00007</b>	Kit Cavi Completo Per Gx10 Pramac/ Hydr-app 03	
145	<b>PTB00001</b>	Electronic Board For Open Battery Charger Cx Plus/cx/gx10/tx12/gx12	-
	<b>PTB00005</b>	Scheda Elettronica Per Raddriz.	-



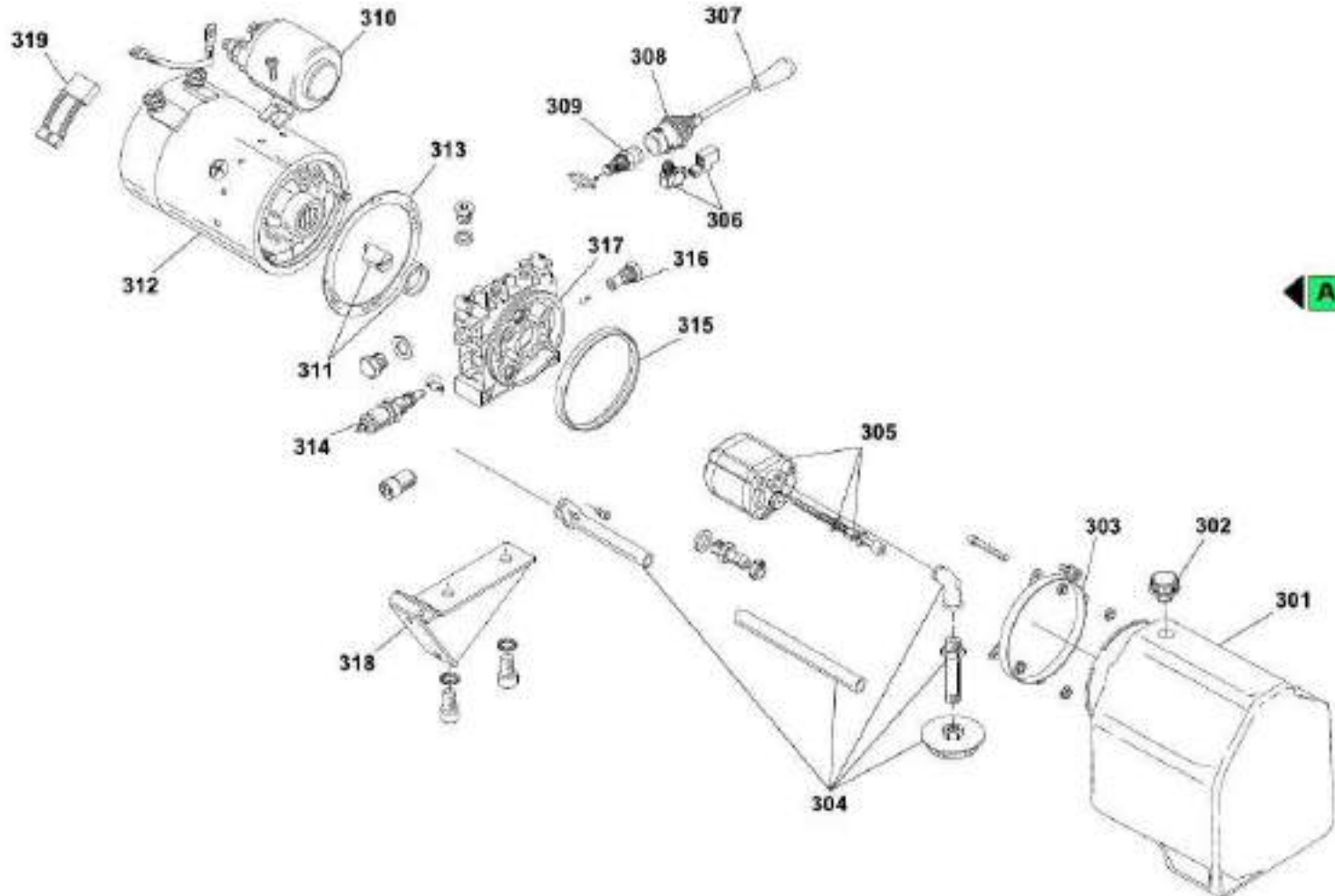
Position	Part Number	Description	Notes
202	S0307015015	Short Chain Holder Te-tm-l/vt Zinc Plated	-
203	G062104	Flayer Chain Pin BI544 D6x29	-
204	S0307015017	Long Chain Holder Te-tm-l-l/vt Zinc Plated	-
205	S0306051022	Cast Iron Pulley Holder Te-tm-l Painted	-
206	S000035305	Cylinder Rod Tx-gx 10/09	-
207	G090015	Gasket Set Tmc16/20	-
208	S0206011001	Cylinder Bushing Tmc 10/16-20	-
209	S0206010062	Complete Cylinder Tx-gx 10/09 Painted	-
210	S0206016008	Cylinder Spacer L.35 Te-tm	-
211	S0306061009	Piston Tmc 10/16-20	-
212	G062016	Flayer Chain Stub BI534-49p	-
213	PMT240703	Sost. Con G010401	-
214	S0300201034	Chain Pulley Sing. X12q Burnished	-
215	S0306015052	Free Lift Pin L10-I16	-
216	S0306015036	Free Lift Pin Spacer Te-tm	-
217	S0306012072	Double Pulley Holder L16 Painted "1998"	-
218	G019306	Bearing D70 (csf.002)	-
219	G019310	Pushing Disc (10004.102)	-
220	G019309	Side Sliding Block (10002.102)	-
221	S0306055043	Cast Iron Pulley Pin Holder Burnished	-
222	G010403	Bearing 6005 2rs (25-47-12)	-



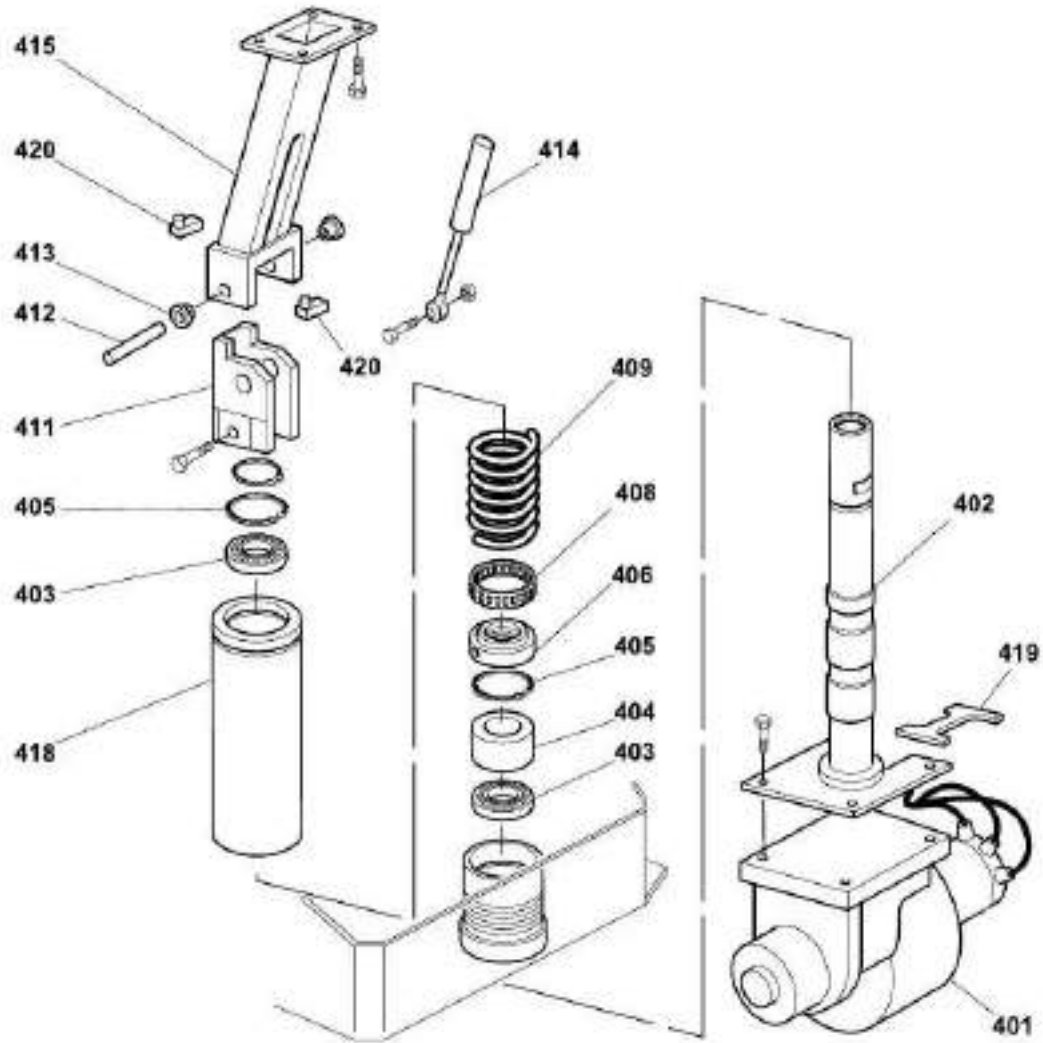


Position	Part Number	Description	Notes
301	G082195	Body Up100 K1g3-06+oil Seal	-
302	G082171	Non Return Valve Rs3/817-03	-
303	G082107	Relief Valve Vm01 Hdm10 T.95-210	-
304	G082165	Body Gasket Set Up100	-
305	G082100	Pump Ap100/1.7 S.409+cop.748220020	-
306	G082090	Filter Conv.150 Micron (757500070)	-
307	G082196	Gruppo A.h105i78-900 250m	-
308	G082228	Tank Up100 P08,or-bbt (673450200)	-
309	G082099	Loading Cap Sf1/2g(hidr.678000310)	-
314	G082158	Joint E145 M.c.c T.e	-
315	G082230	Engine C240ak/y0/d02p 024v 2.2	-
316	G082127	Complete Relay 24v C.c. P.c-e-f-g (ef.)	-
318	G082233	Cable + Brushes 24v	-
319	G082223	Microswitch For Manual Command Up50-up100	-
320	G082224	Valve Zr817/22-tvml + Cap	-
324	G082227	Tank Clamping Set Pl. Up100 6-14l.	-
325	G082232	Lever Stick Al029 Up100	-
999	 G081021	Hydraulic Unit 222353003 Up100 (tx12- Gx10-12)	Gültig für Produkte mit der Seriennummer bis 2003HG001450

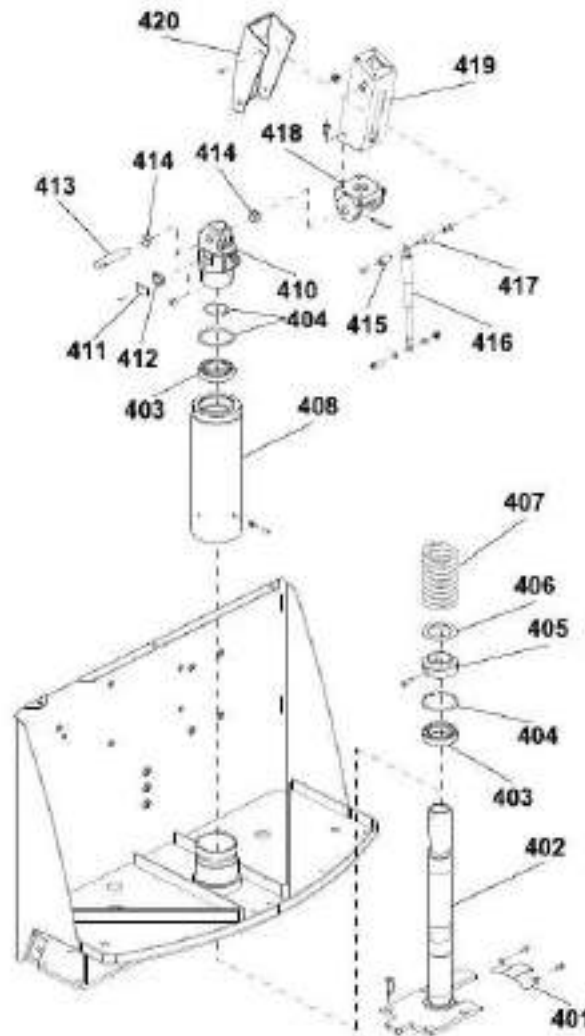




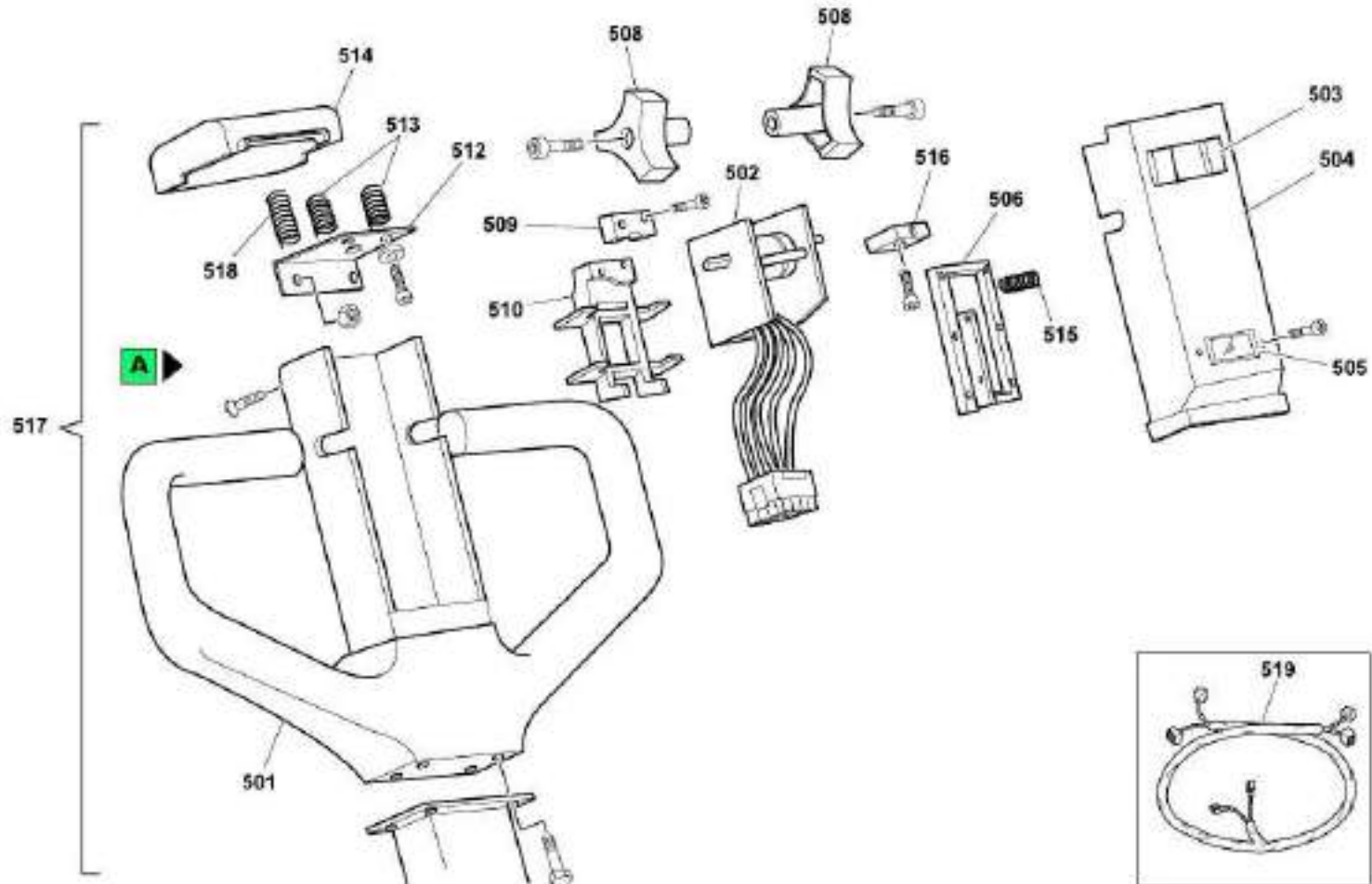
Position	Part Number	Description	Notes
301	PCY61214500	Reservoir Bottle	-
302	PCY49154500	Tappo Serbatoio Olio Tx Hydr-app	-
303	PCY25004800	Band For Hydraulic Unit H	-
304	PCY12002	Kit Tubi Tx Hydr-app	-
305	PCY17050006	Hydraulic Unit Pump Hx	-
306	PCY46109900	Microswitch	-
307	PCY49104600	Pomello Centralina Hydr-app	-
308	PCY25005800	Hydraulic Power Pack Complete Lever	-
309	PCY20023000	Valvola Tx10/12	-
310	PCY46113300	Relais 24v 80a Iskra (11250143)	-
311	PCY60410600	Giunto A Penna Per "mc" Con Motore Elettrico 2.05-2.2kw E Pompe Gr.1	-
312	PCY24011600	Control Box Motor	-
313	PCY61200100	Gasket For Hydraulic Unit H	-
314	PCY21000001	Valvola Max 50-210 Bar	-
315	PCY61212400	Hydraulic Unit O-ring Hx	-
316	PCY20020400	Hydraulic Unit Retention Valve Hx	-
317	PCY71013005	Central Flange	-
318	PCY17010067	Piedino Ancoraggio Tx Hydr-app	-
319	PCY00004056	Brush Kit Gx/10/12 Tx12	-
999	 G081029	Central S3010001.000 X Tx12 - Gx10/12	Gültig für Produkte mit der Seriennummer ab 2003HG001451



Position	Part Number	Description	Notes
401	<b>G074425</b>	Motor Wheel 500w 24v Magn.perm.x Gx 10	-
402	<b>S0313010025</b>	Motor Wheel Support Gx 10 Painted	-
403	<b>G010214</b>	Bearing 6010 2rs(50-80-16)	-
404	<b>S0303018002</b>	Motor Wheel Sliding Bushing L10	-
405	<b>G090021</b>	Stackers Motor Wheel Seeger Kit	-
406	<b>S0303016030</b>	Motor Wheel Shaft Washer L10	-
408	<b>S0313080057</b>	Complete Motor Bearing Stacker	-
409	<b>G001108</b>	Spring De78 F.11x162 P.22 Xg10	-
411	<b>P0K100006</b>	Tiller Kit L/k20	-
412	<b>S0304013027</b>	Handle Pin Gx-lx-k20 "burnished"	-
413	<b>G016353</b>	Self-lubricating Bushing 20x28x35 L=20	-
414	<b>G001703</b>	Gas Spring 198.236.17-gf2	-
415	<b>S0304010142</b>	Handle Support Painted "I"-k20"	-
418	<b>S0303010139</b>	Spring Loader Lx-gx Zinc Plated	-
419	<b>S0303010153</b>	Motor Wheel Wiring Bracket L10-I16	-
420	<b>G075004</b>	Microswitch For Tow Bar L10	-

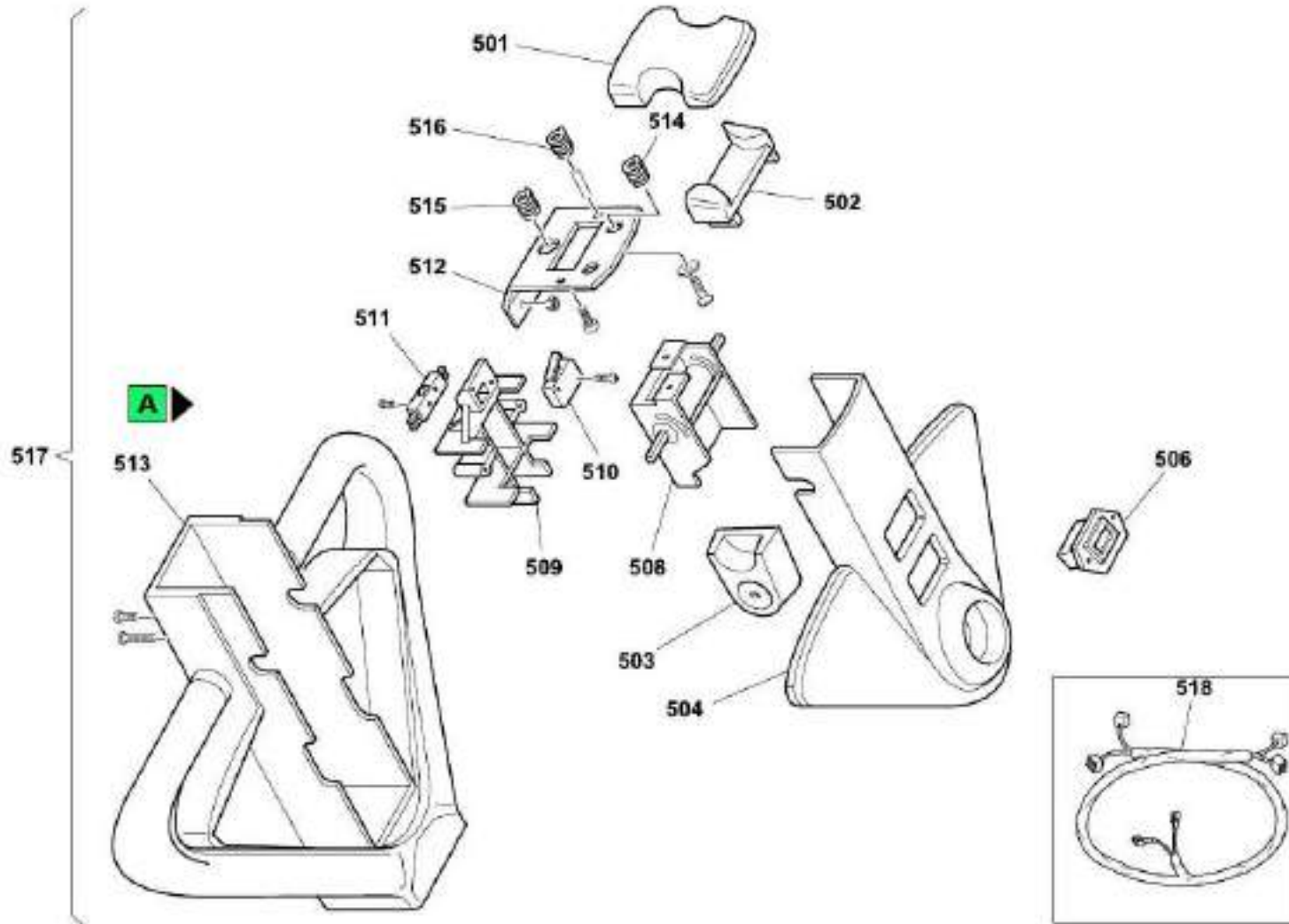


Position	Part Number	Description	Notes
401	<b>S0303010153</b>	Motor Wheel Wiring Bracket L10-I16	-
402	<b>S0313010025</b>	Motor Wheel Support Gx 10 Painted	-
403	<b>G010214</b>	Bearing 6010 2rs(50-80-16)	-
404	<b>G090021</b>	Stackers Motor Wheel Seeger Kit	-
405	<b>S0303016030</b>	Motor Wheel Shaft Washer L10	-
406	<b>S0313080057</b>	Complete Motor Bearing Stacker	-
407	<b>G001108</b>	Spring De78 F.11x162 P.22 Xg10	-
408	<b>S0303010139</b>	Spring Loader Lx-gx Zinc Plated	-
410	<b>V000044101-9005O</b>	Supporto Timone Gx-lx '03 Vern	-
411	<b>S000044034</b>	Protection Plate Tiller Microswitch Gx-lx Dark Zinc Coated	-
412	<b>G075004</b>	Microswitch For Tow Bar L10	-
413	<b>S000025501</b>	Tiller Pin Gx-lx '03 Burnished	-
414	<b>G016307</b>	Boccola Flangiata Du 18-20	-
415	<b>S000025503</b>	Distanziale Madrevite Timone Gx-lx '03 Brunito	-
416	<b>G001703</b>	Gas Spring 198.236.17-gf2	-
417	<b>S000025502</b>	Distanziale Vite-madrevite Timone Gx-lx '03 Brunito	-
418	<b>S000045104</b>	Tiller Bracket '03 Fx-gx-lx Galvanized	-
419	<b>V09415-9005</b>	Tiller Box Gx-lx '03 Painted	-
420	<b>S000025901</b>	Coperchio Timone Gx-lx '03	-

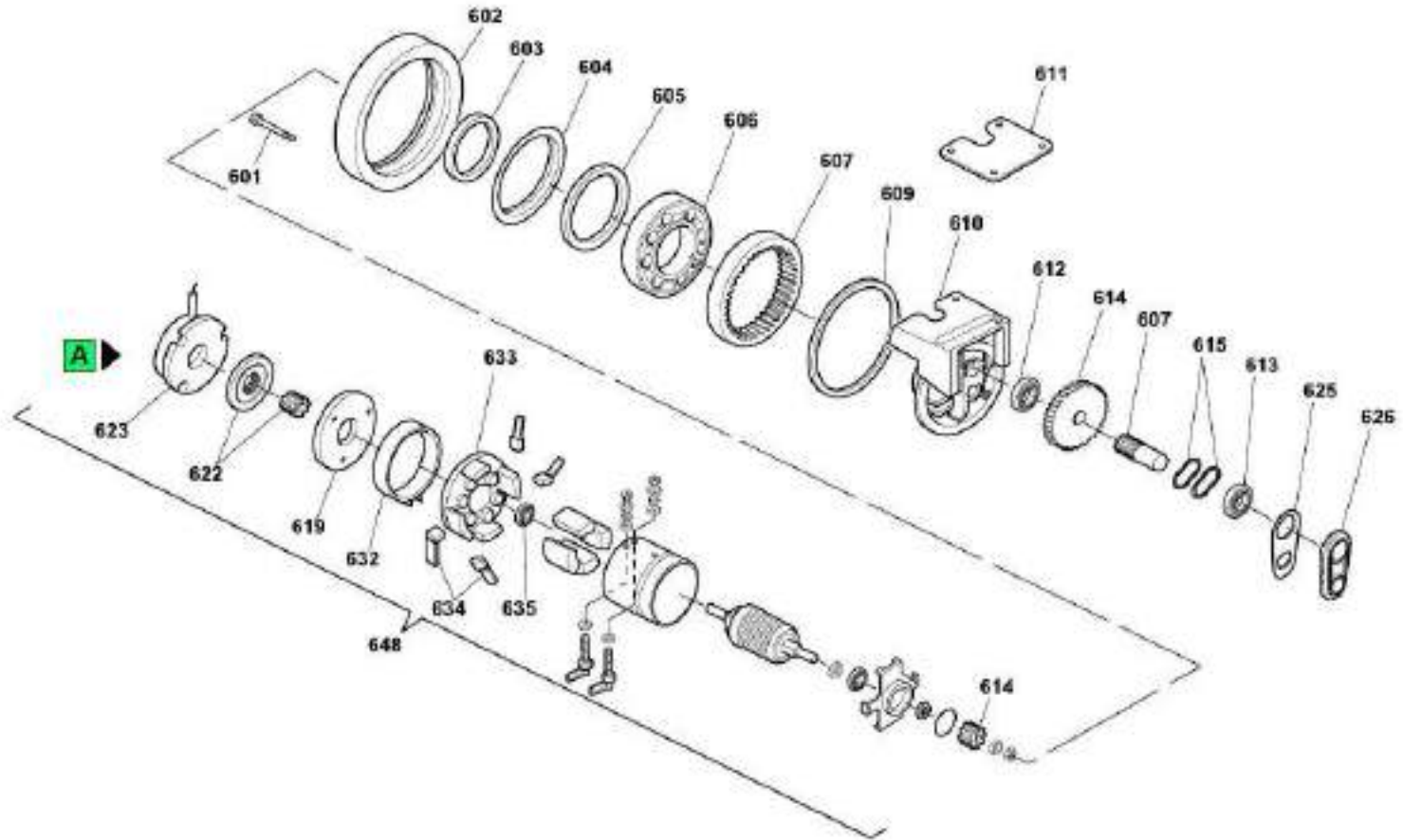




Position	Part Number	Description	Notes
501	S0304010208	Coated Handle (poly) Lk	-
502	G077007	Electronic Throttle Gph/ht3 X Gx10 Wired	-
503	S0304018020	Handle Pushbutton Switch Lk	-
504	S0304018019	Cover Lk X Stackers	-
505	G079005	Battery Level Gauge Curtis	-
506	S0304018022	Handle Microswitch Support Lk	-
508	S0304018018	Handle Butterfly Lk	-
509	G075016	Microswitch 5a 250v	-
510	S0304018021	Handle Support Potentiometer Lk	-
512	S0304017011	Handle Emergency Support Plate Lk	-
513	G001132	Spring De11 Wire 1 - 4 Turns L10 Mol/zn	-
514	S0304018017	Handle Emergency Lk	-
515	G001131	Spring De5,6 F0,5 - 10 Turns L20 Zinc Plated	-
516	G075017	Microswitch Xg52-j21	-
517	▲ ▲ S0304010285 S0314110065	Handle Complete Lk/elev. X Gx 10 Handle '00 Complete Stacker Gx	Gültig für Produkte mit der Seriennummer ab 1999HG000001 zu 2000HG001348 Gültig für Produkte mit der Seriennummer ab 2000HG001349
518	G001134	Spring De12,3 F1 - 9 Turns - L=24 Zinc Plated	-
519	S0319012001	Cable Tiller L/g (curtis)	-



Position	Part Number	Description	Notes
501	S0304178033	Handle Emergency '00	-
502	S0304178032	Handle Horn Rocker Switch '00	-
503	S0304178031	Handle Butterfly '00	-
504	S0314108031	Handle Cover '00 Gx Stackers Series	-
506	G079005	Battery Level Gauge Curtis	-
508	G077007	Electronic Throttle Gph/ht3 X Gx10 Wired	-
509	S0304178034	Handle Potentiometer Support '00	-
510	G075017	Microswitch Xg52-j21	-
511	G075016	Microswitch 5a 250v	-
512	G07330	Handle Emergency Support Plate '00	-
513	S0304178044	Coated Handle '00 (poly)	-
514	G001132	Spring De11 Wire 1 - 4 Turns L10 Mol/zn	-
515	G001134	Spring De12,3 F1 - 9 Turns - L=24 Zinc Plated	-
516	G001131	Spring De5,6 F0,5 - 10 Turns L20 Zinc Plated	-
517	S000044010 S0314110065	Complete Tiller '05 Gx 10 Handle '00 Complete Stacker Gx	- -
518	P0CD00015 S0319012001	Electric Wiring Gx10/12 Edition II Cable Tiller L/g (curtis)	- -



Position	Part Number	Description	Notes
601	<b>G073242</b>	Screw Wheel	-
602	<b>G000120</b>	Motor Wheel Rubber Ring Ecol. Gx10-g10 (13271)	-
	<b>G073259</b>	Rubber Motor Wheel Ring G10-gx10	-
	<b>G073326</b>	Motor Wheel Adiprene Ring G10	-
	<b>PLC13266S</b>	Anello Motoruota Gomma Scolpito Per Gx10	-
	<b>PLC13269S</b>	Anello Motoruota Adiprene Scolpito Per Gx10	-
603	<b>G073006</b>	Motor Wheel Ring	-
604	<b>G073008</b>	Protection Ring	-
605	<b>G073007</b>	Motor Wheel Gasket	-
606	<b>G073009</b>	Bearing	-
607	<b>G073260</b>	Pinion +crown Wheel	-
609	<b>G073245</b>	Motor Wheel Gasket	-
610	<b>G073246</b>	Motor Wheel Casting	-
611	<b>G073011</b>	Motor Wheel Gasket	-
612	<b>G073247</b>	Bearing	-
613	<b>G073012</b>	Roulement Pos.174	-
614	<b>G073029</b>	Pinion + Driver Wheel	-
615	<b>G073030</b>	Compensation Ring	-
619	<b>G073016</b>	Brake Holder Plate	-
622	<b>G073066</b>	Brake Lining +hub	-
623	<b>G073150</b>	Electric Brake Motor 24v	-
625	<b>G073013</b>	Gasket	-
626	<b>G073014</b>	Cover	-
632	<b>G073032</b>	Paddled Clamp	-
633	<b>G073115</b>	Slip Support	-
634	<b>G073138</b>	Brushes Motor Kit 24v	-
635	<b>G073249</b>	Slip Bearing 6201 2src3	-
648	<b>G073336</b>	Permanent Magnet Motor	-