



*We Makes Ideas Alive*



**NEOS II 14, 16, 20 AC**  
**NEOS II 16 SE AC**



# Reach Truck **Neos II 14-16-20 ac**



Neos II represents the ultimate in reach trucks available on the market, capable of offering excellent performance under all working conditions. Each component is properly tested and subjected to the final tests in order to achieve a competitive and satisfactory product. The drive units, electronic controls and lift masts confirm to the highest quality standards, constituting a real asset to this type of product.

#### **Chassis**

The mono bloc chassis construction ensures maximum stability and superior mechanical strength in all drive and stacking situations, maintaining high residual capacities even at maximum heights. The battery compartment is easily accessible by lifting the bulkhead, simplifying daily and periodical checks and recharging. The standard lateral battery removal system on rollers simplifies battery replacement for heavy duty use over several work shifts.

#### **Drive**

Reliable sensor less three phase current traction drive motors able to meet the most demanding performance requirements, delivering the necessary power under all load conditions as the

traction speed exactly depends on the position of accelerator pedal.

#### **Steering wheel**

Electronic steering wheel with electronic components and motor granting safe and silent operations to be acted with a minimum force. Steering wheel which can be longitudinally adjusted for an excellent driving comfort. Possibility to select the driving way at 180° and 360° simply pressing on the desired push button.

#### **Hydraulic functions**

Powerful and noiseless lift motor in alternated current ac controlled by proportional solenoids which regulates the pump rpm, always providing the right quantity of oil. All the hydraulic functions are controlled by finger tips which ensure precise and safe load handling for the operator. Lifting gear with integrated braking system granting gradual slow down at end of travel avoiding rough stops which could compromise load stability.

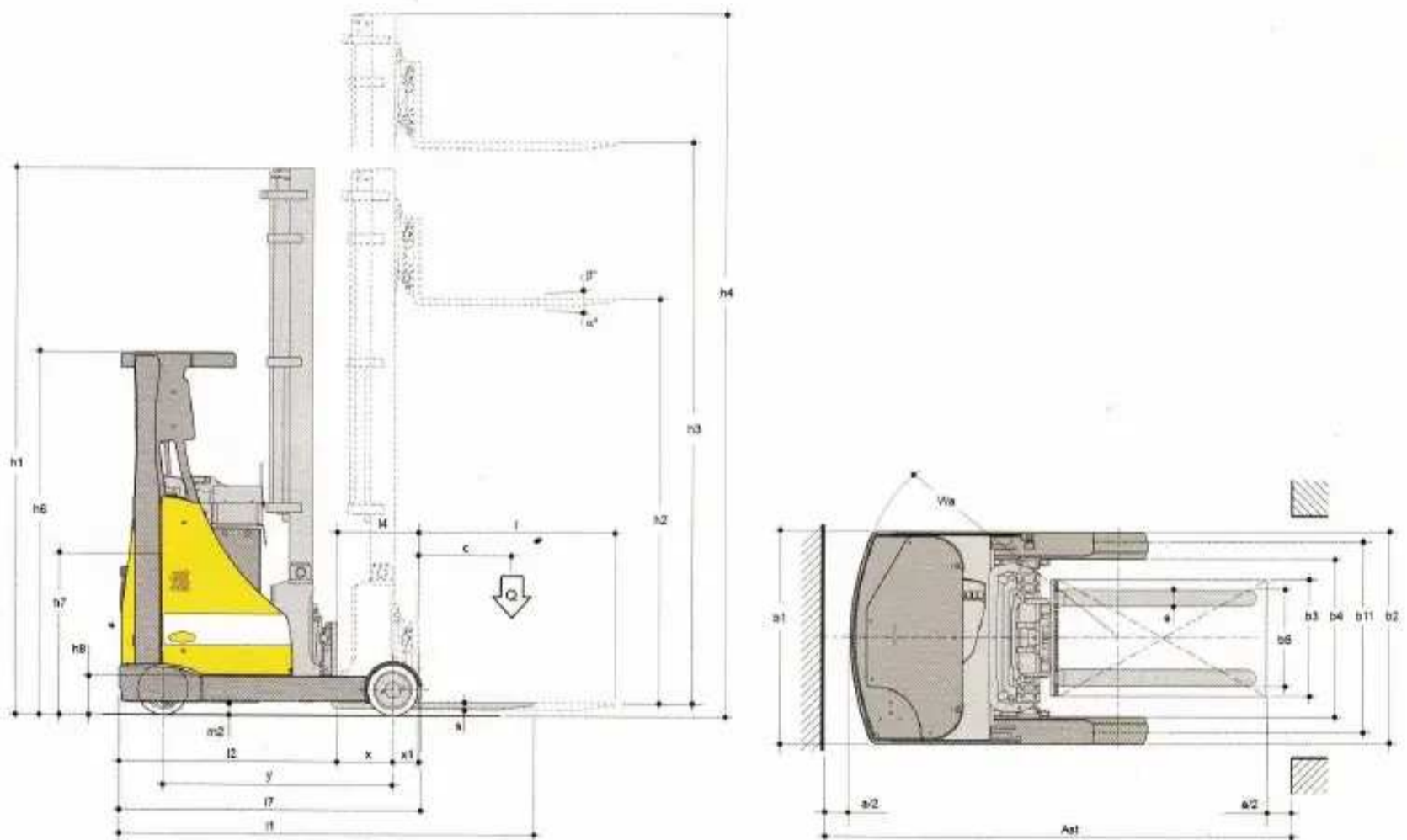
Characteristics	1.1	Manufacturer	OMG S.r.l.				
			Neos II 14 ac	Neos II 16 ac	Neos II 20 ac		
	1.2	Model					
	1.3	Drive		electric			
	1.4	Operator type		seat			
	1.5	Load capacity / rated load	Q t	1.4	1.6	2.0	
	1.6	Load centre distance	c	mm	600		
	1.8	Load distance (centre of load axle to fork face)	x	mm	325	425	425
		Mast pushed forward	x1	mm	190	220	220
	1.9	Wheelbase	y	mm	1.345	1.470	1.470
Weights	2.1	Service weight incl. battery (see line 6.5)		kg	3.350	3.800	3.900
	2.3	Axle loading, unladen front/rear		kg	2.150 / 1.200	2.360 / 1.440	2.452 / 1.448
	2.4	Axle loading, mast advanced, laden front /rear		kg	724 / 4.028	942 / 4.760	735 / 5.165
	2.5	Axle loading, mast retracted, laden front /rear		kg	1.846 / 2.908	1.960 / 3.440	2.275 / 3.625
Wheels Chassis	3.1	Tires			vulkollan		
	3.2	Tire size, front		mm	300	343	343
	3.3	Tire size, rear		mm	350	350	350
	3.5	Wheels, number front / rear (x = driven wheels)		n°		1x / 2	
	3.6	Track width, front	b10	mm		/	
	3.7	Track width, rear	b11	mm	1.177	1.182	1.182
Basic dimensions	4.1	Fork carriage tilt forward /backward	$\alpha/\beta$	°		3 / 5	
	4.2	Mast lowered height	h1	mm		2.665	
	4.3	Free lift	h2	mm		2.060	
	4.4	Lift height	h3	mm		5.960	
	4.5	Mast extended height	h4	mm		6.620	
	4.7	Overhead load guard (cab) height	h6	mm		2.100	
	4.8	Seat height	h7	mm		1.050	
	4.10	Height of wheel arms	h8	mm	225	225	225
	4.19	Overall length	l1	mm	2.425	2.470	2.470
	4.20	Length to face of forks	l2	mm	1.275	1.320	1.320
	4.21	Overall width	b1/b2	mm	1.270	1.270	1.270
	4.22	Forks dimensions	s/e/l	mm	40/100/1.150	40/120/ 1.150	40/120/ 1.150
	4.23	Fork carriage ISO 2328, class /type A, B.				2/A	
	4.24	Fork carriage width	b3	mm		840	
	4.25	Width over forks	b5	mm		720	
	4.26	Distance between support arms	b4	mm	948	948	948
	4.28	Reach distance	l4	mm	533	655	655
	4.31	Ground clearance under mast, laden	m1	mm	/	/	/
	4.32	Ground clearance, centre of wheelbase	m2	mm	75	75	75
	4.33	Aisle width for pallets 1000 x 1200 crossways	Ast	mm	2.685	2.775	2.775
4.34	Aisle width for pallets 800 x 1200 lengthways	Ast	mm	2.725	2.812	2.812	
		Truck diagonal	D	mm			
4.35	Turning radius	Wa	mm	1.610	1.740	1.740	
4.37	Length across wheel arms	l7	mm	1.770	1.970	1.970	
Performances	5.1	Travel speed laden / unladen		km/h	13 / 13	13 / 13	13 / 13
	5.2	Lifting speed laden / unladen		m/s	0.35 / 0.50	0.35 / 0.50	0.35 / 0.50
	5.3	Lowering speed laden / unladen		m/s		0.50 / 0.45	
	5.4	Reach speed, laden /unladen		m/s		0.10 / 0.10	
	5.8	Max gradient performance		%	10 / 15	13 / 20	13 / 20
	5.9	Acceleration time, laden /unladen		s		6 / 5.6	
	5.10	Service brake			electric	hydraulic	hydraulic
	5.11	Parking brake				electric	
Electric Motor	6.1	Traction motor, rating 52 - 60 min		kW		6.5	
	6.2	Lift motor, rating 53 - 15%		kW		15	
	6.3	Battery according to DIN 43531 / 35 / 36 A, B, C, no				no	
	6.4	Battery voltage, nominal capacity K5		V/Ah	48 / 465	48 / 620	48 / 620
	6.5	Battery weight		kg	700	950	950
	6.6	Energy consumption according to VDI cycle		kW/h			
Others	8.1	Type of drive control				inverter AC	
	8.2	Operating pressure for attachments		bar		180	
	8.3	Oil volume for attachments		l/min		25	
	8.4	Sound level at driver's ear according to EN 12 053		dB(A)		< 70	

\* option

Technical specification according to VDI 2198, technical values are referred to the standard product. Different masts, different tires, additional equipment, etc. could produce other values. Information and data are given for information only, OMG S.r.l. will have the sole right for technical changes and improvements without giving any notice.

Denomination	Standard masts						Capacity			
	Mast lowered height	Lift height	Total lift height	Mast extended height	Free lift	Fork carriage tilt forward/backward $\alpha/\beta$ (°)	with side-shift (t) c=600 mm			
	h1	h3	h3+s	h4	h2		Neos II 14 ac	Neos II 16 ac	Neos II 20 ac	
Triplex-FFL	mm	2.085	4.160	4.200	4.820	1.470	3 / 5	1.4	1.6	2.0
	mm	2.185	4.460	4.500	5.120	1.570	3 / 5	1.4	1.6	2.0
	mm	2.415	5.160	5.200	5.820	1.800	3 / 5	1.4	1.6	1.9
	mm	2.665	5.960	6.000	6.620	2.060	3 / 5	1.4	1.6	1.75
	mm	2.925	6.660	6.700	7.320	2.310	3 / 5	1.4	1.5	1.6
	mm	3.190	7.460	7.500	8.120	2.580	3 / 5	1.25	1.4	1.5
	mm	3.490	8.210	8.250	8.870	2.880	3 / 5	1.0	1.4	1.5
	mm	3.825	8.960	9.000	9.620	3.220	3 / 5	*	1.0	1.2
	mm	4.020	9.460	9.500	10.120	3.400	3 / 5	*	*	1.1
	mm	4.230	10.460	10.500	11.120	3.620	3 / 5	*	*	0.80

\* available on request



Accessories and special executions	
multifunctions monojoystick	all weather metal cab
flashing beacon with reverse buzzer	metal cab for cold store execution
tilting on forks holder plate "tilting forks"	cold store execution
integrated side-shift	heating system for cold store cab
battery side extraction	24V heated seat
single battery stand with wheels	wider straddle legs for larger pallets
digital lifting height indicator and pre-selector for 10 levels	adjustable spot lamps
automatic side-shift centralising	load protection guard
automatic horizontal positioning of forks	safety belt
camera on the forks with color monitor inside the cab	pin access keypad
camera on the forks holder plate with color monitor inside the cab	additional hydraulic function

standard
  option

### Masts

The masts are constructed from wrap around external section to ensure torsional and bending rigidity, and are available with the following characteristics:

- triplex with full free lift large total free lift and lifting heights available from 4.160 to 10.460 mm, and more on request;
- tilting forks holder plate (Tilting Forks);
- integrated lateral shift to avoid forward movement of the centre of gravity and maintain optimum residual capacities at all lifting heights.

### Brakes

Independent braking systems throughout the range:

- electric braking with energy recovery on reversal of direction of travel;
- electric braking with energy recovery on release of the accelerator pedal; constituting a real asset to this type of product.

- automatic parking brake with drive inhibition;
- hydraulic braking on drive wheel.
- hydraulic braking on load wheels (Neos II 16 and 20 ac only)

### Electronic system

The entire Neos II range is equipped with inverter electronic equipments with 3 different braking systems:

- releasing the accelerator pedal;
- reversing the direction of travel;
- pressing the braking pedal.

These controls monitor all the machine's functions and allow any adjustments to optimise the performance of the machine, adapting it to the type of work it has to carry out. All the parameters relating to drive, braking and hydraulic functions are electronically adjustable by the dashboard of the remote desktop directly from OMG according to the different customer needs.



### Operator's driving position

- adjustable comfort seat;
- longitudinally adjustable steering wheel;
- anti slippery operator's feet platform;
- LCD display showing the following necessary data for the manoeuvre:
  - parking brake indicator;
  - warning lights (neutral position, controller overheating, motor overheating);
  - operating hours indicator;
  - speedometer;
  - "ON" indicator for the slow traction (turtle push button);
  - different power output ways E/S/H, E=economy S=standard E=super;
  - battery charge indicator.

### Finger tip

The hydraulic functions by finger tip ensure the operator to make a precise and safe load handling.



### Battery side extraction

The battery is easily accessible by lifting the compartment door controls, standard battery side extraction on rolls facilitates its replacement for heavy applications and different working shifts.



## Head Office

Pusat Niaga Cibodas Blok E No. 12-14 A Jln. Raya Gatot Subroto Km. 3,5 Tangerang - Banten

Phone: 021-55761997, 5511825, 5512096, 5512694, 5512674

Fax: 021 - 55761998

Email: info@kharismaesanggul.com

<https://www.forkliftpdfmanuals.com/>









*We Make It Easy For You*



**SOLE DISTRIBUTOR:**



**PT KHARISMA ESA UNGGUL**  
MATERIAL HANDLING EQUIPMENT

**Head Office**

Pusat Niaga Cibodas Blok E No. 12-14 A  
Jln. Raya Gatot Subroto Km. 3,5  
Tangerang - Banten  
Phone: 021-55761997, 5511825  
5512096, 5512694, 5512674  
Fax: 021 - 55761998  
Email: info@kharismaesaunggul.com

**Branch Office**

**Cikarang :**  
Jln. Samsung 2 A blok C.5B Cikarang, Jababeka  
Bekasi - Jawa Barat 17835  
Phone : 021-29094218, 29094219  
Fax : 021-29094220

**Surabaya :**

Komplek Pergudangan Sinar Budaran II blok B No. 11  
Jln. Raya Lingkar Timur, Sidoarjo - Surabaya  
Phone :031-8946860, 8946854  
Fax : 031-8059659

**Medan :**

Kawasan Industri Mabar (KIM)  
Jln. Sumatera No.14B  
Komplek Ruko Malindo - Medan  
Phone: 061 - 6858 532, 6858 155  
Fax: 061 - 6858 463

**Semarang :**

Ruko Puri Anjasmoro Blok D2 No. 1 B  
Semarang  
Phone : 024-76670687, 76670697

**Makassar :**

Jln. Kapasa Raya  
Komplek ruko Kapasa Raya No. 7  
Depan SMUN 6 Daya - Makassar  
Rt/Rw C-05 Kel Bira Kec Tamalanrea Kota  
Kota Makassar - Sulsel  
Phone :0411-4720547, 4720057  
Hp : 0822-9383-7288