

PC

Parts Catalog

**John Deere
No. 2 and No. 4
Forklifts**

PC-1322



JOHN DEERE SERVICE PUBLICATIONS REPORT

For your convenience, three postage-paid mailing cards are provided to report an error or convey a suggestion relative to John Deere Service Publications.

Publication No. _____ Pub. Date _____ Page _____

Machine _____ Report of Error Suggestion

Name _____ Company _____

Address _____

City and State _____ Date _____



JOHN DEERE SERVICE PUBLICATIONS REPORT

Publication No. _____ Pub. Date _____ Page _____

Machine _____ Report of Error Suggestion

Name _____ Company _____

Address _____

City and State _____ Date _____

JOHN DEERE SERVICE PUBLICATIONS REPORT

Publication No. _____ Pub. Date _____ Page _____

Machine _____ Report of Error Suggestion

Name _____ Company _____

Address _____

City and State _____ Date _____

Postage
Will be Paid
by
Addressee

No
Postage Stamp
Necessary
If Mailed in the
United States

BUSINESS REPLY CARD

First-Class Permit No. 8, Moline, Illinois 61265

DEERE & CO.

John Deere Road
Moline, Illinois 61265

Service Publications Dept.



Postage
Will be Paid
by
Addressee

No
Postage Stamp
Necessary
If Mailed in the
United States

BUSINESS REPLY CARD

First-Class Permit No. 8, Moline, Illinois 61265

DEERE & CO.

John Deere Road
Moline, Illinois 61265

Service Publications Dept.



Postage
Will be Paid
by
Addressee

No
Postage Stamp
Necessary
If Mailed in the
United States

BUSINESS REPLY CARD

First-Class Permit No. 8, Moline, Illinois 61265

DEERE & CO.

John Deere Road
Moline, Illinois 61265

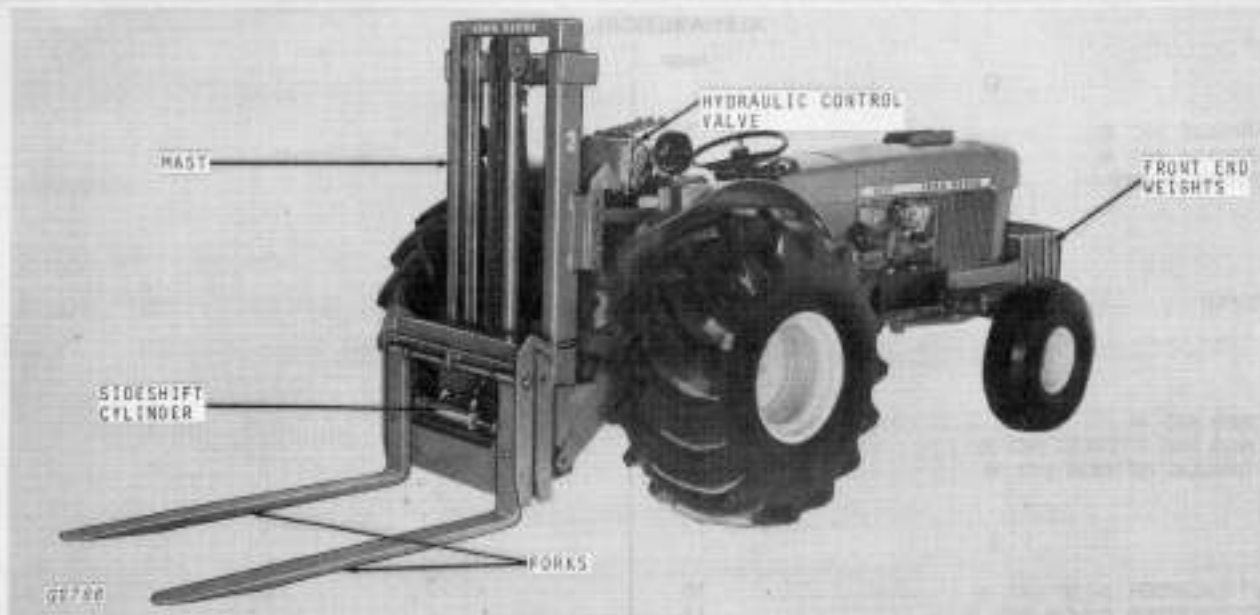
Service Publications Dept.



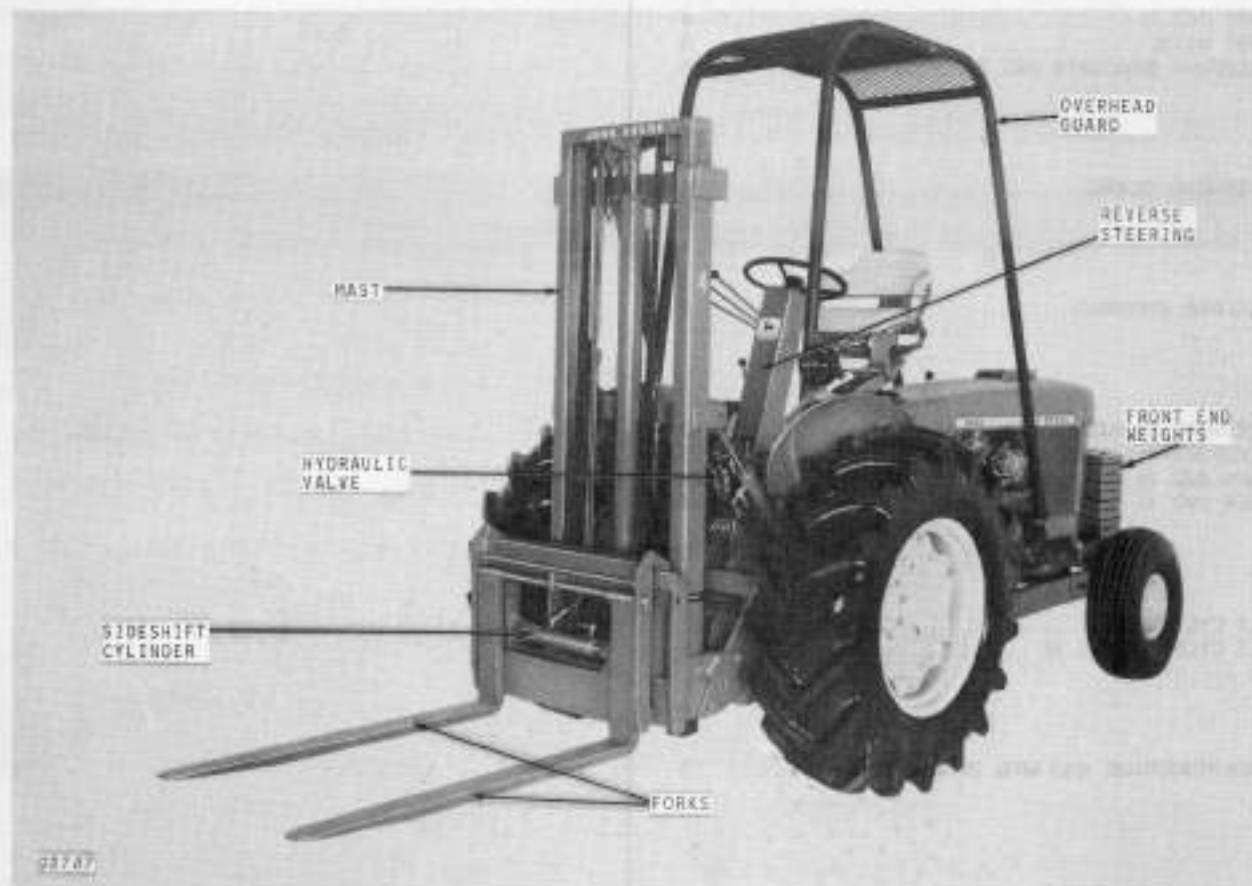
ALPHABETICAL INDEX

	PAGE
C	
CARRIAGE (NO. 2)	3
CARRIAGE (NO. 4)	4
CONTROL VALVE	18
D	
DECALS	19
H	
HOSES (NO. 4)	16
HOSES AND FITTINGS (NO. 2)	14
HYDRAULIC FITTINGS (NO. 4)	16
L	
LIFT CYLINDER, 2-1/2" (NO. 2)	10
LIFT CYLINDER, 3-INCH (NO. 4)	11
M	
MAST (NO. 4)	4
MAST (NO.2)	3
MOUNTING BRACKETS (NO. 2 FORKLIFT)	6
O	
OVERHEAD GUARD	19
R	
REVERSE STEERING	8
S	
SIDESHIFT CYLINDER	13
SIDESHIFT, 84" (2137 MM), 120" (3048 MM)	5
SLIDE (NO. 2)	3
SLIDE (NO. 4)	4
T	
TILT CYLINDER	12
TILT CYLINDER (NO. 4)	16
U	
UNDERCARRIAGE AND MTG. BRACKET (NO. 4)	7

PAGE



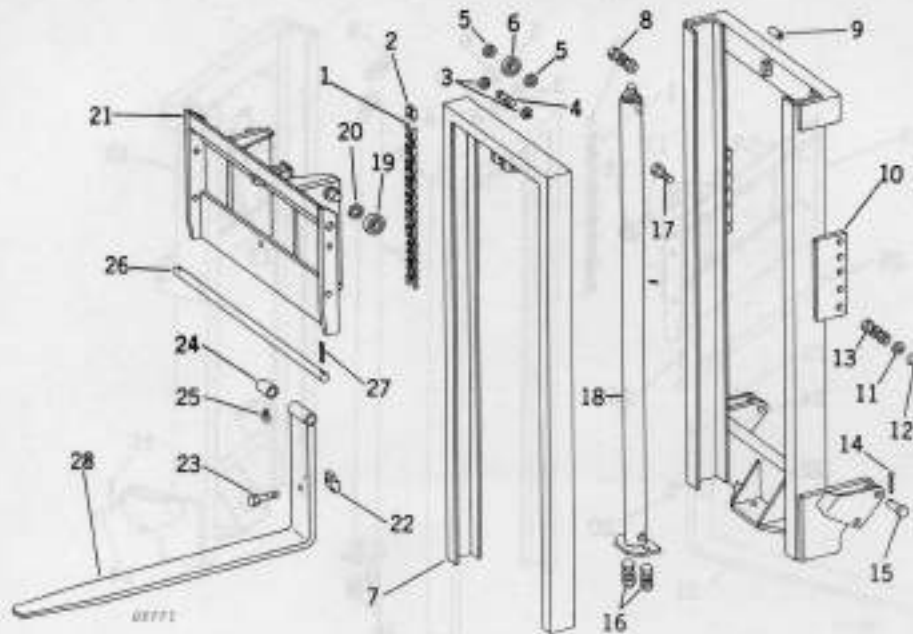
*John Deere No. 2 Forklift with Sideshift and Weight Bracket
(Manufactured 1972-1973)*



*John Deere No. 4 Forklift with 120" (3048 mm) Mast, Sideshift, Reverse Tractor Steering and Overhead Guard
(Manufactured 1972-1973)*

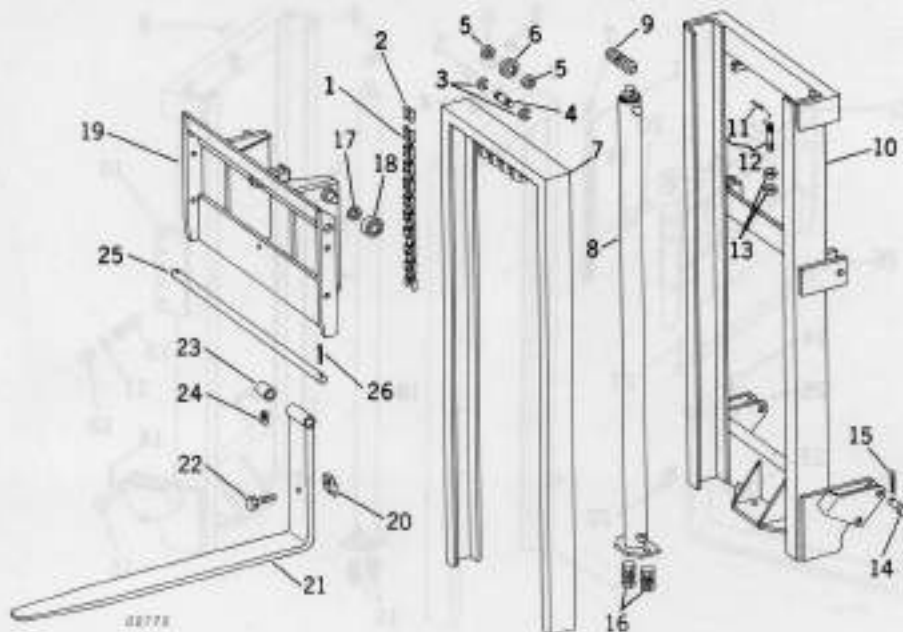
MAST, CARRIAGE, AND SLIDE
(NO. 2 FORKLIFT)

G2771



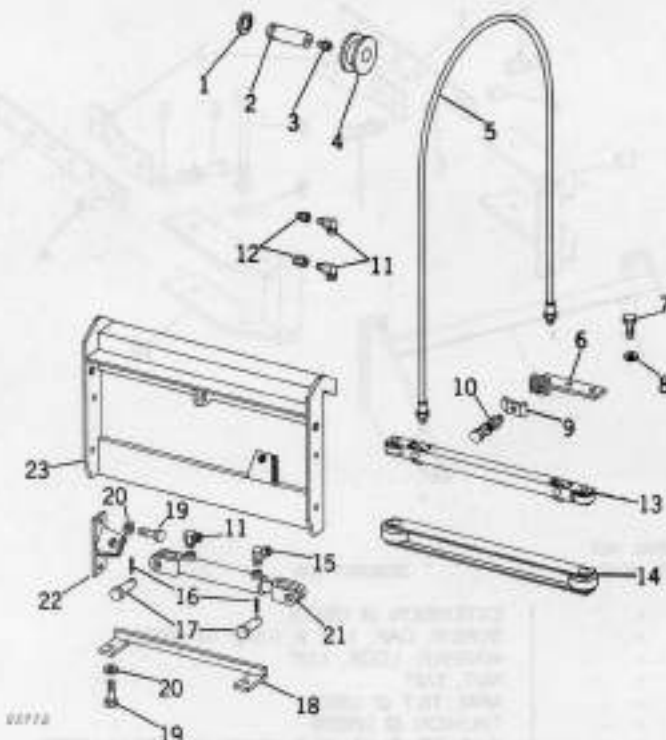
KEY	PART NO.	SERIAL NO.	DESCRIPTION
1	-	CHAIN, ROLLER, TYPE 80, 1" PITCH, 61 LINKS (USE ONE AP22461)
2	J 4216 H	-	LINK, COUPLER (2 USED)
3	L 1152 N	-	RING, SNAP, 1-3/8" (2 USED)
4	GMT188	-	PIN, IDLER, SHORT
5	GMT181	-	SPACER (2 USED)
6	GMT183	-	BEARING, IDLER, CHAIN
7	GMTT2161-1	-	SLIDE, 84" (2134 MM)
8	19H 1890	-	SCREW, CAP, 5/8" X 2-3/4"
	12H 294	-	WASHER, LOCK, 5/8"
	14H 760	-	NUT, 5/8"
9	GM10106	-	BUSHING (2 USED)
10	GMTT2107-2	-	MAST, 84" (2134 MM)
11	24H 1692	-	WASHER, 2" X 13/16" X .125" (2 USED)
12	GMTT137	-	TRUNION (2 USED)
13	19H 1862	-	SCREW, CAP, 3/4" X 2-1/2"
	12H 236	-	WASHER, LOCK, 3/4"
	14H 794	-	NUT, 3/4"
14	11H 215	-	PIN, COTTER, 1/4" X 1-1/2" (2 USED)
15	GMT937	-	PIN, CLEVIS, 1" X 2-1/4" (2 USED)
16	19H 1721	-	SCREW, CAP, 1/2" X 1-1/2" (2 USED)
	12H 301	-	WASHER, LOCK, 1/2"
	14H 809	-	NUT, 1/2"
17	19H 1768	-	SCREW, CAP, 3/4" X 2"
18	GMTT1237-5	-	CYLINDER, LIFT (SEE PAGE 10 FOR PARTS)
19	GMT245	-	ROLLER (4 USED)
20	GMT247	-	SHIM (6 USED)
21	GMTT2949	-	CARRIAGE
22	GMT261	-	CLAMP, FORK (2 USED)
23	19H 1831	-	SCREW, CAP, 1/2" X 2" (2 USED)
24	GMT263	-	CLAMP, POSITION, FORK (2 USED)
25	22H 844	-	SCREW, SET, SQ. HD., CUP POINT, 3/8" X 1/2" (2 USED)
26	GMT243	-	ROD, FORK
27	11H 249	-	PIN, COTTER, 1/4" X 1-3/4" (2 USED)
28	GMT2259	-	FORK, 46" (1168 MM) (2 USED)

**MAST, CARRIAGE, AND SLIDE
(NO. 4 FORKLIFT, 84" (2134 MM) AND 120" (3048 MM) LIFT)**



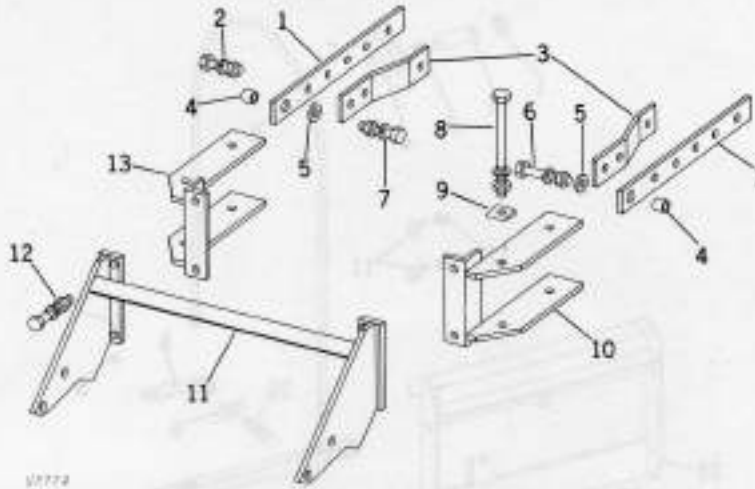
KEY	PART NO.	SERIAL NO. OR YEAR	DESCRIPTION
1	(-)	CHAIN, ROLLER, TYPE 60, 3/4" PITCH, 81 LINKS (USE ONE AP22460) (84" LIFT) (2134 MM) (2 USED)
	(-)	CHAIN, ROLLER, TYPE 60 3/4" PITCH, 105 LINKS (USE ONE AP22460) (120" LIFT) (3048 MM) (2 USED)
2	B 5235 H	-	LINKS, CONNECTOR (4 USED)
3	L 1152 N	-	RING, SNAP, 1-3/8" (4 USED)
4	GMT187	-	PIN, IDLER, CHAIN (2 USED)
5	24H 1941	-	SPACER, 1-1/4" X 1/4" (4 USED)
6	GMT183	-	BEARING, IDLER, CHAIN (2 USED)
7	GMT2158	-	SLIDE (84" LIFT) (2134 MM)
	GMT2161	-	SLIDE (120" LIFT) (3048 MM)
8	GMT1402-5	-	CYLINDER, LIFT (84" LIFT) (2134 MM) (SEE PAGE 11 FOR PARTS)
	GMT1405-5	-	CYLINDER, LIFT (120" LIFT) (3048 MM) (SEE PAGE 11 FOR PARTS)
9	19H 1974	-	SCREW, CAP, 1/2" X 2-3/4"
	12H 301	-	WASHER, LOCK, 1/2"
	14H 809	-	NUT, 1/2"
10	GMT2104-1	-	MAST (84" LIFT) (2134 MM)
	GMT2107-1	-	MAST (120" LIFT) (3048 MM)
11	GM10086	-	BUSHING, SLEEVE (4 USED)
12	GMT1199	-	BOLT, CHAIN ANCHOR WITH BUSHING (2 USED)
13	14H 793	-	NUT, JAM, 3/4" (4 USED)
14	GMT937	-	PIN, CLEVIS, 1" X 2-1/4" (2 USED)
15	11H 249	-	PIN, COTTER, 1/4" X 1-3/4" (2 USED)
16	19H 1721	-	SCREW, CAP, 1/2" X 1-1/2" (2 USED)
	12H 301	-	WASHER, LOCK, 1/2"
	14H 809	-	NUT, 1/2"
17	GMT247	-	WASHER, SHIM (4 USED)
18	GMT245	-	ROLLER (4 USED)
19	GMT2221	-	CARRIAGE
20	GMT261	-	CLAMP, FORK (2 USED)
21	GMT2259	-	FORK, 46" (1168 MM) (2 USED)
22	19H 1831	-	SCREW, CAP, 1/2" X 2" (2 USED)
23	GMT263	-	CLAMP, POSITION, FORK (2 USED)
24	22H 844	-	SCREW, SET, SQ. HD., CUP POINT, 3/8" X 1/2" (2 USED)
25	GMT243	-	ROD, FORK
26	11H 249	-	PIN, COTTER, 1/4" X 1-3/4" (2 USED)

SIDESHIFT
(84" (2134 MM) AND 120" (3048 MM) LIFT)



KEY	PART NO.	SERIAL NO. OR YEAR	DESCRIPTION
1	L 1152 N	-	RING, SNAP, 1-3/8" (2 USED)
2	GMT192	-	PIN, IDLER, CHAIN, LONG
3	JD 7763	-	FITTING, GREASE, 1/8", 45°
4	GMT195	-	ROLLER, HOSE
5	GMHP14100	-	HOSE, HYDRAULIC, 1/4" X 100" (2540 MM) (2 USED)
	GMHP1433-3	-	HOSE, HYDRAULIC, 1/4" X 33" (838 MM) (2 USED) (FOR 120" (3048 MM) LIFT ONLY)
6	GMT2349	-	ANCHOR, HOSE
7	19H 1936	-	SCREW, CAP, 3/8" X 3/4"
8	12H 304	-	WASHER, LOCK, 3/8"
9	GMT353	-	CLIP (2 USED)
10	19H 1791	-	SCREW, CAP, 1/4" X 1-1/4" (2 USED)
	12H 302	-	WASHER, LOCK, 1/4"
	14H 786	-	NUT, 1/4"
11	GM15071	-	UNION, SWIVEL, 1/4", 90° (3 USED)
12	15H 625	-	BUSHING, PIPE, 1/2" X 1/4" (2 USED)
13	GMT2301	-	ROLLER ASSEMBLY, UPPER
14	GMT2291	-	ROLLER ASSEMBLY, LOWER
15	GM15144	-	UNION, SWIVEL, 1/4", 45°
16	11H 215	-	PIN, COTTER, 1/4" X 1-1/2" (2 USED)
17	GMT937	-	PIN, CLEVIS (2 USED)
18	GMT2313	-	BRACKET, ANCHOR, CARRIAGE
19	19H 1815	-	SCREW, CAP, 1/2" X 1-1/4" (4 USED)
20	12H 301	-	WASHER, LOCK, 1/2" (4 USED)
21	GMT1445	-	CYLINDER, SIDESHIFT. (SEE PAGE 13 FOR PARTS)
22	GMT2941	-	ANCHOR, SIDESHIFT
23	GMT2943	-	CARRIAGE, SIDESHIFT

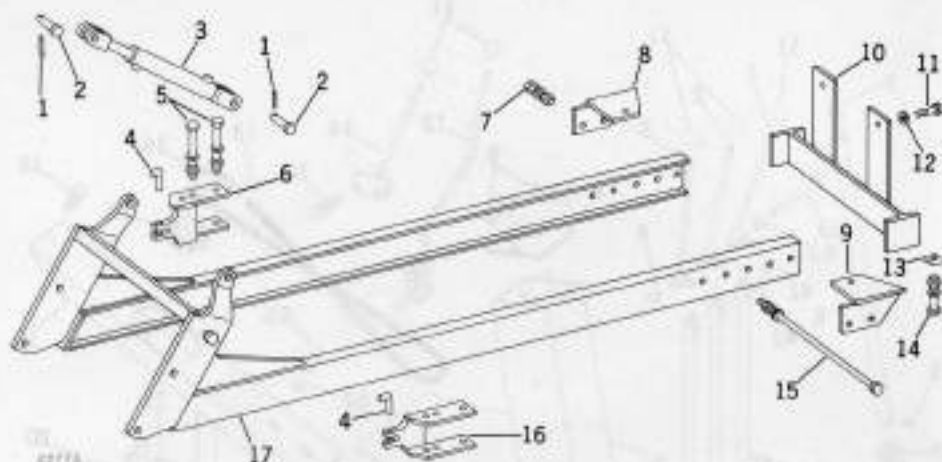
MOUNTING BRACKETS (NO. 2 FORKLIFT)



KEY	PART NO.	SERIAL NO OR YEAR	DESCRIPTION
1	GMTTA161	-	EXTENSION (2 USED)
2	19H 1721	-	SCREW, CAP, 1/2" X 1-1/2" (4 USED)
	12H 301	-	WASHER, LOCK, 1/2"
	14H 809	-	NUT, 1/2"
3	GMTTA159	-	ARM, TILT (2 USED)
4	GMTT137	-	TRUNION (2 USED)
5	24H 1692	-	WASHER, FLAT, 2" X 13/16" X .125" (2 USED)
6	19H 1862	-	SCREW, CAP, 3/4" X 2-1/2"
	12H 236	-	WASHER, LOCK, 3/4"
	14H 794	-	NUT, 3/4"
7	19H 1768	-	SCREW, CAP, 3/4" X 2"
	12H 236	-	WASHER, LOCK, 3/4"
	14H 794	-	NUT, 3/4"
8	08H 4308	-	BOLT, MACH, 3/4" X 8" (4 USED)
	12H 236	-	WASHER, LOCK, 3/4"
	14H 794	-	NUT, 3/4"
9	GMTFB259	-	WASHER, BEVEL (8 USED) (FOR LU TRACTOR MODEL ONLY)
10	GMTTA2148	-	BRACKET, AXLE, R.H.
11	GMTTA2153	-	BRACKET, EXTENSION
12	19H 1782	-	SCREW, CAP, 3/4" X 2-1/4" (4 USED)
	12H 236	-	WASHER, LOCK, 3/4"
	14H 794	-	NUT, 3/4"
13	GMTTA2147	-	BRACKET, AXLE, L.H.

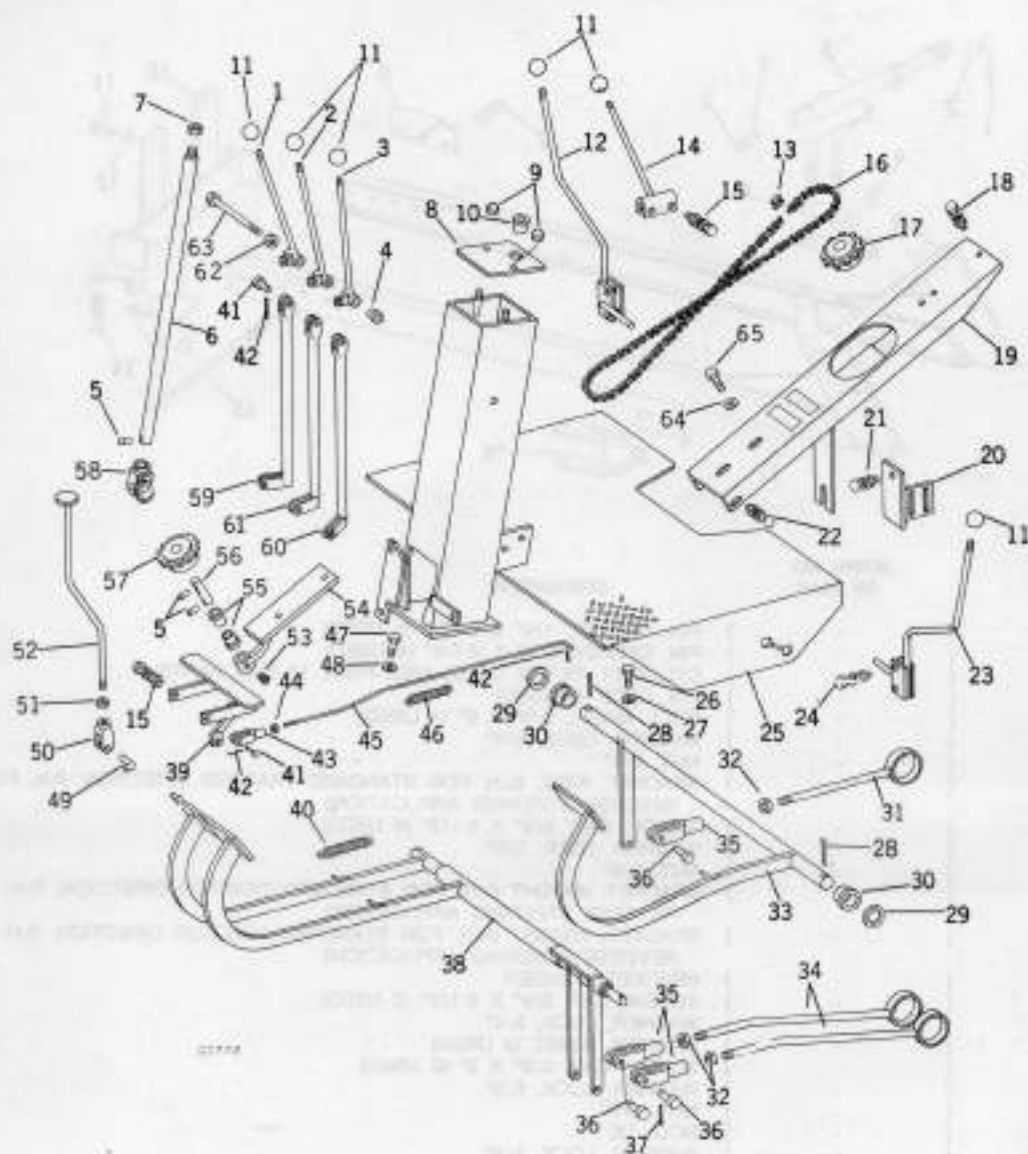
**UNDERCARRIAGE AND MOUNTING BRACKETS
(NO. 4 FORKLIFT)**

G2775



KEY	PART NO.	SERIAL NO. OR YEAR	DESCRIPTION
1	11H 215	-	PIN, COTTER, 1/4" X 1-1/2" (4 USED)
2	GMT937	-	PIN, CYLINDER, 1" X 2-1/4" (4 USED)
3	GMT1935	-	CYLINDER, TILT (2 USED) (SEE PAGE 12 FOR PARTS)
4	GMT585	-	PIN, DROP (2 USED)
5	08H 4308	-	BOLT, MACH., 3/4" X 8" (4 USED)
	12H 236	-	WASHER, LOCK, 3/4"
	14H 794	-	NUT, 3/4"
6	GMTFB2247	-	BRACKET, AXLE, (L.H. FOR STANDARD TRACTOR DIRECTION. R.H. FOR REVERSE STEERING APPLICATION)
7	19H 1756	-	SCREW, CAP, 5/8" X 1-1/2" (4 USED)
	12H 294	-	WASHER, LOCK, 5/8"
	14H 760	-	NUT, 5/8"
8	GMTFB2243	-	BRACKET, WEIGHT (L.H. FOR STANDARD TRACTOR DIRECTION. R.H. FOR REVERSE STEERING APPLICATION)
9	GMTFB2244	-	BRACKET, WEIGHT (R.H. FOR STANDARD TRACTOR DIRECTION. R.H. FOR REVERSE STEERING APPLICATION)
10	GMTFB2253	-	BRACKET, HANGER
11	19H 1862	-	SCREW, CAP, 3/4" X 2-1/2" (2 USED)
12	12H 236	-	WASHER, LOCK, 3/4"
13	GMTFB259	-	WASHER, BEVEL (2 USED)
14	19H 1863	-	SCREW, CAP, 5/8" X 3" (2 USED)
	12H 294	-	WASHER, LOCK, 5/8"
	14H 760	-	NUT, 5/8"
15	GMT581	-	ROD, TIE
	12H 294	-	WASHER, LOCK, 5/8"
	14H 760	-	NUT, 5/8"
16	GMTFB2248	-	BRACKET, AXLE, (R.H. FOR STANDARD TRACTOR DIRECTION. R.H. FOR REVERSE STEERING APPLICATION)
17	GMTFB2233	-	UNDERCARRIAGE

REVERSE STEERING



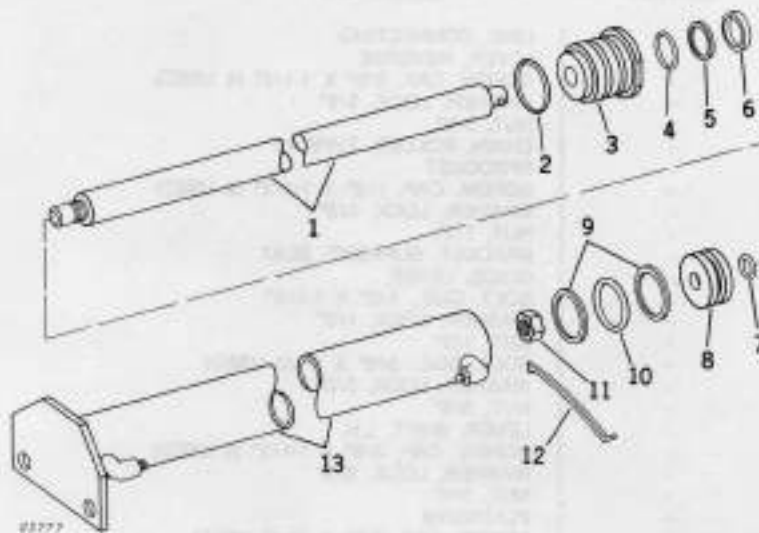
KEY	PART NO.	SERIAL NO. OR YEAR	DESCRIPTION
1	GMRSA2529-2	-	LEVER, VALVE, CONTROL, R.H.
2	GMRSA2529	-	LEVER, VALVE, CONTROL, CENTER
3	GMRSA2529-1	-	LEVER, VALVE, CONTROL, L.H.
4	GM6228	-	BUSHING (6 USED)
5	34H 316	-	PIN, SPRING, 1/4" X 1-1/2" (4 USED)
6	GMRS949	-	SHAFT, STEERING
7	14H 904	-	NUT, JAM, 3/4"
8	GMRSA489	-	CAP, MAST
9	14H 871	-	NUT, CROWN, 5/16" (2 USED)
10	GM6212	-	BUSHING
11	GM9020	-	KNOB (6 USED)
12	GMRSA2490	-	LEVER, SHIFT, R.H.

REVERSE STEERING-CONTINUED

KEY	PART NO.	SERIAL NO. OR YEAR	DESCRIPTION
13	GM10011	-	LINK, CONNECTING
14	GMRSA2525	-	LEVER, REVERSE
15	19H 1732	-	SCREW, CAP, 3/8" X 1-1/4" (4 USED)
	12H 304	-	WASHER, LOCK, 3/8"
	14H 812	-	NUT, 3/8"
16	GMRSA505	-	CHAIN, ROLLER, TYPE 43
17	GMRS185	-	SPROCKET
18	19H 1721	-	SCREW, CAP, 1/2" X 1-1/2" (2 USED)
	12H 301	-	WASHER, LOCK, 1/2"
	14H 809	-	NUT, 1/2"
19	GMRSA2471	-	BRACKET, SUPPORT, SEAT
20	GMRSA2477	-	GUIDE, LEVER
21	03H 1522	-	BOLT, CGE., 1/2" X 1-1/4"
	12H 301	-	WASHER, LOCK, 1/2"
	14H 809	-	NUT, 1/2"
22	03H 1519	-	BOLT, CGE., 3/8" X 1" (2 USED)
	12H 304	-	WASHER, LOCK, 3/8"
	14H 812	-	NUT, 3/8"
23	GMRSA2489	-	LEVER, SHIFT, L.H.
24	19H 1800	-	SCREW, CAP, 3/8" X 1-1/2" (4 USED)
	12H 304	-	WASHER, LOCK, 3/8"
	14H 812	-	NUT, 3/8"
25	GMRSA2441	-	PLATFORM
26	19H 1731	-	SCREW, CAP, 3/8" X 1" (2 USED)
27	12H 335	-	WASHER, LOCK, 3/8", INT. AND EXT. TOOTH (2 USED)
28	11H 215	-	PIN, COTTER, 1/4" X 1-1/2" (4 USED)
29	GM8042	-	WASHER, 1" X 1-1/2" (4 USED)
30	GM6215	-	BUSHING (4 USED)
31	GMRSA2499	-	ROD, CONTROL, CLUTCH
32	14H 849	-	NUT, JAM, 7/16" (3 USED)
33	GMRSA2511	-	CONTROL, CLUTCH
34	GMRSA2499-1	-	ROD, CONTROL, BRAKE (2 USED)
35	GM9004	-	CLEVIS, 7/16" (3 USED)
36	GM9014	-	PIN, CLEVIS, 7/16" (3 USED)
37	11H 234	-	PIN, COTTER, 3/32" X 1" (3 USED)
38	GMRSA2515	-	CONTROL, BRAKE
39	GMRSA2481	-	THROTTLE
40	GMTW891	-	SPRING (3 USED)
41	A 3569 R	-	PIN, CLEVIS, 1/4" (4 USED)
42	11H 231	-	PIN, COTTER, 1/16" X 1/2" (5 USED)
43	GM9001	-	CLEVIS, 1/4"
44	14H 860	-	NUT, 1/4"
45	GMRSA487	-	ROD, THROTTLE
46	GMPA413	-	SPRING
47	19H 1815	-	SCREW, CAP, 1/2" X 1-1/4" (2 USED)
48	12H 301	-	WASHER, LOCK, 1/2" (2 USED)
49	GMRSA585	-	RETAINER
50	GMRSA2495	-	YOKE, LOCK
51	14H 809	-	NUT, 1/2"
52	GMRSA2497	-	LEVER, LOCK
53	JD 7781	-	FITTING, GREASE, 1/8", 90°
54	GMRSA2501	-	BRACKET, CHAIN ADJUSTING (WITH BUSHING AND GREASE FITTING)
55	GM6211	-	BUSHING, 7/8" X 1" X 3/4" (2 USED)
56	GMRS409	-	SHAFT, SPROCKET
57	GMRS405	-	SPROCKET, LOWER
58	GMRS413	-	JOINT, UNIVERSAL
59	GMRSA2507-2	-	LINK, CONTROL, VALVE, R.H.
60	GMRSA2507-1	-	LINK, CONTROL, VALVE, L.H.
61	GMRSA2507	-	LINK, CONTROL, VALVE, CENTER
62	H 622 DN	-	NUT, LOCK, 1/2"
63	GMRSA365	-	BOLT, LEVER
64	24H 1261	-	WASHER, 9/16" X 1-1/8" X .060" (2 USED)
65	19H 1792	-	SCREW, CAP, 1/2" X 1" (2 USED)

2-1/2 INCH LIFT CYLINDER
(NO. 2 FORKLIFT)

G2777

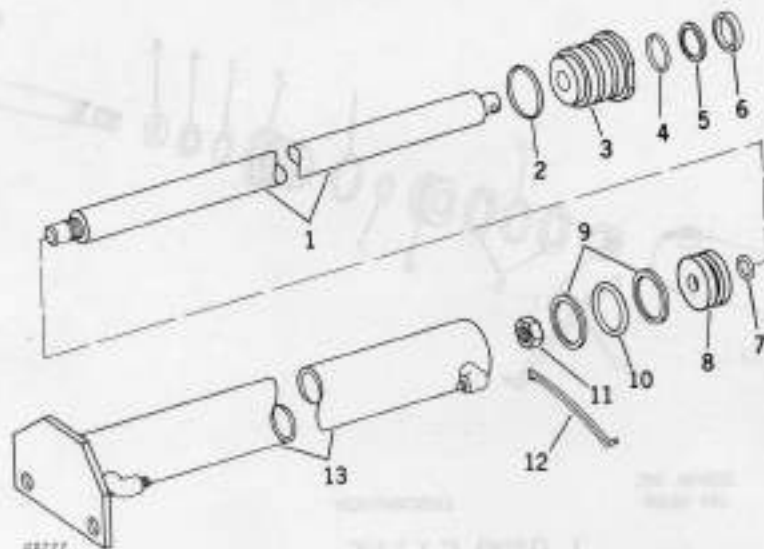


KEY	PART NO.	SERIAL NO. OR YEAR	DESCRIPTION
1	GMTT251-5	-	ROD, 1-1/2" X 84" (2134 MM)
2*	-	O-RING, 2-1/2" X 2-1/4"
3	GM13717	-	HEAD
4*	-	O-RING, 1-7/8" X 1-1/2"
5*	-	WASHER, BACK-UP, 1-7/8" X 1-1/2"
6*	-	WIPER, 1-1/2"
7*	-	O-RING, 1" X 7/8"
8	GM13716	-	PISTON
9*	-	WASHER, BACK-UP, 2-1/2" X 2-1/8" (2 USED)
10*	-	O-RING, 2-1/2" X 2-1/8"
11	GM13719	-	NUT
12*	-	WIRE, RETAINER
13	GMTT2237-5	-	CYLINDER, 2-1/2" X 84" (38 MM X 2134 MM)

* KIT LISTED BELOW CONSISTS OF ALL PARTS FOLLOWED BY AN ASTERISK:
.. GM13727 () KIT, REPAIR (2-1/2" CYLINDER)

3-INCH LIFT CYLINDER
(NO. 4 FORKLIFT)

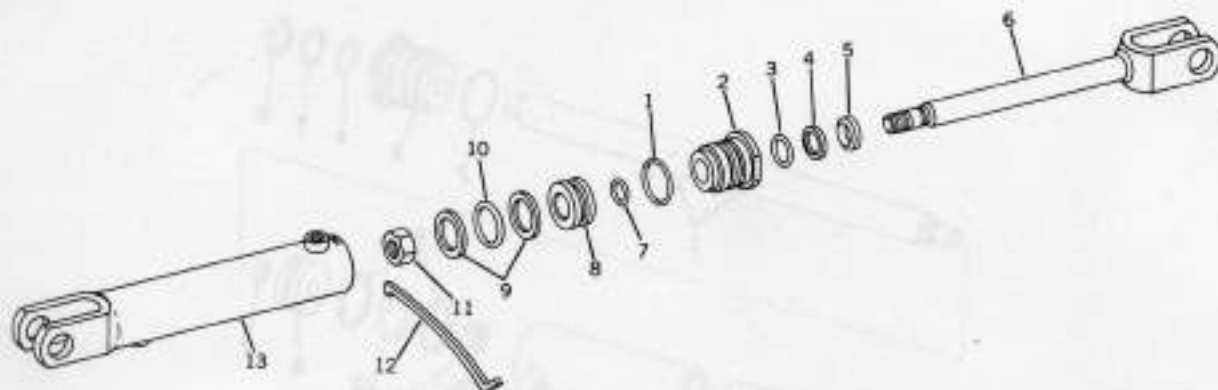
Q2777



KEY	PART NO.	SERIAL NO. OR YEAR	DESCRIPTION
1	GMT418-5 GMT421-5	-	ROD, 1-3/4" X 64" (2134 MM)
2	*	-	ROD, 1-3/4" X 120" (3048 MM)
3	GM13732	-	O-RING, 3" X 2-3/4"
4	*	-	HEAD
5	*	-	O-RING, 2-1/8" X 1-3/4"
6	*	-	WASHER, BACK-UP, 2-1/8" X 1-3/4"
7	*	-	WIPER, 1-3/4"
8	GM13731	-	O-RING, 1-1/4" X 1-1/8"
9	*	-	PISTON
10	*	-	WASHER, BACK-UP, 3" X 2-5/8" (2 USED)
11	GM13734	-	O-RING, 3" X 2-5/8"
12	*	-	NUT
13	GM2402-5 GM2405-5	-	WIRE, RETAINER
			CYLINDER, 3" X 64" (76 MM X 2134 MM)
			CYLINDER, 3" X 120" (76 MM X 3048 MM)

* KIT LISTED BELOW CONSISTS OF ALL PARTS FOLLOWED BY AN ASTERISK:
.. GM13742 () KIT, REPAIR (3" (76 MM) CYLINDER)

**TILT CYLINDER
(NO. 4 FORKLIFT)**

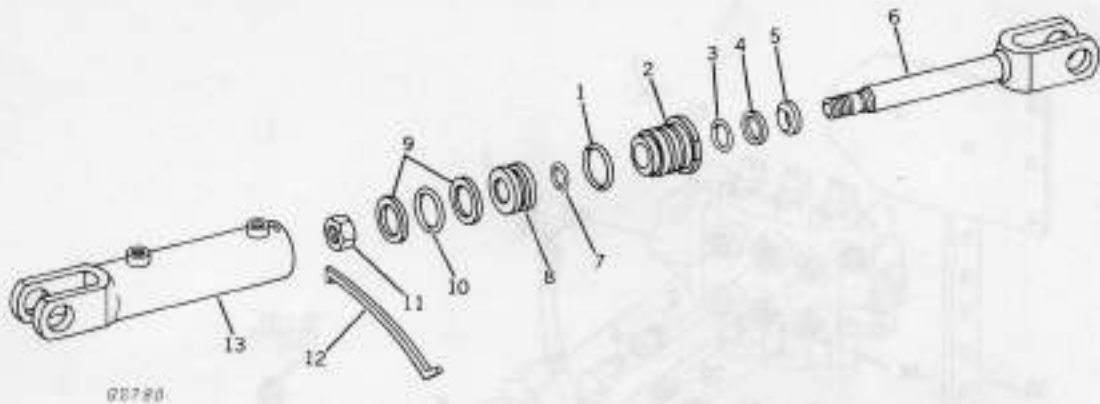


G2779

KEY	PART NO.	SERIAL NO. OR YEAR	DESCRIPTION
1*	-	O-RING, 2" X 1-3/4"
2	GM13701	-	HEAD
3*	-	O-RING, 1-1/4" X 1"
4*	-	WASHER, BACKUP, 1-1/4" X 1"
5*	-	WIPER, 1"
6	GMT2939	-	ROD, 1" X 8" (203 MM)
7*	-	O-RING, 3/4" X 5/8"
8	GM13700	-	PISTON
9*	-	WASHER, BACK-UP, 2" X 1-5/8" (2 USED)
10*	-	O-RING, 2" X 1-5/8"
11	GM13703	-	NUT
12*	-	WIRE, RETAINER
13	GMT2935	-	CYLINDER, 2" X 8" (51 MM X 203 MM)

* KIT LISTED BELOW CONSISTS OF ALL PARTS FOLLOWED BY AN ASTERISK:
 .. GM13711 () KIT, REPAIR (2" (51 MM) CYLINDER)

SIDESHIFT CYLINDER

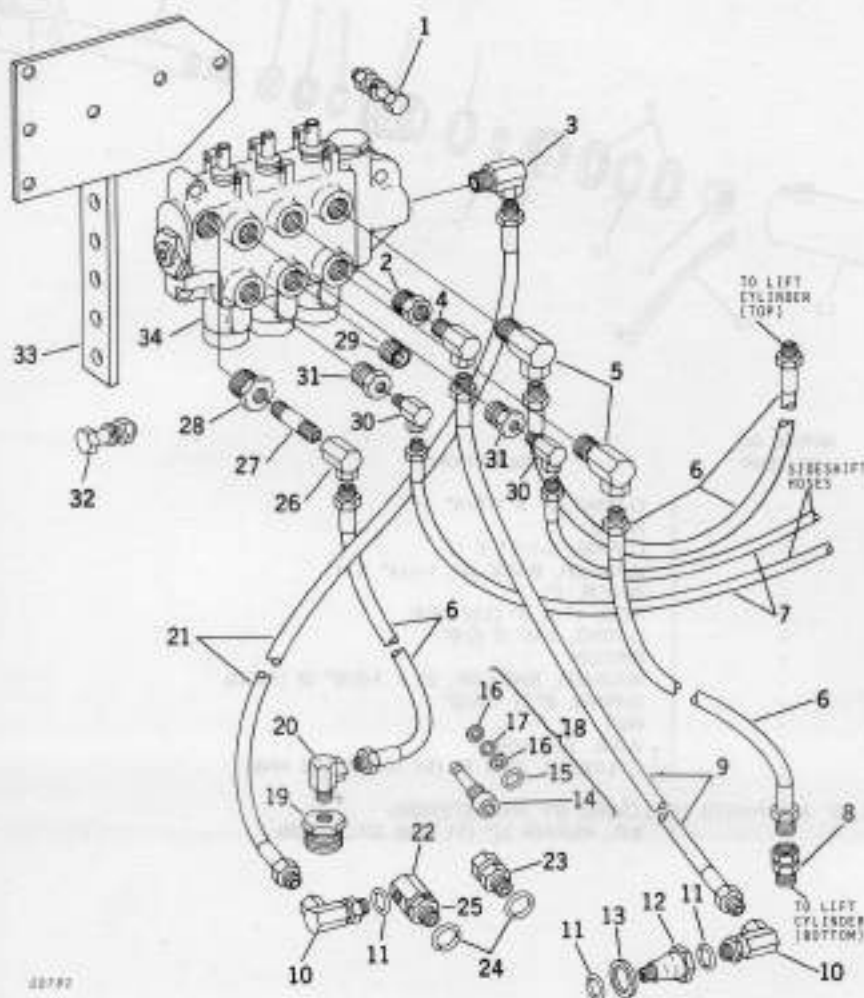


G2780

KEY	PART NO.	SERIAL NO. OR YEAR	DESCRIPTION
1	*	O-RING, 2" X 1-3/4"
2	GM13701	*	HEAD
3	*	O-RING, 1-1/4" X 1"
4	*	WASHER, BACK-UP, 1-1/4" X 1"
5	*	WIPER, 1"
6	GMT2447	*	ROD, 1" X 6" (152 MM)
7	*	O-RING, 3/4" X 5/8"
8	GM13700	*	PISTON
9	*	WASHER, BACK-UP, 2" X 1-5/8" (2 USED)
10	*	O-RING, 2" X 1-5/8"
11	GM13703	*	NUT
12	*	WIRE, RETAINER
13	GMT2445	*	CYLINDER, 2" X 6" (51 MM X 152 MM)

* KIT LISTED BELOW CONSISTS OF ALL PARTS FOLLOWED BY AN ASTERISK:
 .. GM13711 () KIT, REPAIR (2" (51 MM) CYLINDER)

**HYDRAULIC HOSES AND FITTINGS
(NO. 2 FORKLIFT WITH OR WITHOUT REVERSE STEERING)**



KEY PART NO.

SERIAL NO.
OR YEAR

DESCRIPTION

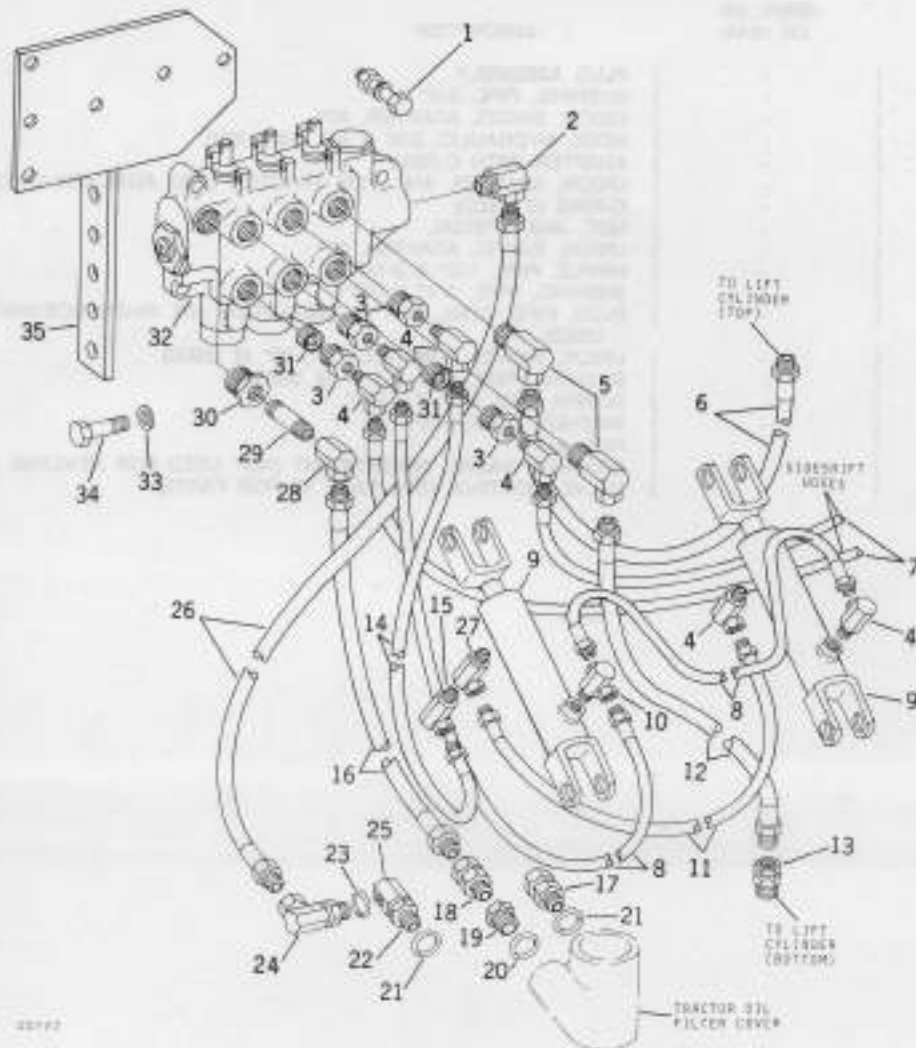
KEY	PART NO.	SERIAL NO. OR YEAR	DESCRIPTION
1	19H 1733	-	SCREW, CAP, 3/8" X 2-1/2" (3 USED)
	12H 304	-	WASHER, LOCK, 3/8"
	14H 812	-	NUT, 3/8"
2	15H 588	-	BUSHING, PIPE, 1/2" X 3/8"
3	GM15079	-	UNION, ADAPTER, 90°
4	GM15111-6	-	UNION, ADAPTER, 90° WITH 3/32" ORIFICE
5	GM15078	-	UNION, ADAPTER, 90° (2 USED)
6	AU 13987	-	HOSE, HYDRAULIC, 3/8" X 45" (1143 MM) (3 USED)
7	GMHP14100	-	HOSE, HYDRAULIC, 1/4" X 100" (2540 MM) (2 USED)
8	GM15044-7	-	UNION, SWIVEL ADAPTER (WITH 7/64" ORIFICE)
9	AU 40737	-	HOSE, HYDRAULIC, 3/8" X 54" (1372 MM)
10	GM15129	-	UNION, ADAPTER, 90° (2 USED)
11	R 26448	-	O-RING (3 USED)
12	T 21638	-	PLUG WITH HOLE
13	F 1791 R	-	WASHER, DUST
14	-	PLUG (SUB. GMITT1905)
15	R 10093	-	O-RING
16	R 36358	-	WASHER, BACK-UP (2 USED)
17	R 27490	-	O-RING

**HYDRAULIC HOSES AND FITTINGS-CONTINUED
(NO. 2 FORKLIFT WITH OR WITHOUT REVERSE STEERING)**

KEY	PART NO.	SERIAL NO. OR YEAR	DESCRIPTION
18	GM11905	-	PLUG ASSEMBLY
19	15H 576	-	BUSHING, PIPE, 3/8" X 1"
20	GM15074	-	UNION, SWIVEL ADAPTER, 90°
21	GMHP3860-3	-	HOSE, HYDRAULIC, 3/8" X 60" (1524 MM)
22	AW 16707	-	ADAPTER WITH O-RING
23	GM15054	-	UNION, ADAPTER, 3/4" (FOR TRACTOR LESS AUXILIARY OUTLET)
24	R 26375	-	O-RING (2 USED)
25	R 27448	-	NUT, JAM, SPECIAL
26	GM15101	-	UNION, SWIVEL ADAPTER, 90°
27	29H 593	-	NIPPLE, PIPE, 1/2" X 2-1/2"
28	15H 619	-	BUSHING, PIPE, 3/4" X 3/8"
29	15H 624	-	PLUG, PIPE, CTSK., 1/2" (2 USED) (FOR USE WHEN SIDESHIFT IS NOT USED)
30	GM15071	-	UNION, SWIVEL ADAPTER, 1/4", 90° (2 USED)
31	15H 625	-	BUSHING, PIPE, 1/2" X 1/4" (2 USED)
32	19H 1708	-	SCREW, CAP, 5/8" X 1-3/4"
	12H 294	-	WASHER, LOCK, 5/8"
	14H 760	-	NUT, 5/8"
33	GMT2151	-	BRACKET, VALVE, INDEPENDENT (NOT USED FOR REVERSE STEERING)
34	GM13453	-	VALVE, CONTROL (SEE PAGE 18 FOR PARTS)

HYDRAULIC HOSES, FITTINGS, AND TILT CYLINDERS
(NO. 4 FORKLIFT WITH OR WITHOUT REVERSE STEERING)

G2782

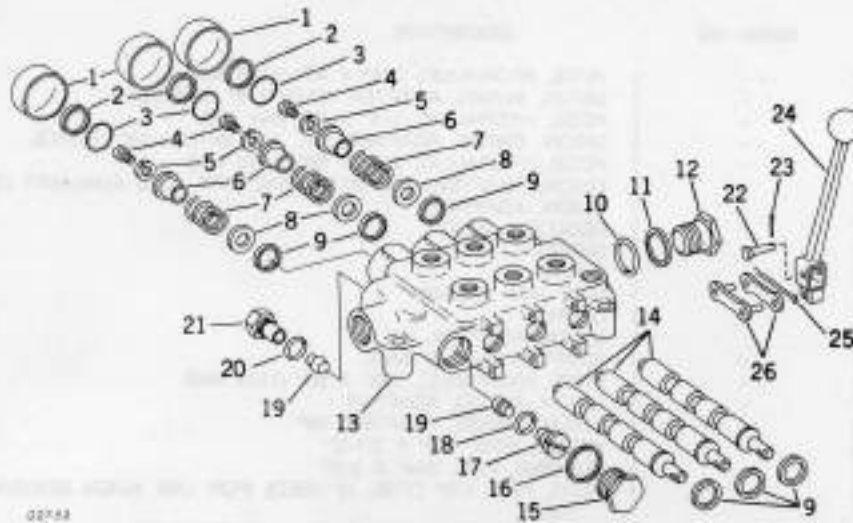


KEY	PART NO.	SERIAL NO. OR YEAR	DESCRIPTION
1	19H 1733	-	SCREW, CAP, 3/8" X 2-1/2" (3 USED)
	12H 304	-	
	14H 812	-	
2	GM15079	-	UNION, SWIVEL ADAPTER, 90° (2 USED)
3	15H 625	-	BUSHING, PIPE, 1/2" X 1/4" (2 USED)
4	GM15071	-	UNION, SWIVEL ADAPTER, 90° (2 USED)
5	GM15076	-	UNION, SWIVEL ADAPTER, 90° (2 USED)
6	AU 13987	-	HOSE, HYDRAULIC, 3/8" X 45" (1143 MM) (84" LIFT) (2134 MM)
7	AU 40737	-	HOSE, HYDRAULIC, 3/8" X 54" (1372 MM) (120" LIFT) (3048 MM)
	GMHP14100	-	HOSE, HYDRAULIC, 1/4" X 100" (2540 MM) (84" AND 120" LIFT) (2134 MM AND 3048 MM) (2 USED)
	GMHP1433-3	-	HOSE, HYDRAULIC, 1/4" X 33" (838 MM) (120" (3048 MM) LIFT) (2 USED)
8	GMHP1444	-	HOSE, HYDRAULIC, 1/4" X 44" (1118 MM) (2 USED)
9	GMT1935	-	CYLINDER, TILT (2 USED) (SEE PAGE 12 FOR PARTS)
10	GM15188	-	UNION, SWIVEL ADAPTER, 1/4" TEE
11	GMHP1446	-	HOSE, HYDRAULIC, 1/4" X 48" (1168 MM)

**HYDRAULIC HOSES, FITTINGS, AND TILT CYLINDERS-CONTINUED
(NO. 4 FORKLIFT WITH OR WITHOUT REVERSE STEERING)**

KEY	PART NO.	SERIAL NO.	DESCRIPTION
12	AU 13987	-	HOSE, HYDRAULIC, 3/8" X 45" (1143 MM)
13	GM15044-8	-	UNION, SWIVEL ADAPTER (WITH 1/8" ORIFICE)
14	GMHP1434	-	HOSE, HYDRAULIC, 1/4" X 34" (864 MM)
15	GM15110-4	-	UNION, SWIVEL ADAPTER, 90°, 1/4" WITH 1/16" ORIFICE
16	AW 10599	-	HOSE, HYDRAULIC, 3/8" X 66" (1676 MM)
17	GM15054	-	UNION, ADAPTER, 3/4" (FOR TRACTORS LESS AUXILIARY OUTLET)
18	GM15008	-	UNION, ADAPTER
19	Y 1912 C	-	REDUCER, PLUG
20	F 3171 R	-	O-RING
21	R 26375	-	O-RING
22	R 27448	-	NUT, JAM, SPECIAL
23	R 26448	-	O-RING
24	GM15129	-	UNION, ADAPTER, 90°
25	AW 16707	-	ADAPTER WITH O-RING
26	GMHP3660-3	-	HOSE, HYDRAULIC, 3/8" X 60" (1524 MM)
27	GMTFB275	-	UNION, SWIVEL ADAPTER
28	GM15101	-	UNION, SWIVEL ADAPTER, 90°
29	29H 593	-	NIPPLE, PIPE, 1/2" X 2-1/2"
30	15H 619	-	BUSHING, PIPE, 3/4" X 3/8"
31	15H 624	-	PLUG, PIPE, 1/2" CTSK. (2 USED) (FOR USE WHEN SIDESHIFT IS NOT USED)
32	GM13453	-	VALVE, CONTROL (SEE PAGE 18 FOR PARTS)
33	12H 236	-	WASHER, LOCK, 3/4"
34	19H 1871	-	SCREW, CAP, 3/4" X 1-1/4"
35	GMT2151	-	BRACKET, VALVE, INDEPENDENT (NOT USED FOR REVERSE STEERING)

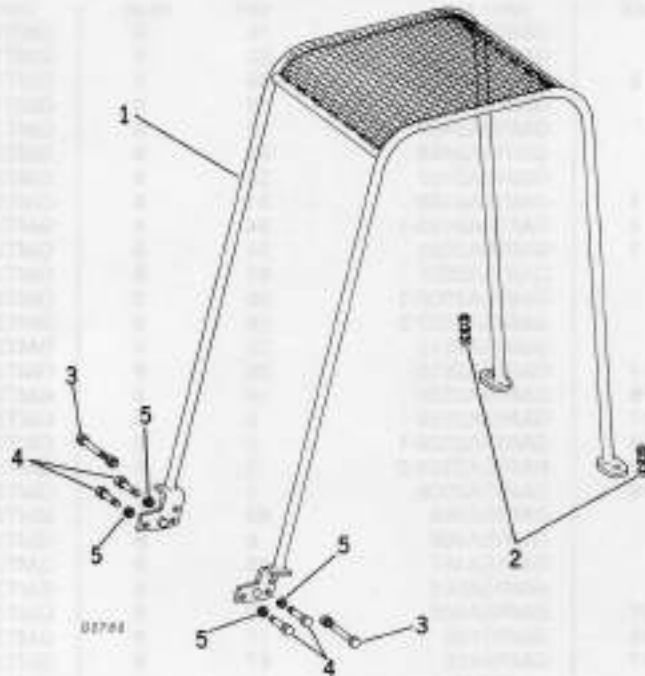
CONTROL VALVE



02744

KEY	PART NO.	SERIAL NO. OR YEAR	DESCRIPTION
1	T 10639	-	BONNET (3 USED)
2	T 10653	-	RING, RETAINER (3 USED)
3	T 10632	-	DISK (3 USED)
4	21H 1310	-	SCREW, MACH. PAN. HD. (3 USED)
5	T 10662	-	WASHER, LOCK (3 USED)
6	T 10631	-	COLLAR (3 USED)
7	T 10633	-	SPRING (3 USED)
8	T 10642	-	WASHER, STOP (3 USED)
9	T 10638	-	SEAL, SPOOL (3 USED)
10	U 30255	-	SEAL, SLEEVE
11	W 16399	-	SEAL, SLEEVE (OPTIONAL T10494 COPPER GASKET)
12	C 19645	-	PLUG, CENTER, CLOSED
13	-	HOUSING (SUB. GM13453 VALVE, COMPLETE)
14	-	SPOOL (3 USED) (SUB. GM13453 VALVE, COMPLETE)
15	U 30256	-	CAP. PLUG, RELIEF
16	T 10654	-	GASKET, RELIEF
17	W 11894	-	SEAT, PLUG, RELIEF
18	T 12047	-	O-RING, RELIEF
19	U 13616	-	POPPET, CHECK (2 USED)
20	T 12048	-	O-RING, CHECK PLUG
21	U 13613	-	PLUG, CHECK
22	U 20007	-	PIN, CLEVIS (3 USED)
23	11H 231	-	PIN, COTTER, 1/16" X 1" (3 USED)
24	U 20006	-	HANDLE, VALVE, INDEPENDENT (3 USED)
25	11H 272	-	PIN, COTTER, 1/16" X 2" (3 USED)
26	AU 30041	-	LINK, ASSEMBLY (3 USED)
..	GM13453	-	VALVE, COMPLETE

OVERHEAD GUARD



KEY	PART NO.	SERIAL NO. OR YEAR	DESCRIPTION
1	GMRSA2569	-	GUARD, OVERHEAD
2	19H 1768	-	SCREW, CAP, 3/4" X 2"
	12H 236	-	WASHER, LOCK, 3/4"
	14H 794	-	NUT, 3/4"
3	19H 2328	-	SCREW, CAP, 5/8" X 4" (2 USED)
	14H 760	-	NUT, 5/8"
4	19H 1756	-	SCREW, CAP, 5/8" X 1-1/2" (4 USED)
5	12H 294	-	WASHER, LOCK, 5/8" (4 USED)

DECALS

KEY	PART NO.	SERIAL NO. OR YEAR	DESCRIPTION
..	JD 5350	-	"JOHN DEERE", FOR TOP OF MAST FRONT
..	GM10143	-	"2", MODEL NUMBER, FOR EACH SIDE OF MAST (2 USED)
..	GM10144	-	"4", MODEL NUMBER, FOR EACH SIDE OF MAST (2 USED)
..	GM10147	-	"WARNING AND VALVE LEVERS", FOR TOP OF MAST REAR, NO. 2 FORKLIFT
..	GM10161	-	"WARNING AND VALVE LEVERS", FOR TOP OF MAST REAR, NO. 4 FORKLIFT
..	JD 5234	-	"LEAPING DEER" FOR REVERSE TRACTOR STEERING COLUMN
..	GM10160	-	"VALVE LEVERS" FOR TOP OF MAST REAR, OVER VALVE LEVER PATTERN WITHOUT REVERSE STEERING, FOR REVERSE TRACTOR STEERING.
..	GM10146	-	"GEAR SELECTION PATTERN" FOR SEAT SUPPORT BRACKET, OVER DIRECTION REVERSE PATTERN, FOR REVERSE TRACTOR STEERING.
..	U 41554	-	"GEAR SELECTION PATTERN", FOR SEAT SUPPORT BRACKET, FOR REVERSE TRACTOR STEERING
..	U 41555	-	"SHIFT PATTERN", FOR SEAT SUPPORT BRACKET, FOR REVERSE TRACTOR STEERING
..	GM10187	-	"IMPACT TEST" FOR OVERHEAD GUARD.

