

# PC

## Parts Catalog

John Deere  
27  
Forklift

PC-1107



## JOHN DEERE SERVICE PUBLICATIONS REPORT

Publication No. \_\_\_\_\_ Pub. Date \_\_\_\_\_ Page \_\_\_\_\_

Machine \_\_\_\_\_  Report of Error  Suggestion

---

---

---

---

---

---

Name \_\_\_\_\_ Company \_\_\_\_\_

Address \_\_\_\_\_

City and State \_\_\_\_\_ Date \_\_\_\_\_



## JOHN DEERE SERVICE PUBLICATIONS REPORT

Publication No. \_\_\_\_\_ Pub. Date \_\_\_\_\_ Page \_\_\_\_\_

Machine \_\_\_\_\_  Report of Error  Suggestion

---

---

---

---

---

---

Name \_\_\_\_\_ Company \_\_\_\_\_

Address \_\_\_\_\_

City and State \_\_\_\_\_ Date \_\_\_\_\_

## JOHN DEERE SERVICE PUBLICATIONS REPORT

Publication No. \_\_\_\_\_ Pub. Date \_\_\_\_\_ Page \_\_\_\_\_

Machine \_\_\_\_\_  Report of Error  Suggestion

---

---

---

---

---

---

Name \_\_\_\_\_ Company \_\_\_\_\_

Address \_\_\_\_\_

City and State \_\_\_\_\_ Date \_\_\_\_\_

For your convenience, three postage-paid mailing cards are provided to report an error or convey a suggestion relative to John Deere Service Publications.



**BUSINESS REPLY CARD**  
First-Class Permit No. 8, Moline, Illinois 61265



**DEERE & CO.**

John Deere Road  
Moline, Illinois 61265

*Service Publications Dept.*



**BUSINESS REPLY CARD**  
First-Class Permit No. 8, Moline, Illinois 61265



**DEERE & CO.**

John Deere Road  
Moline, Illinois 61265

*Service Publications Dept.*



**BUSINESS REPLY CARD**  
First-Class Permit No. 8, Moline, Illinois 61265

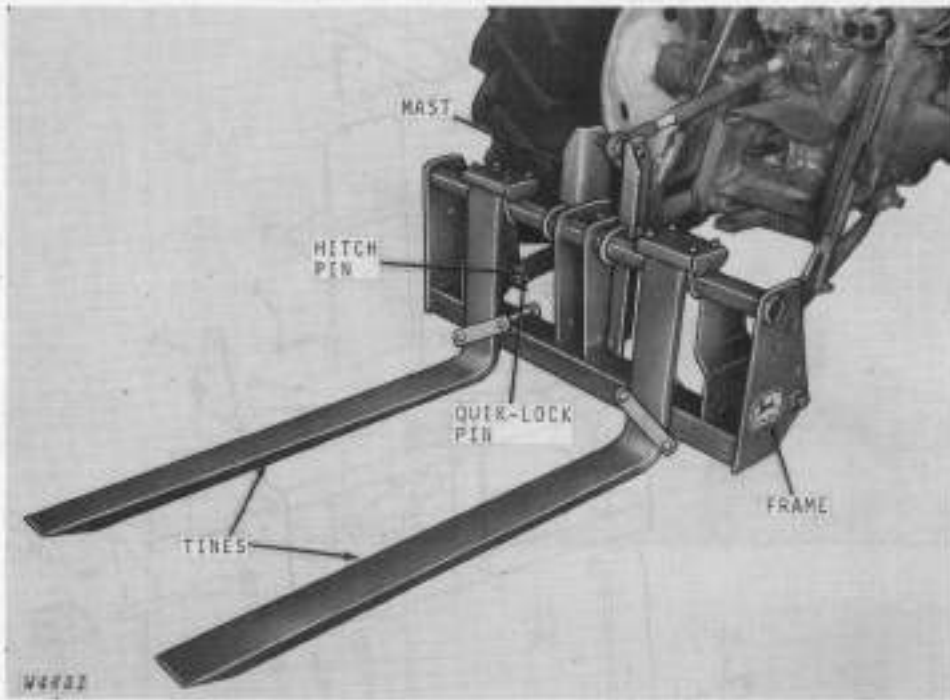


**DEERE & CO.**

John Deere Road  
Moline, Illinois 61265

*Service Publications Dept.*





*John Deere 27 Forklift Mounted on 3-Point Hitch  
Manufactured (1968- )*

**BOLT AND CAP SCREW STRENGTH IDENTIFICATION**

Bolts and cap screws required to have high-strength qualities equivalent to SAE Grade 8 are identified throughout this catalog by the description HS SAE 8. Unless identified by this description all standard bolts and cap screws are SAE Grade 5 or lower.

**CHANGE INDICATOR LINES**

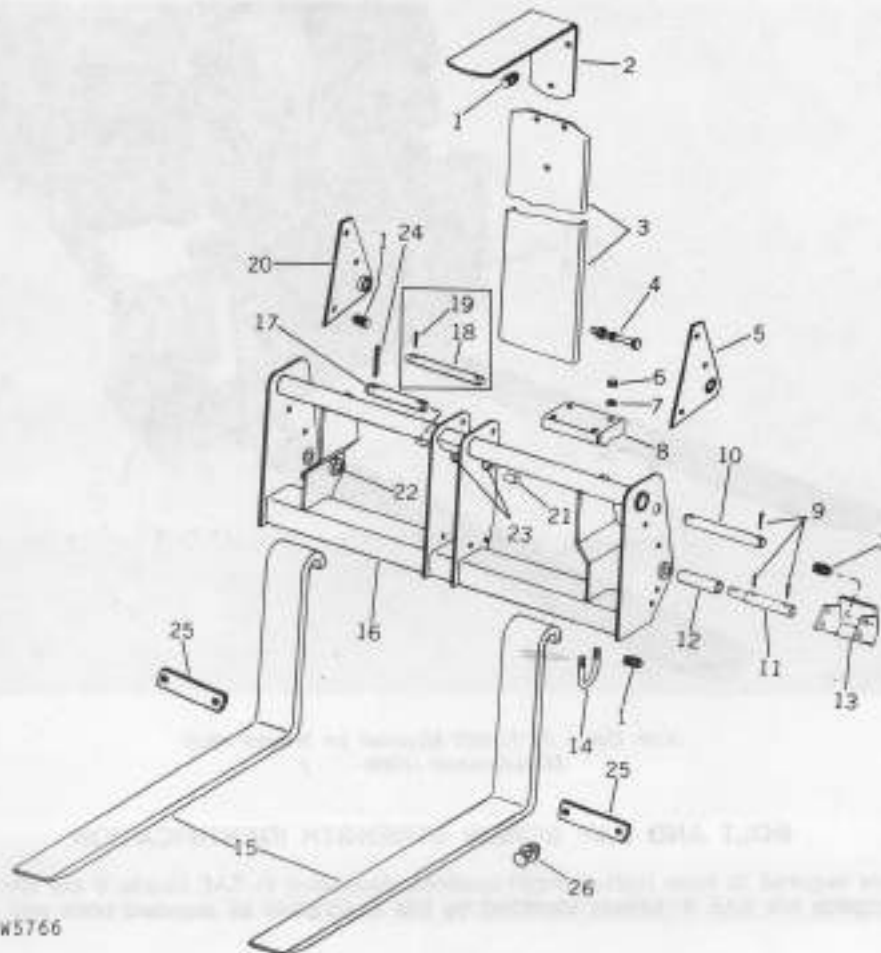
New and revised information is identified by vertical lines marked in the left-hand margin of revised pages. These lines indicate changes affecting the ordering of parts.

**SI (INTERNATIONAL SYSTEM) UNITS OF MEASURE**

Metric equivalents have been included, where applicable, throughout this parts catalog.

(Specifications and design subject to change without notice.)

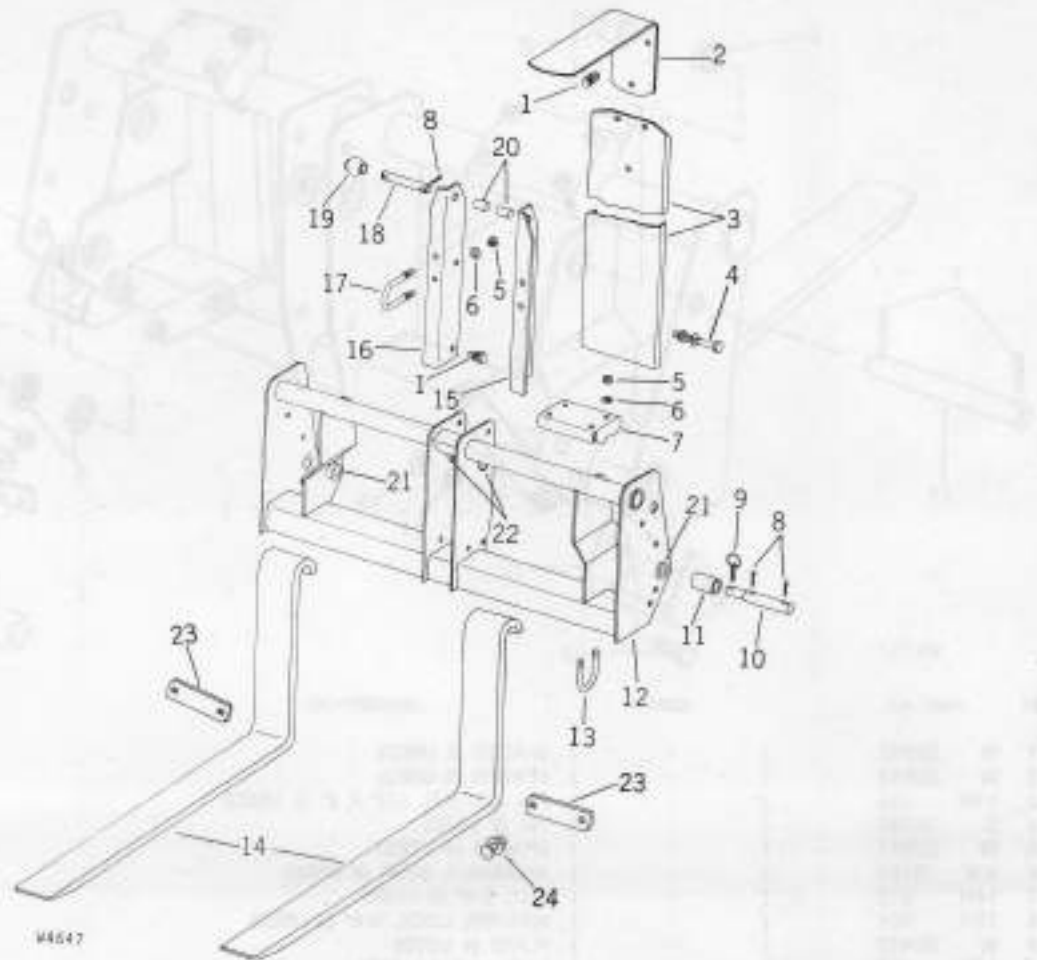
## FORKLIFT FOR LOADER OPERATION



W5766

KEY	PART NO.	YEAR	DESCRIPTION
I	1 18H 1815	( - )	SCREW, CAP, 1/2" X 1-1/4"
	14H 809	( - )	NUT, 1/2"
	12H 301	( - )	WASHER, LOCK, 1/2"
2 C 19222	( - )	EXTENSION, RIGHT ANGLE	
3 AC 15605	( - )	EXTENSION, BACK	
4	19H 1993	( - )	SCREW, CAP, 1/2" X 5-1/4"
	14H 809	( - )	NUT, 1/2"
	12H 301	( - )	WASHER, LOCK, 1/2"
5 AC 15601	( - )	PLATE, ADAPTER, LEFT (FOR USE WITH 37 LOADER)	
8 14H 812	( - )	NUT, 3/8" (8 USED)	
7 12H 304	( - )	WASHER, LOCK, 3/8" (8 USED)	
8 C 19210	( - )	RETAINER, TIRE (2 USED)	
I	9 11H 249	( - )	PIN, COTTER, 1/4" X 2" (8 USED)
	10 C 19202	( - )	PIN, 1-1/8" X 7-9/32" (2.86 CM X 20.1 CM) (FOR USE WITH 36A, 46A AND 47 LOADERS (2 USED)
11 C 19209	( - )	PIN (FOR USE WITH 48 AND 58 LOADERS) (2 USED)	
12 C 19211	( - )	BUSHING	
13 AC 15604	( - )	STOP (FOR USE WITH 36A, 46A, AND 47 LOADERS) (2 USED)	
14 C 19204	( - )	U-BOLT, TIRE RETAINER (4 USED)	
15 C 19197	( - )	TIRE, 42-INCH (106.7 CM) (2 USED)	
C 19223	( - )	TIRE, 46-INCH (116.8 CM) (2 USED)	
16 AC 15597	( - )	FRAME	
17 C 19176	( - )	PIN, PIVOT, 1-1/4" X 5-5/8" (3.16 CM X 13.29 CM) (FOR USE WITH 48 AND 58 LOADERS)	
18 C 16808	( - )	PIN, PIVOT, 1" X 7-1/16" (2.54 CM X 17.94 CM) (FOR 37 LOADER)	
19 11H 215	( - )	PIN, COTTER, 1/4" X 1-1/2" (2 USED)	
20 AC 15600	( - )	PLATE, ADAPTER, RIGHT (FOR USE WITH 37 LOADER)	
21 H 30046	( - )	SPACER (FOR USE WITH 37 LOADER) (2 USED)	
22 C 15314	( - )	BEARING, PIVOT (6 USED)	
23 C 19214	( - )	BEARING, CYLINDER (2 USED)	
24 11H 208	( - )	PIN, COTTER, 5/16" X 2-1/2" (2 USED)	
25 C 20078	( - )	CLAMP, TIRE RETAINER (4 USED)	
26	03H 2054	( - )	BOLT, CARRIAGE, 1/2" X 7" (4 USED)
	12H 301	( - )	WASHER, LOCK, 1/2" (4 USED)
	14H 809	( - )	NUT, 1/2" (4 USED)

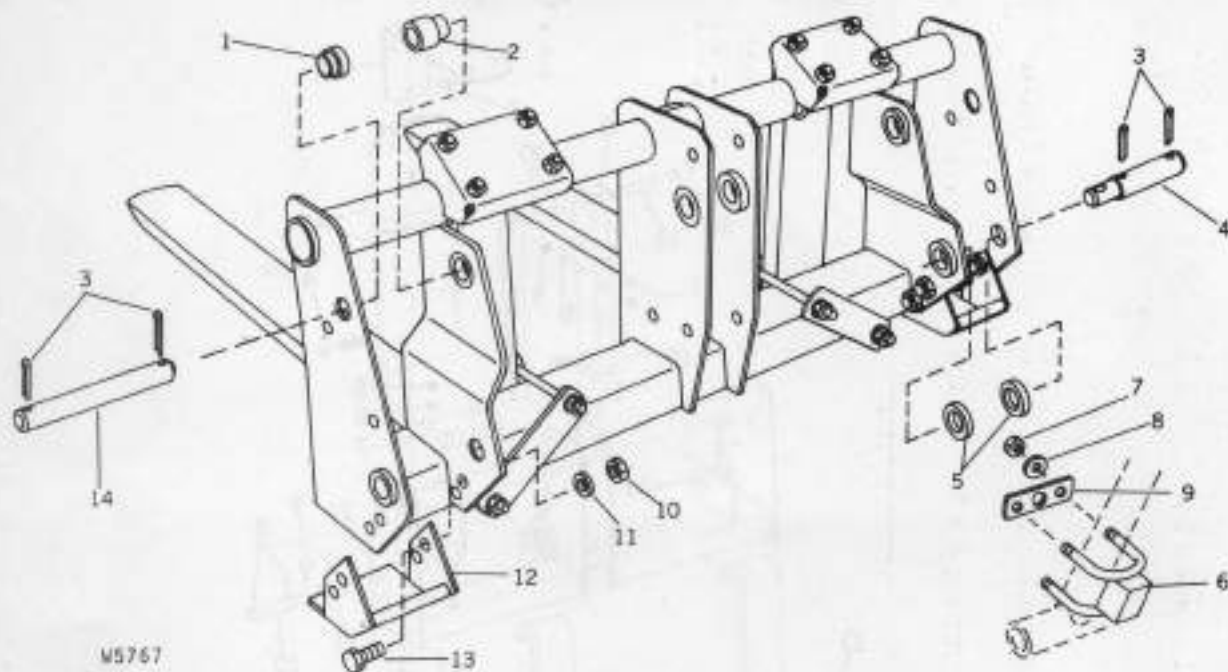
FORKLIFT FOR 3-POINT HITCH OPERATION



W4647

KEY	PART NO.	YEAR	DESCRIPTION
1	19H 1815	( - )	SCREW, CAP, 1/2" X 1-1/4" (3 OR 5 USED)
	14H 809	( - )	NUT, 1/2" (3 OR 5 USED)
	12H 301	( - )	WASHER, LOCK, 1/2" (3 OR 5 USED)
2	C 19222	( - )	BRACKET, RIGHT ANGLE
3	AC 15605	( - )	EXTENSION, BACK
4	19H 1993	( - )	SCREW, CAP, 1/2" X 5-1/4"
	14H 809	( - )	NUT, 1/2"
	12H 301	( - )	WASHER, LOCK, 1/2"
5	14H 812	( - )	NUT, 3/8" (8 USED)
6	12H 304	( - )	WASHER, LOCK, 3/8" (8 USED)
7	C 19210	( - )	RETAINER, TINE (2 USED)
8	11H 249	( - )	PIN, COTTER, 1/4" X 2" (4 USED)
9	DA 5883 A	( - )	PIN, QUIK-LOCK, 3/8" (2 USED)
10	C 19209	( - )	PIN (2 USED)
11	C 19208	( - )	SPACER (CATEGORY 2) (2 USED)
12	AC 15597	( - )	FRAME
13	C 19204	( - )	U-BOLT, TINE RETAINER (4 USED)
14	C 19197	( - )	TINE, 42-INCH (106.7 CM) (2 USED)
	C 19223	( - )	TINE, 46-INCH (116.8 CM) (2 USED)
15	C 19207	( - )	MAST, LEFT
16	C 19206	( - )	MAST, RIGHT
17	Q 31985	( - )	U-BOLT, FRAME RETAINER (2 USED)
18	C 16796	( - )	PIN, PIVOT (CATEGORY 1) 3/4" O.D. X 5-5/32" (1.9 CM X 13.1 CM)
	C 16808	( - )	PIN, PIVOT (CATEGORY 2) 1" O.D. X 7-1/16" (2.54 CM X 17.94 CM)
19	F 2681 R	( - )	BALL, IMPLEMENT MAST (CATEGORY 2)
20	C 19221	( - )	BUSHING, UPPER HITCH PIN, 1" O.D. X 1-1/4" (2.54 CM X 3.18 CM) (CATEGORY 1) (2 USED)
21	C 15314	( - )	BEARING, PIVOT (6 USED)
22	C 19214	( - )	BEARING (2 USED)
23	C 20078	( - )	CLAMP, TINE RETAINER (4 USED)
24	03H 2054	( - )	BOLT, CGE., 1/2" X 7" (4 USED)
	12H 301	( - )	WASHER, LOCK, 1/2" (4 USED)
	14H 809	( - )	NUT, 1/2" (4 USED)

## 145 LOADER ADAPTING BRACKET



M5767

KEY	PART NO.	YEAR	DESCRIPTION
1	W 22842	-	SPACER (2 USED)
2	W 22843	-	SPACER (2 USED)
3	11H 249	-	PIN, COTTER, 1/4" X 2" (8 USED)
4	C 19209	-	PIN (2 USED)
5	W 22847	-	SPACER (4 USED)
6	AW 16788	-	ASSEMBLY, STOP (2 USED)
7	14H 812	-	NUT, 3/8" (8 USED)
8	12H 304	-	WASHER, LOCK, 3/8" (8 USED)
9	W 22462	-	PLATE (4 USED)
10	14H 809	-	NUT, 1/2" (8 USED)
11	12H 301	-	WASHER, LOCK, 1/2" (8 USED)
12	AW 17012	-	STOP, FORKLIFT (2 USED)
13	19H 1815	-	SCREW, CAP, 1/2" X 1-1/4" (8 USED)
14	W 22844	-	PIN, BUCKET CYLINDER (2 USED)

## DECALS



M5768

KEY	PART NO.	YEAR	DESCRIPTION
1	AC 15620	-	KIT, DECAL

## NUMERICAL INDEX

Part No.	AC	Page	Key	Part No.	Page	Key	Part No.	Page	Key
AC	15597	2	16	W	22843	4			
AC	15597	3	12	W	22844	4			2
AC	15600	2	20	W	22847	4			14
AC	15601	2	5						5
AC	15604	2	13						
AC	15605	2	3						
AC	15605	3	3						
AC	15620	4	1						
	AW								
AW	16788	4	6						
AW	17012	4	12						
	C								
C	15314	2	22						
C	15314	3	21						
C	16796	3	18						
C	16808	2	18						
C	16808	3	18						
C	19176	2	17						
C	19197	2	15						
C	19197	3	14						
C	19202	2	10						
C	19204	2	14						
C	19204	3	13						
C	19206	3	16						
C	19207	3	15						
C	19208	3	11						
C	19209	2	11						
C	19209	3	10						
C	19209	4	4						
C	19210	2	8						
C	19210	3	7						
C	19211	2	12						
C	19214	2	23						
C	19214	3	22						
C	19221	3	20						
C	19222	2	2						
C	19222	3	2						
C	19223	2	15						
C	19223	3	14						
C	20078	2	25						
C	20078	3	23						
	DA								
DA	5683 A	3	9						
	F								
F	2681 R	3	19						
	H								
H	30046	2	21						
	Q								
Q	31985	3	17						
	W								
W	22482	4	9						
W	22842	4	1						